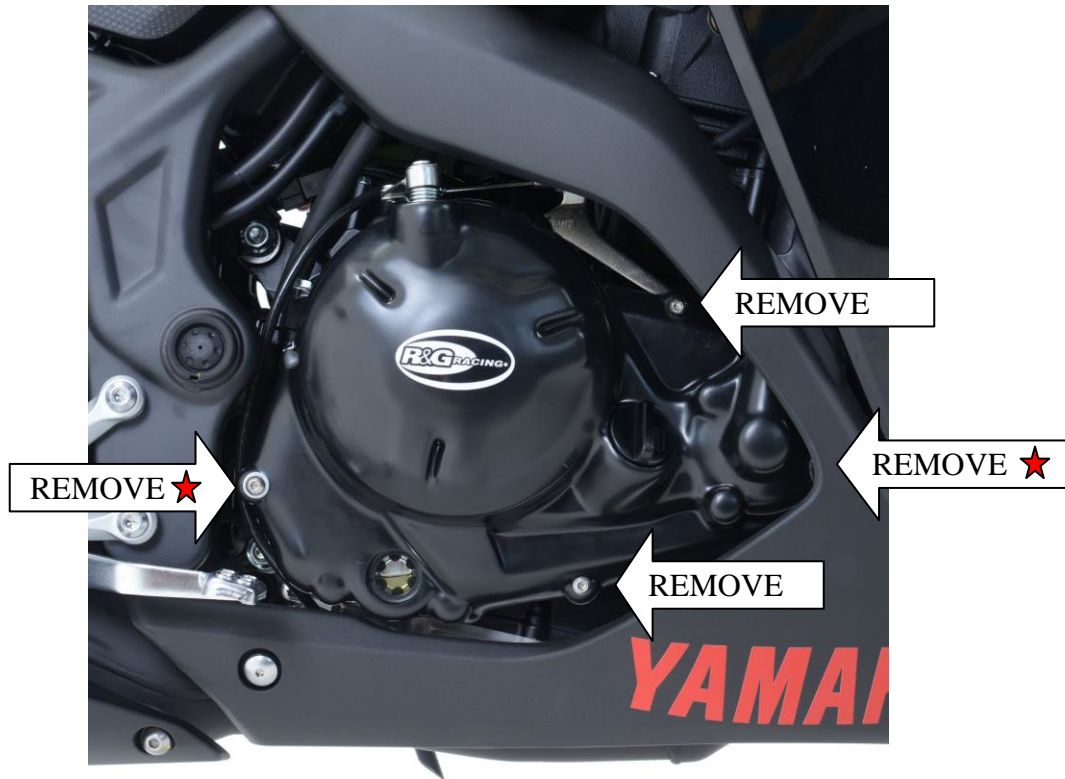




FITTING INSTRUCTIONS FOR ECC0185 RHS CLUTCH COVER
YAMAHA R25 '14- & R3 '15-



- In this kit there should be:
- 1x Engine Case Cover (ECC0185)
 - 4x M6 x 35mm Long Button Head Bolts
 - 2x M6 Washers

PLEASE READ THESE INSTRUCTIONS FULLY BEFORE STARTING



Picture 1



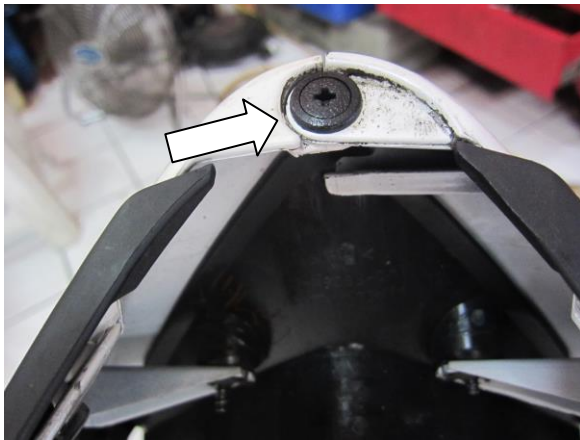
Picture 2



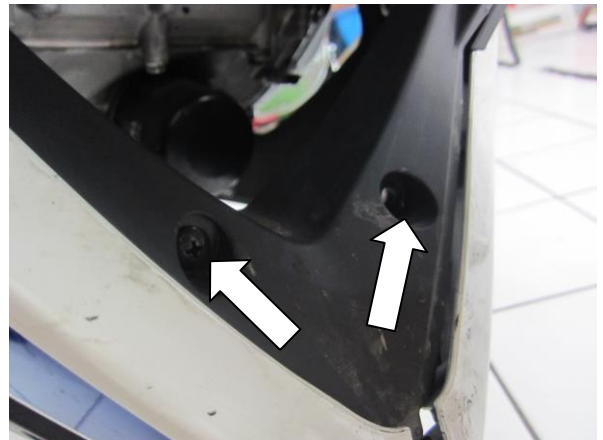
Picture 3



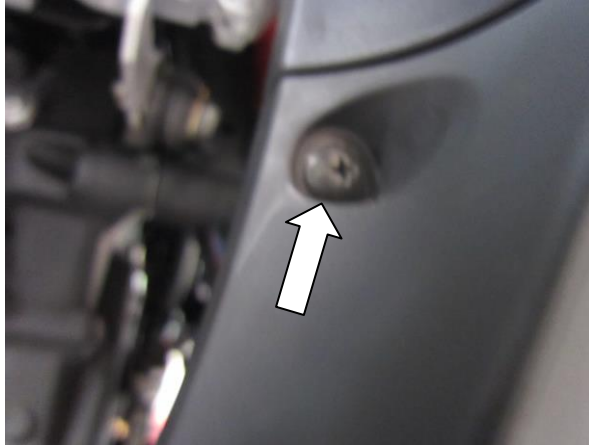
Picture 4



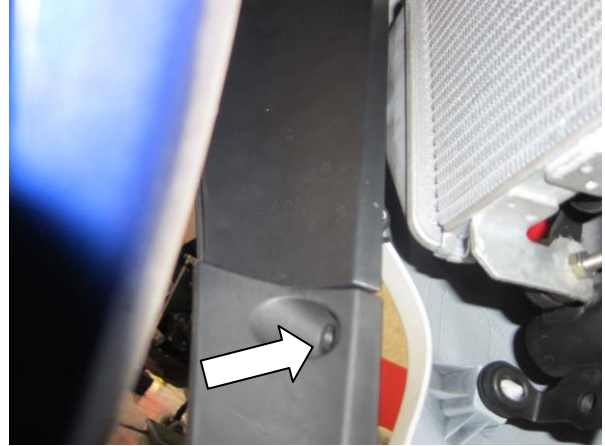
Picture 5



Picture 6



Picture 7



Picture 8



Picture 9



Picture 10



Picture 11



- Please make sure the engine is cold before proceeding with the fitting of the R&G cover.
- Remove the two bolts arrowed in pictures 1 and 2 and remove the right hand side plastic infill panel.
- Remove the two bolts arrowed in picture 3 and remove the plastic seat/frame panel.
- Remove the bolts and plastic rivets arrowed in pictures 4 through to 9 and carefully remove the right hand side fairing.
- To fit the R&G engine case cover remove the four M6 engine case bolts in the positions arrowed in picture 10. Hold the cover loosely over the case to help identify the correct ones. **DO NOT REMOVE ALL OF THE CASE BOLTS.**
- *The cable guide on the rearward bolt needs to be re-fitted between the engine case cover spacer and engine case when fitting the cover.*
- Remove the oil filler cap.
- Offer up the R&G cover to the engine and carefully fit it over the casing. Ensure that the four R&G bolts are lined up with the holes in the engine casing, and then push on as far as it will go.
- Please note the bolts marked with a star in the diagram require washers.
- Fit the bolts through the Engine Case Cover and into the engine case.
- Re-fit the oil filler cap.
- With a 4mm Allen key tighten the bolts equally so that they pull the cover into place. **DO NOT FULLY TIGHTEN.**
- Finally use a torque wrench set at 10 N/m (7 Lb/ft) to fully tighten.
- Re-fit the fairings as removed.
- It is suggested that you check the tightness of the mounting bolts on a regular basis i.e. when cleaning or once a month.
- NOTE for the cleaning of this product you should only use a soft polishing cloth and a mild general cleaning agent.
- **AVOID HARMFUL CHEMICALS. IF IN DOUBT DO NOT USE AS THEY COULD ALTER THE STRENGTH OF THE COVER.**
- R&G will accept no liability if the above procedure and torque settings are not followed.

ISSUE 1 29/05/2015 (AR)

CONSUMER NOTICE

The catalogue description and any exhibition of samples are only broad indications of the Products and R&G may make design changes which do not diminish their performance or visual appeal and supplying them in such state shall conform to the order. The Buyer acknowledges no representation or warranty (other than as to title) has been given or will apply to the Products other than those in R&G's order or confirmation and the Buyer confirms it has chosen the Products as being of merchantable quality and suitable for its particular purposes. Where R&G fits the Products or undertakes other services it shall exercise reasonable skill and care and rectify any fault free of charge unless the workmanship has been disturbed. The Buyer is responsible for ensuring that the warranty on the motorcycle is not affected by the fitting of the Products. On return of any defective Products R&G shall at its option either supply a replacement or refund the purchase money but shall not be liable if the Products have been modified or used or maintained otherwise than in accordance with R&G's or manufacturer's instructions and good engineering practice or if the defect arises from accident or neglect. Other than identified above and subject to R&G not limiting its liability for causing death and personal injury, it shall not be liable for indirect or consequential loss and otherwise its liability shall be limited to the amounts paid by the Buyer for the Products or the fitting or service concerned. These terms do not affect the Buyer's statutory rights.

R&G RACING RETURNS POLICY (NON-FAULTY GOODS)

Returns must be pre-authorized (if not pre-authorized the return will be rejected). Goods may only be returned direct to us if they were purchased direct from us (customer must prove if necessary). Otherwise to be returned to original vendor. Goods must be in re-sellable condition, in the opinion of R&G Racing. All returns are subject to a 25% restocking and handling fee (25% of the gross value exc. P&P – at the prevailing price at time of purchase). The customer must pay any and all carriage charges. No returns of discontinued products, unless within 14 days of purchase. This policy does not affect your statutory rights and does not refer to faulty goods.

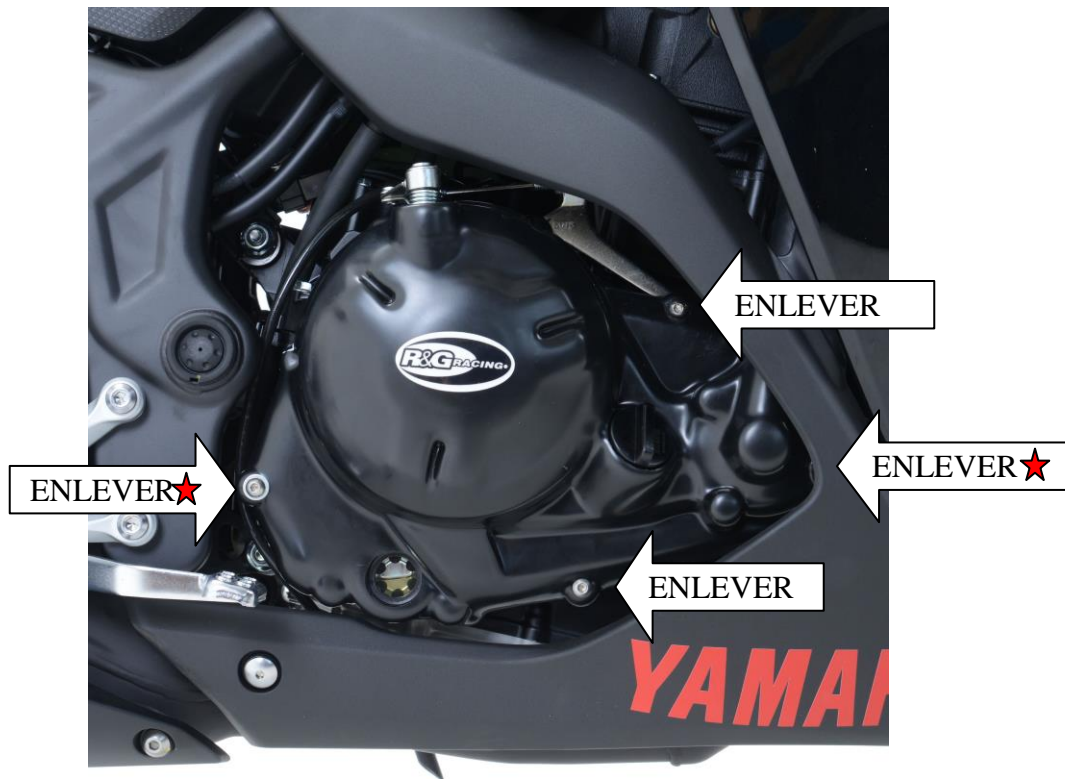
R&G Racing

Unit 1, Shelley's Lane, East Worldham, Alton, Hampshire, GU34 3AQ

Tel: +44 (0)1420 89007 Fax: +44 (0)1420 87301 www.rg-racing.com Email: info@rg-racing.com



Instructions de montage pour ECC0185 Carter Moteur coté droit
YAMAHA R25 '14- & R3 '15-



Le kit doit contenir :

- 1 x Protection carter moteur (ECC0185)
- 4x M6 x 35mm Boulons
- 2x M6 Rondelles

Bien lire ces instructions avant de procéder au montage:



Photo 1



Photo 2



Photo 3



Photo 4

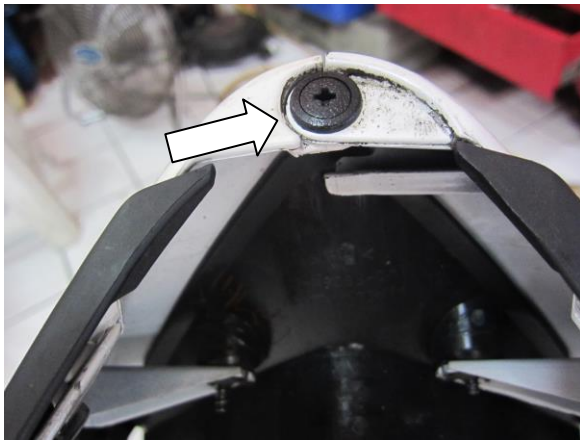


Photo 5

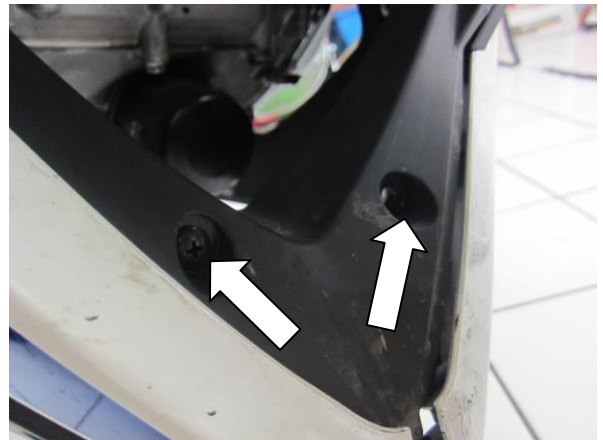


Photo 6

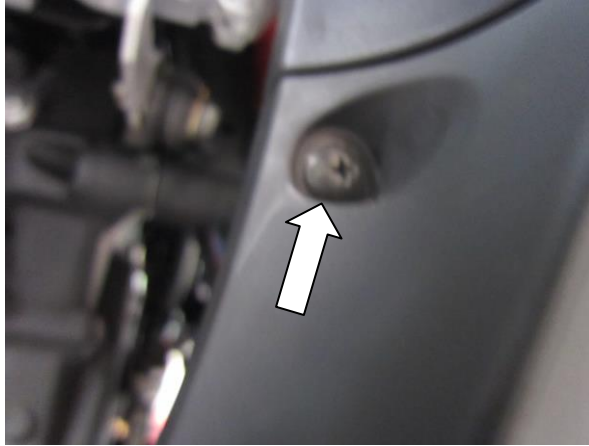


Photo 7

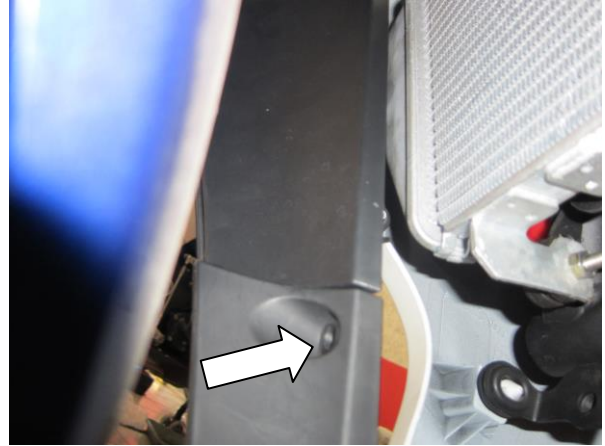


Photo 8



Photo 9



Photo 10

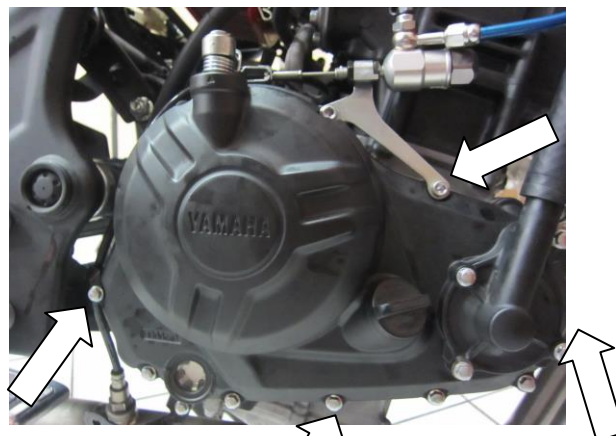


Photo 11



- Assurez-vous que le moteur soit froid..
- Enlever les 2 boulons indiqués sur les photos 1 et 2 puis enlever le cache du coté droit.
- Enlever les 2 boulons indiqués sur la photo 3 puis enlever le siège plastic/cache cadre.
- Enlever les boulons et rivets indiqués sur les photos 4 à 9 puis enlever délicatement le carénage coté droit.
- Pour monter la protection carter moteur R&G, enlever les 4 boulons M6 dans les positions indiquées sur la photo 10. Tenir le couvercle autour du carter pour aider à identifier les bons trous. NE PAS ENLEVER TOUS LES BOULONS DE CARTER.
- *Le guide de câble sur le boulon arrière doit être remis entre l'entretoise de la protection carter moteur et le carter moteur, lors de l'installation du cache.*
- Enlever le bouchon du réservoir d'huile.
- Mettre la protection R&G en place sur le carter moteur. S'assurer que les 4 boulons R&G soient alignés avec les trous, puis, une fois cela vérifié, pousser la protection jusqu'à la limite.
- Notez que les boulons marqués d'une étoile sur le schéma requièrent une rondelle.
- Passer les boulons à travers la protection carter moteur puis dans le carter moteur.
- Remettre le bouchon du réservoir d'huile.
- Serrer les boulons avec une clé Allen de 4mm, pour qu'ils placent la protection en place. NE PAS SERRER COMPLETEMENT.
- Utiliser une clé dynamométrique à 10 Nm (7 Lb ft) pour bloquer).
- Remettre les carénages comme à l'origine.
- Nous vous suggérons de vérifier le serrage au moins une fois par mois, lors du nettoyage par exemple.
- NOTE: Pour le nettoyage, vous devriez utiliser uniquement un chiffon doux et un agent nettoyant doux.
- Ne pas utiliser d'agents chimiques qui pourraient altérer l'efficacité de la protection.
- R&G n'acceptera aucune responsabilité en cas de mauvais couple de serrage ou d'utilisation inappropriée d'agents nocifs.

ISSUE 1 29/05/2015 (AR)

CONSUMER NOTICE

The catalogue description and any exhibition of samples are only broad indications of the Products and R&G may make design changes which do not diminish their performance or visual appeal and supplying them in such state shall conform to the order. The Buyer acknowledges no representation or warranty (other than as to title) has been given or will apply to the Products other than those in R&G's order or confirmation and the Buyer confirms it has chosen the Products as being of merchantable quality and suitable for its particular purposes. Where R&G fits the Products or undertakes other services it shall exercise reasonable skill and care and rectify any fault free of charge unless the workmanship has been disturbed. The Buyer is responsible for ensuring that the warranty on the motorcycle is not affected by the fitting of the Products. On return of any defective Products R&G shall at its option either supply a replacement or refund the purchase money but shall not be liable if the Products have been modified or used or maintained otherwise than in accordance with R&G's or manufacturer's instructions and good engineering practice or if the defect arises from accident or neglect. Other than identified above and subject to R&G not limiting its liability for causing death and personal injury, it shall not be liable for indirect or consequential loss and otherwise its liability shall be limited to the amounts paid by the Buyer for the Products or the fitting or service concerned. These terms do not affect the Buyer's statutory rights.

R&G RACING RETURNS POLICY (NON-FAULTY GOODS)

Returns must be pre-authorized (if not pre-authorized the return will be rejected). Goods may only be returned direct to us if they were purchased direct from us (customer must prove if necessary). Otherwise to be returned to original vendor. Goods must be in re-sellable condition, in the opinion of R&G Racing. All returns are subject to a 25% restocking and handling fee (25% of the gross value exc. P&P – at the prevailing price at time of purchase). The customer must pay any and all carriage charges. No returns of discontinued products, unless within 14 days of purchase. This policy does not affect your statutory rights and does not refer to faulty goods.

R&G Racing
Unit 1, Shelley's Lane, East Worldham, Alton, Hampshire, GU34 3AQ
Tel: +44 (0)1420 89007 Fax: +44 (0)1420 87301 www.rg-racing.com Email: info@rg-racing.com