



FITTING INSTRUCTIONS FOR CP0331BL AERO CRASH PROTECTORS
SUZUKI INAZUMA 250 2012

Page | 1



PICTURE 'A'



PICTURE 'B'



REAR OF BIKE

FRONT OF BIKE

PICTURE 'C'

THIS KIT CONTAINS THE ITEMS PICTURED AND LABELLED BELOW.
DO NOT PROCEED UNTIL YOU ARE SURE ALL PARTS ARE PRESENT.

Please note that the way the kit is packed does not necessarily represent the way of mounting to the bike

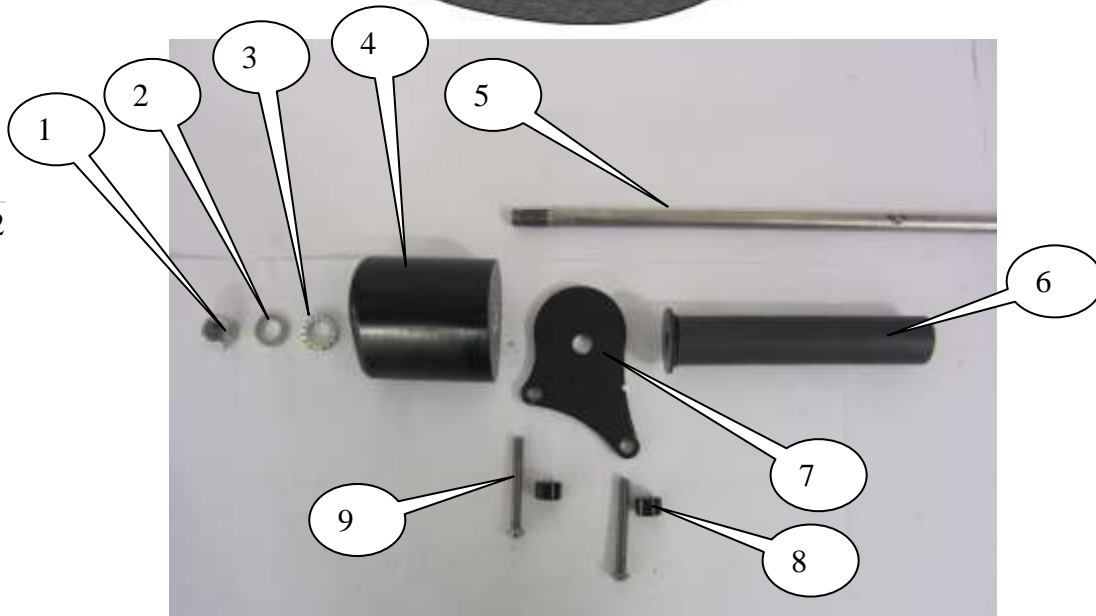
Please note that in cases where kits are packed with rubber washers holding the components onto the bolt – *the rubber washers should be thrown away!*

THE PARTS SHOWN MAY BE REPRESENTATIVE ONLY (FOR CLARITY OF INSTRUCTIONS ONLY)

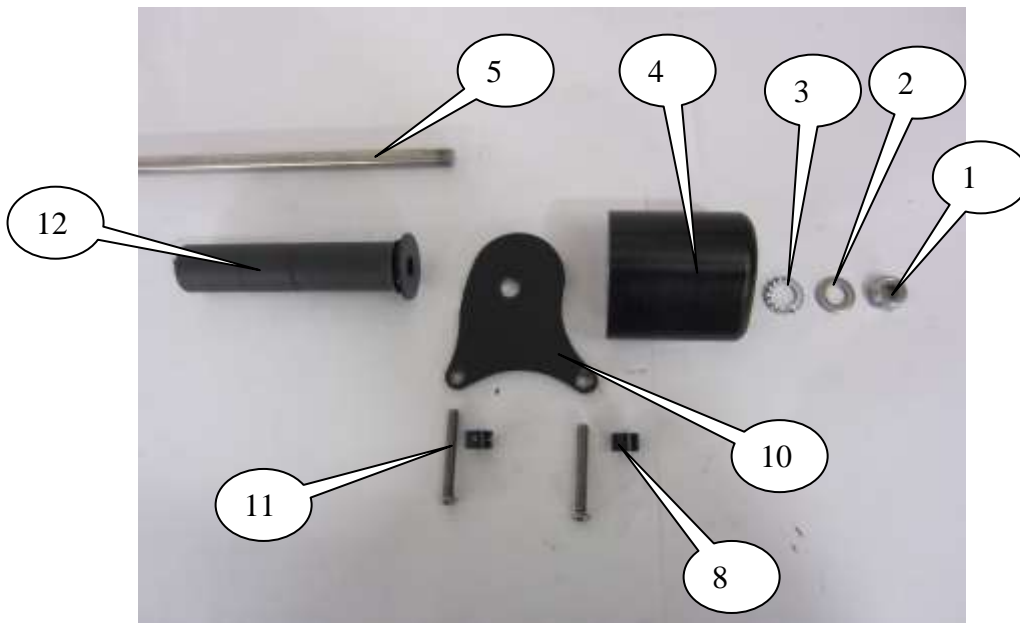
R&G Racing

Unit 1 Shelleys Lane, East Worldham, Alton, Hants GU34 3AQ

Tel: +44 (0)1420 89007 Fax: +44 (0)1420 87301 www.rg-racing.com Email: info@rg-racing.com



LEFT HAND SIDE



RIGHT HAND SIDE

TOOLS REQUIRED

- Socket set to include 8, 2x14 and 2x17mm socket and wrench.
 - Set of Allen keys set to include 4mm A/F.
 - Torque wrench (up to 40Nm).

R&G Racing

Unit 1 Shelleys Lane, East Worldham, Alton, Hants GU34 3AQ
Tel: +44 (0)1420 89007 Fax: +44 (0)1420 87301 www.rg-racing.com Email: info@rg-racing.com



LEGEND

- ITEM 1 = M10 NYLOC NUTS (x2).
- ITEM 2 = M10 PLAIN WASHERS (x2).
- ITEM 3 = LW0001 (M12 SHAKE PROOF WASHERS) (x2).
- ITEM 4 = B0061 with CS341 (10mm) (BOTH CRASH PROTECTORS) (x2).
- ITEM 5 = EB070 ENGINE BAR (440mm LONG) (x1).
- ITEM 6 = S0601 L-H-S SPACER (138mm LONG) (x1).
- ITEM 7 = PLATE0037 SUPPORT PLATE L-H-S (x1).
- ITEM 8 = S0600 L&R-H-S SUPPORT PLATE SPACERS (9mm LONG) (x4).
- ITEM 9 = M6x50mm LONG BUTTON HEAD BOLTS L-H-S (x2).
- ITEM 10 = PLATE0038 SUPPORT PLATE R-H-S (x1).
- ITEM 11 = M6x45mm LONG BUTTON HEAD BOLTS R-H-S (x2).
- ITEM 12 = S0602 R-H-S SPACER (123mm LONG) (x1).
- ITEM 13 = BC0002 CRASH PROTECTOR CAPS (x2) (NOT SHOWN).



PICTURE 1



PICTURE 2



PICTURE 3



PICTURE 4

R&G Racing



FITTING INSTRUCTIONS

Page | 4

Near side (left side as you sit on bike)

- Remove the two bolts arrowed in picture 1.
- Remove the nut in position arrowed in picture 2.
- Use the new engine bar (item 5) to push the original bolt out leave the same amounts protruding from either side.
- Place the longer spacer (item 6) over the engine bar on the left hand side with the larger diameter furthest away from the mounting bracket.
- Place the left hand side support plate (item 7) over the engine bar so it sits against the spacer.
- Place the two longer button headed bolts (item 9) through the two smaller holes in the support bracket as shown in picture 1.
- Place one of the support plate spacers (item 8) over the exposed end of each bolt as shown in picture 2 and tighten both bolts.
- Place one of the crash protectors (item 4) onto the exposed end of the engine bar.
- Place one of the shake proof washers (item 3) onto the exposed end of the engine bar and into the counter-bore of the crash protector.
- Place one of the M10 washers (item 2) and nut (item 1) onto the end of the engine bar (please ensure the nut is fully engaged).

Off side (right side as you sit on bike)

- Remove the two bolts arrowed in picture 3.
- Place the shorter spacer (item 12) over the engine bar on the right hand side with the larger diameter furthest away from the mounting bracket.
- Place the right hand side support plate (item 10) over the engine bar so it sits against the spacer.
- Place the two shorter button headed bolts (item 11) through the two smaller holes in the support bracket as shown in picture 3.
- Place one of the support plate spacers (item 8) over the exposed end of each bolt as shown in picture 4 and tighten both bolts.
- Place the remaining crash protector (item 4) onto the exposed end of the engine bar.
- Place the remaining shake proof washer (item 3) onto the exposed end of the engine bar and into the counter-bore of the crash protector.
- Place the remaining M10 washers (item 2) and nut (item 1) onto the end of the engine bar (please ensure the nut is fully engaged).
- Finally tighten the nuts with two 17mm sockets and wrenches until you feel some compression from inside the protector **PLEASE NOTE THE CRASH PROTECTOR MUST BE POSITIONED AS IN PICTURE 'C' WITH BIGGER END TOWARD FRONT OF BIKE.** Turn a little more so that you feel the compression increase slightly. Then apply a quarter turn. Do not over tighten as damage can occur to the bike. Do not exceed 40Nm of torque.
- Fit the crash protector caps (item 13) as shown in pictures A and B.

ISSUE 1 21/01/2013 (NSY)

CONSUMER NOTICE

The catalogue description and any exhibition of samples are only broad indications of the Products and R&G may make design changes which do not diminish their performance or visual appeal and supplying them in such state shall conform to the order.

R&G Racing

Unit 1 Shelleys Lane, East Worldham, Alton, Hants GU34 3AQ

Tel: +44 (0)1420 89007 Fax: +44 (0)1420 87301 www.rg-racing.com Email: info@rg-racing.com



The Buyer acknowledges no representation or warranty (other than as to title) has been given or will apply to the Products other than those in R&G's order or confirmation and the Buyer confirms it has chosen the Products as being of merchantable quality and suitable for its particular purposes. Where R&G fits the Products or undertakes other services it shall exercise reasonable skill and care and rectify any fault free of charge unless the workmanship has been disturbed. The Buyer is responsible for ensuring that the warranty on the motorcycle is not affected by the fitting of the Products. On return of any defective Products R&G shall at its option either supply a replacement or refund the purchase money but shall not be liable if the Products have been modified or used or maintained otherwise than in accordance with R&G's or manufacturer's instructions and good engineering practice or if the defect arises from accident or neglect. Other than identified above and subject to R&G not limiting its liability for causing death and personal injury, it shall not be liable for indirect or consequential loss and otherwise its liability shall be limited to the amounts paid by the Buyer for the Products or the fitting or service concerned. These terms do not affect the Buyer's statutory rights.

R&G RACING RETURNS POLICY (NON-FAULTY GOODS)

Returns must be pre-authorized (if not pre-authorized the return will be rejected). Goods may only be returned direct to us if they were purchased direct from us (customer must prove if necessary). Otherwise to be returned to original vendor. Goods must be in re-sellable condition, in the opinion of R&G Racing. All returns are subject to a 25% restocking and handling fee (25% of the gross value exc. P&P – at the prevailing price at time of purchase). The customer must pay any and all carriage charges. No returns of discontinued products, unless within 14 days of purchase. This policy does not affect your statutory rights and does not refer to faulty goods.

R&G Racing

Unit 1 Shelleys Lane, East Worldham, Alton, Hants GU34 3AQ
Tel: +44 (0)1420 89007 Fax: +44 (0)1420 87301 www.rg-racing.com Email: info@rg-racing.com



Instructions de montage pour CP0331BL Protections crash latérales
SUZUKI INAZUMA 250 2012

Page | 6



PHOTO 'A'



PHOTO 'B'



REAR OF BIKE

FRONT OF BIKE

PHOTO 'C'

LE KIT CONTIENT LES ARTICLES EXPOSES CI-DESSOUS, VERIFIER QUE TOUTES LES PIECES SOIENT PRESENTES AVANT DE PROCEDER AU MONTAGE.

La façon dont le kit est emballé ne correspond pas forcément à la façon de monter les pièces sur la moto.

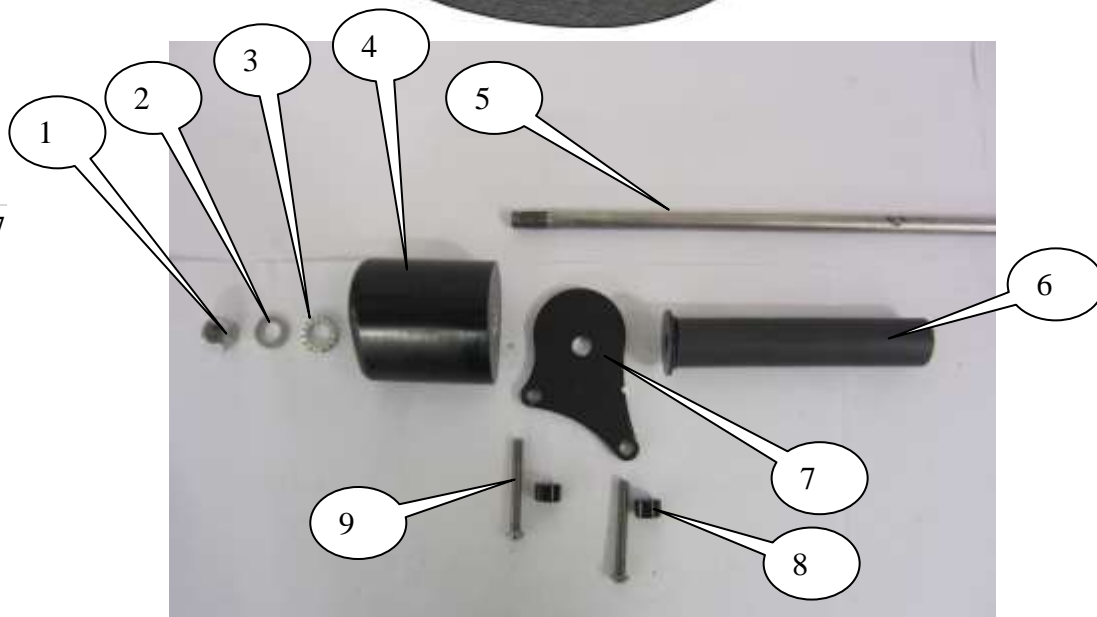
Les pièces présentées peuvent n'être que représentatives, afin de faciliter et clarifier les instructions de montage.

Notez que si les kits sont emballés avec des rondelles en caoutchouc servant à tenir les composants, *ces rondelles doivent être jetées.*

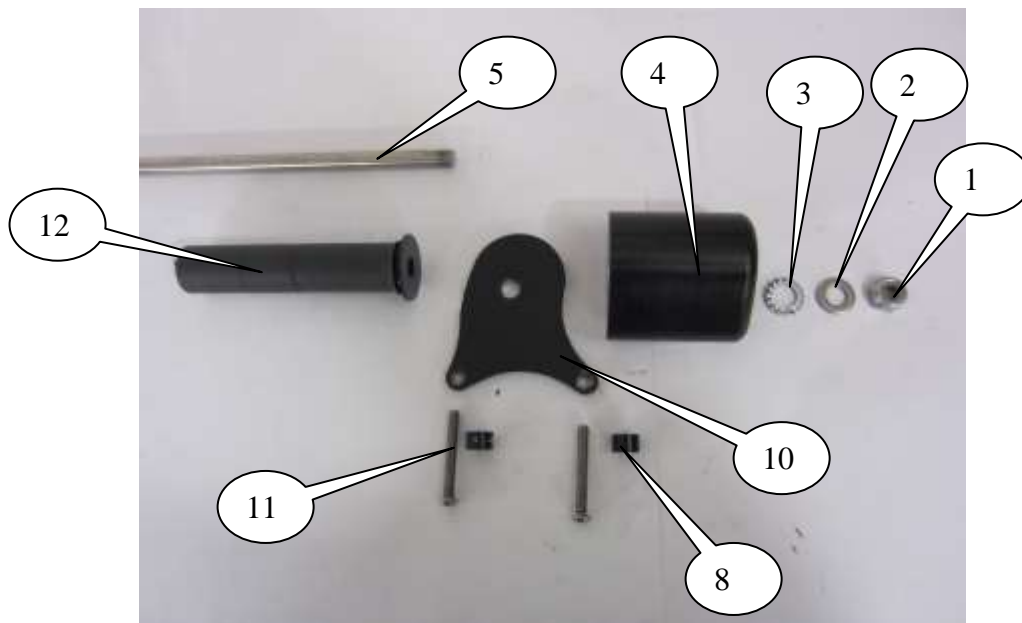
R&G Racing

Unit 1 Shelleys Lane, East Worldham, Alton, Hants GU34 3AQ

Tel: +44 (0)1420 89007 Fax: +44 (0)1420 87301 www.rg-racing.com Email: info@rg-racing.com



Coté gauche



Coté droit

Outils requis

- Clés à molette 8, 2x14 et 2x17mm
 - Clé Allen 4mm
- Clé dynamométrique (à 40Nm).

R&G Racing



LEGENDE

Page | 8

- ARTICLE 1 = M10 ECROUS EN NYLOC (x2).
ARTICLE 2 = M10 RONDELLES PLATES (x2).
ARTICLE 3 = LW0001 (M12 RONDELLES SHAKE PROOF) (x2).
ARTICLE 4 = B0061 avec CS341 (10mm) (LES 2 PROTECTIONS) (x2).
ARTICLE 5 = EB070 AXE MOTEUR (440mm de long) (x1).
ARTICLE 6 = S0601 ENTRETOISE COTE GAUCHE (138mm de long) (x1).
ARTICLE 7 = PLAQUE 0037 PLAQUE COTE GAUCHE (x1).
ARTICLE 8 = S0600 ENTRETOISES DE PLAQUE COTE GAUCHE ET DROIT (9mm de long) (x4).
ARTICLE 9 = M6x50mm BOULONS COTE GAUCHE (x2).
ARTICLE 10 = PLAQUE0038 PLAQUE COTE DROIT(x1).
ARTICLE 11 = M6x45mm BOULONS COTE DROIT (x2).
ARTICLE 12 = S0602 ENTRETOISE COTE DROIT (123mm de long) (x1).
ARTICLE 13 = BC0002 CAPUCHONS DE PROTECTION (x2) (non indiqué).



PHOTO 1



PHOTO 2



PHOTO 3



PHOTO 4

R&G Racing

Unit 1 Shelleys Lane, East Worldham, Alton, Hants GU34 3AQ
Tel: +44 (0)1420 89007 Fax: +44 (0)1420 87301 www.rg-racing.com Email: info@rg-racing.com



Instructions de montage

Coté gauche (assis sur la moto)

Page | 9

- Enlever les 2 boulons (Photo 1)..
- Enlever l'écrou en position (Photo 2).
- Utiliser le nouvel axe moteur (Article 5) pour pousser le boulon d'origine vers l'extérieur, en laissant dépasser la même longueur de chaque coté.
- Passer la plus longue entretoise (Article 6) autour de l'axe moteur du coté gauche, avec le plus grand diamètre le plus éloigné du support de montage.
- Placer la plaque de support (Article 7) autour de l'axe moteur de façon à ce qu'elle se place contre l'entretoise.
- Placer les 2 boulons les plus longs (Article 9) à travers les 2 plus petits trous dans la plaque de support (Photo 1).
- Placer une des entretoises de la plaque de support (Article 8) autour de l'extrémité de chaque boulon (Photo 2) puis serrer les 2 boulons.
- Placer la bonne protection crash (Article 4) sur l'extrémité de l'axe moteur.
- Placer une des rondelles Shake Proof (Article 3) sur l'axe moteur et dans le contre alésage de la protection crash.
- Place une des rondelles M10 (Article 2) et l'écrou (Article 1) sur l'axe moteur (assurez vous que l'écrou soit bien insérée).

Coté droit (assis sur la moto)

- Enlever les 2 boulons (Photo 3).
- Passer l'entretoise la plus courte (Article 12) autour de l'axe moteur du coté droit, avec le plus grand diamètre le plus éloigné du support de montage.
- Placer la plaque de support coté droit (Article 10) autour de l'axe moteur de façon à ce qu'elle se place contre l'entretoise.
- Placer les 2 boulons les plus courts (Article 11) à travers les 2 plus petits trous dans la plaque de support (Photo 3).
- Placer une des entretoises de la plaque de support (Article 8) autour de l'extrémité de chaque boulon (Photo 4) puis serrer les 2 boulons.
- Placer la protection crash restante (Article 4) sur l'extrémité de l'axe moteur.
- Insérer la rondelle Shake Proof restante (Article 3) sur l'axe moteur et dans le contre alésage de la protection crash.
- Placer les rondelles M10 restantes (Article 2) et l'écrou (Article 1) sur l'extrémité de l'axe moteur (Assurez vous que l'écrou doit complètement inséré).
- Serrer les écrous avec 2 clés à molette de 17mm jusqu'à ce que vous sentiez une légère compression de l'intérieur de la protection. **LA PROTECTION DOIT ETRE POSITIONNEE COMME EN "C" AVEC LE COTE ARRONDI LE PLUS GROS EN DIRECTION DE L'AVANT DE LA MOTO.** Tourner un peu plus afin d'accentuer légèrement la compression. Ne pas trop serrer, au risqué d'abîmer la moto. Pas plus de 40 Nm de couple.
- Mettre les capuchons aux protections (Article 13) (Photos A et B).

ISSUE 1 21/01/2013 (NSY)

R&G Racing

Unit 1 Shelleys Lane, East Worldham, Alton, Hants GU34 3AQ

Tel: +44 (0)1420 89007 Fax: +44 (0)1420 87301 www.rg-racing.com Email: info@rg-racing.com