



FITTING INSTRUCTIONS FOR LP0388 LICENCE PLATE BRACKET



**This kit contains the items pictured and labelled over page.
Some parts may be shown for clarity of instructions only.
Do not proceed until you are sure all parts are present.
Please read all instructions before proceeding.**

**IF IN ANY DOUBT WHEN FITTING OUR PRODUCTS, CONSULT ONE OF OUR DEALERS
OR HAVE FITTED BY A QUALIFIED TECHNICIAN.**

Please note that the way the kit is packed does not necessarily represent the way of mounting to the bike.

In the event of rubber washers being used to hold components onto bolts, these rubber washers can be thrown away.

DIGITAL COPIES OF THESE INSTRUCTIONS ARE AVAILABLE FROM

WWW.RG-RACING.COM

R&G

Unit 1, Shelley's Lane, East Worldham, Alton, Hampshire, GU34 3AQ
Tel: +44 (0)1420 89007 Fax: +44 (0)1420 87301 www.rg-racing.com Email: info@rg-racing.com



<u>TOOLS REQUIRED</u>	<u>GENERAL TORQUE SETTINGS</u>
<ul style="list-style-type: none"> • Set of metric Hex keys • T25 & T20 Torx head tool • Set of metric sockets and wrench. <ul style="list-style-type: none"> • 8mm spanner. 	M4 BOLT = 8Nm M5 BOLT = 12Nm M6 BOLT = 15Nm M8 BOLT = 20Nm M10 BOLT = 40Nm M12 BOLT = 40Nm

LEGEND

ITEM No.	DESCRIPTION	QTY
1	TB0388 PART 1 MAIN MOUNTING BRACKET	1
2	TB0388 PART 2 LICENCE PLATE BRACKET	1
3	TB0388 PART 3 COVER PLATE	1
4	TB0388 PART 4 RUBBER GASKET	1
5	MP0253 INDICATOR MOUNT RHS	1
6	MP0254 INDICATOR MOUNT LHS	1
7	LA0002 LICENSE PLATE LIGHT	1
8	M5 x 30mm CAP HEAD BOLT	2
9	M5 x 20mm CAP HEAD BOLT	2
10	M5 x 12mm BUTTON HEAD BOLT	4
11	M5 x 12mm COUNTERSUNK BOLT	3
12	M5 x 15mm BUTTON HEAD BOLT	4
13	M5 WASHER	23
14	M5 NUT	11
15	CON0014 CONNECTOR (NOT SHOWN)	1
16	CT75 CABLE TIE (NOT SHOWN)	4
17	666-896/20 HEAT SHRINK (NOT SHOWN)	1
18	REFL3 REFLECTOR (NOT SHOWN)	1

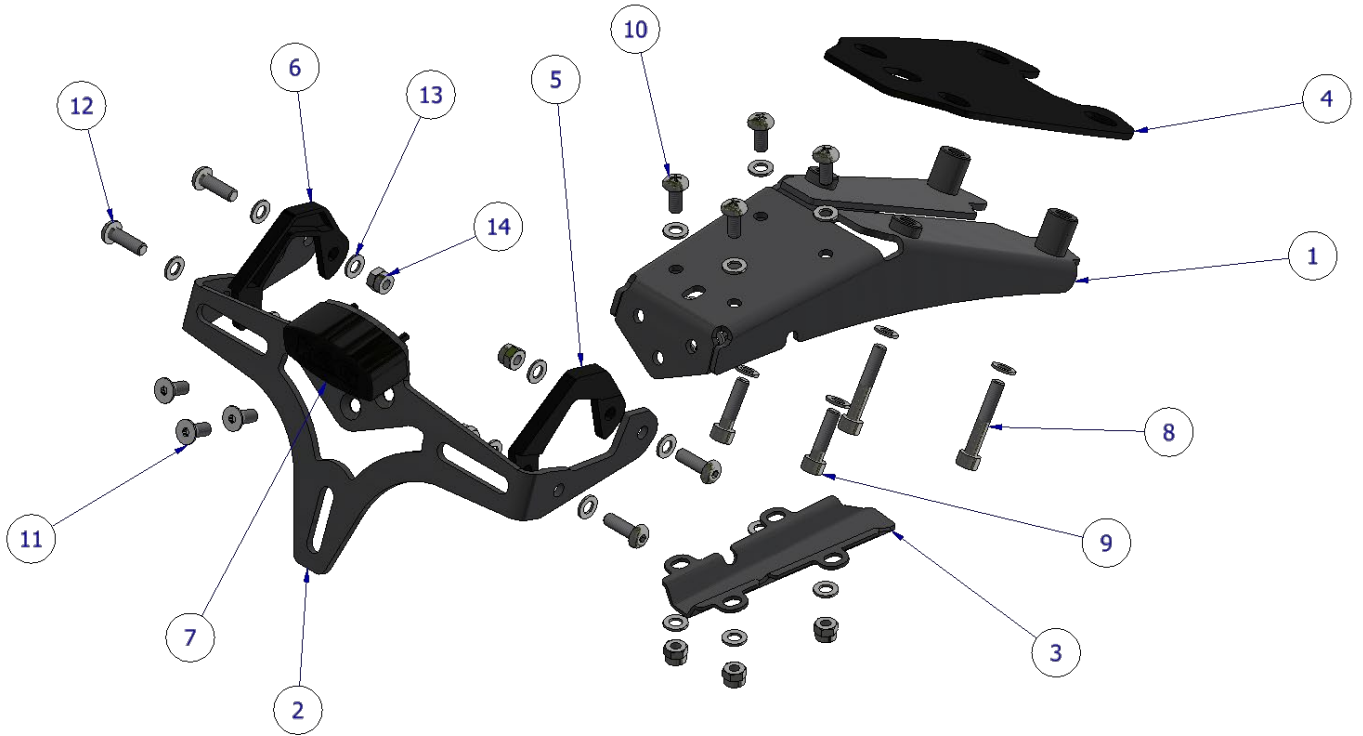
R&G

Unit 1, Shelley's Lane, East Worldham, Alton, Hampshire, GU34 3AQ

Tel: +44 (0)1420 89007 Fax: +44 (0)1420 87301 www.rg-racing.com Email: info@rg-racing.com



ASSEMBLY DIAGRAM



FITTING PICTURES



Picture 1



Picture 2



Picture 3

FITTING INSTRUCTIONS

Removing the OEM Tail Bracket

1. Remove the 4x bolts circled in Picture 1, supporting the OEM tail unit so it does not fall.
2. Disconnect the rear indicator and number plate light connectors located under the OEM tail unit.

Disassembly of the OEM Tail Unit

1. Remove all visible bolts from the tail unit and separate the two halves.
2. Remove the OEM indicators.
3. Re-assemble the tail unit without indicators and store.

Assembly of the R&G Tail Tidy

1. Cover the license plate light wires using the provided heat shrink.
2. Assemble the R&G tail unit as shown in the assembly diagram. Please note that the indicators need to be clamped into place using **Items 5 & 6**, then the wiring threaded underneath the tail unit.
3. The wires from the indicator & license plate light can then be covered using **Item 3**, as shown in Picture 2.
4. Attach the supplied connector to the license plate light wires.

Attaching the R&G Tail Tidy

1. Offer up the assembly to the motorcycles undertray & attach all 3 connectors & thread the indicator and licence plate illuminator cables up into the bike so they are not crushed.
2. Thread the 4x M5 bolts (**Items 8 & 9**) through the tail tidy assembly, M5 washers and subframe one by one until all four are tight enough to keep the assembly in position. **Make sure the rubber gasket is sandwiched between the bike & tail tidy bracket.**

R&G

Unit 1, Shelley's Lane, East Worldham, Alton, Hampshire, GU34 3AQ

Tel: +44 (0)1420 89007 Fax: +44 (0)1420 87301 www.rg-racing.com Email: info@rg-racing.com



3. Check the operation of the indicators and licence plate lights – and that the LHS and RHS indicators are in the correct orientation.
4. Tighten down all four bolts evenly according to the general torque settings table.

IMPORTANT: IF FITTING A FULL-SIZE LICENCE PLATE AND PLACING IT LOW DOWN ON THE LICENCE PLATE MOUNT, THERE IS A POTENTIAL CHANCE THE LICENCE PLATE COULD HIT THE BACK WHEEL UNDER HEAVY LOAD AND OVER LARGE BUMPS IN THE ROAD. IT IS YOUR RESPONSIBILITY TO CHECK FOR THIS POSSIBILITY AND TAKE AVOIDING ACTION. FAILURE TO CHECK THIS COULD RESULT IN SERIOUS INJURY.

ISSUE 1 - 17/01/2025 (MH)

CONSUMER NOTICE

The catalogue description and any exhibition of samples are only broad indications of the Products and R&G may make design changes which do not diminish their performance or visual appeal and supplying them in such state shall conform to the order. The Buyer acknowledges no representation or warranty (other than as to title) has been given or will apply to the Products other than those in R&G's order or confirmation and the Buyer confirms it has chosen the Products as being of merchantable quality and suitable for its particular purposes. Where R&G fits the Products or undertakes other services it shall exercise reasonable skill and care and rectify any fault free of charge unless the workmanship has been disturbed. The Buyer is responsible for ensuring that the warranty on the motorcycle is not affected by the fitting of the Products. On return of any defective Products R&G shall at its option either supply a replacement or refund the purchase money but shall not be liable if the Products have been modified or used or maintained otherwise than in accordance with R&G's or manufacturer's instructions and good engineering practice or if the defect arises from accident or neglect. Other than identified above and subject to R&G not limiting its liability for causing death and personal injury, it shall not be liable for indirect or consequential loss and otherwise its liability shall be limited to the amounts paid by the Buyer for the Products or the fitting or service concerned. These terms do not affect the Buyer's statutory rights.

R&G RACING RETURNS POLICY (NON-FAULTY GOODS)

Returns must be pre-authorized (if not pre-authorized the return will be rejected). Goods may only be returned direct to us if they were purchased direct from us (customer must prove if necessary). Otherwise to be returned to original vendor. Goods must be in re-sellable condition, in the opinion of R&G Racing. All returns are subject to a 25% restocking and handling fee (25% of the gross value exc. P&P – at the prevailing price at time of purchase). The customer must pay any and all carriage charges. No returns of discontinued products, unless within 14 days of purchase. This policy does not affect your statutory rights and does not refer to faulty goods.

R&G

Unit 1, Shelley's Lane, East Worldham, Alton, Hampshire, GU34 3AQ

Tel: +44 (0)1420 89007 Fax: +44 (0)1420 87301 www.rg-racing.com Email: info@rg-racing.com



NOTICE DE MONTAGE LP0388 SUPPORT DE PLAQUE



CE KIT CONTIENT LES ARTICLES ILLUSTRÉS ET ÉTIQUETES SUR LA PAGE.

CERTAINES PARTIES PEUVENT ÊTRE PRÉSENTES UNIQUEMENT POUR LA CLARTÉ DES INSTRUCTIONS.

NE PAS PROCÉDER AU MONTAGE TANT QUE VOUS N'ÊTES PAS SÛR QUE TOUTES LES PIÈCES SOIENT PRÉSENTES.

VEUILLEZ LIRE TOUTES LES INSTRUCTIONS AVANT DE CONTINUER.

EN CAS DE DOUTE LORS DU MONTAGE DE NOS PRODUITS, CONSULTEZ UN DE NOS REVENDEURS OU FAITES APPEL À UN TECHNICIEN QUALIFIÉ.

VEUILLEZ NOTER QUE LA FAÇON DONT LE KIT EST EMBALLÉ NE REPRÉSENTE PAS NECESSAIREMENT LA MANIÈRE DE LE MONTER SUR LA MOTO.

SI DES RONDELLES EN CAOUTCHOUC SONT UTILISÉES POUR MAINTENIR LES COMPOSANTS SUR LES BOULONS, ELLES PEUVENT ÊTRE JETÉES.

NOTICE DISPONIBLE AU TÉLÉCHARGEMENT SUR :
WWW.RG-RACING.COM

R&G

Unit 1, Shelley's Lane, East Worldham, Alton, Hampshire, GU34 3AQ

Tel: +44 (0)1420 89007 Fax: +44 (0)1420 87301 www.rg-racing.com Email: info@rg-racing.com



<u>OUTILS REQUIS</u>	<u>VALEURS DE SERRAGE</u>
<ul style="list-style-type: none"> • Clés Allen • Clés Torx T25 & T20 • Clé à cliquet + douilles 6, 10 & 12mm. • Clé à molette 8mm. 	M4 BOULON = 8Nm M5 BOULON = 12Nm M6 BOULON = 15Nm M8 BOULON = 20Nm M10 BOULON = 40Nm M12 BOULON = 40Nm

LÉGENDE

ARTICLE No.	DESCRIPTION		QTÉ
1	TB0388 PART 1	SUPPORT DE FIXATION	1
2	TB0388 PART 2	SUPPORT DE PLAQUE	1
3	TB0388 PART 3	PLAQUE DE COUVERTURE	1
4	TB0388 PART 4	JOINT EN CAOUTCHOUC	1
5	MP0253	SUPPORT CLIGNOTANT CÔTÉ DROIT	1
6	MP0254	SUPPORT CLIGNOTANT CÔTÉ GAUCHE	1
7	LA0002	FEU DE PLAQUE	1
8		M5 x 30mm BOULON	2
9		M5 x 20mm BOULON	2
10		M5 x 12mm BOULON	4
11		M5 x 12mm BOULON	3
12		M5 x 15mm BOULON	4
13		M5 RONDELLE	23
14		M5 ÉCROU	11
15	CON0014	CONNECTEUR (NON INDIQUÉ)	1
16	CT75	COLLIER DE SERRAGE (NON INDIQUÉ)	4
17	666-896/20	GAINÉ THERMO RÉTRACTABLE (NON INDIQUÉ)	1
18	REFL3	REFLECTEUR (NON INDIQUÉ)	1

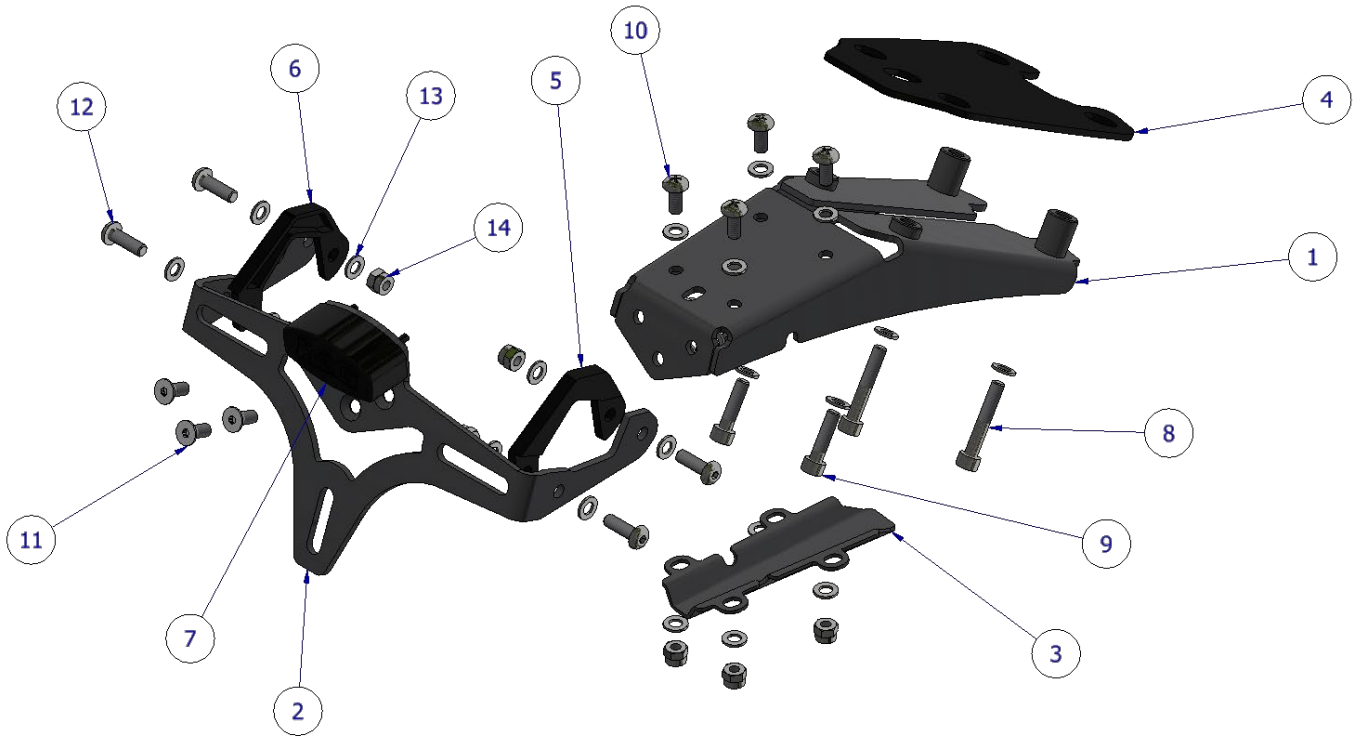
R&G

Unit 1, Shelley's Lane, East Worldham, Alton, Hampshire, GU34 3AQ

Tel: +44 (0)1420 89007 Fax: +44 (0)1420 87301 www.rg-racing.com Email: info@rg-racing.com



SCHÉMA D'ENSEMBLE



PHOTOS DE MONTAGE



Photo 1



Photo 2



Photo 3

NOTICE DE MONTAGE

Retrait du support arrière d'origine

3. Retirez les 4x boulons entourés sur la photo 1, soutenant l'unité arrière d'origine afin qu'elle ne tombe pas.
4. Débranchez les connecteurs des clignotants arrière et de feu de plaque d'immatriculation situés sous l'unité arrière d'origine

Démontage du support arrière d'origine

4. Retirez tous les boulons visibles de l'unité arrière et séparez les deux moitiés.
5. Retirez les clignotants d'origine.
6. Remontez l'unité arrière sans clignotants et rangez-la.

Assemblage du support R&G

5. Couvrez les fils du feu de plaque d'immatriculation à l'aide du manchon thermo rétractable fourni.
6. Assemblez l'unité arrière R&G comme indiqué sur le schéma d'assemblage. Veuillez noter que les clignotants doivent être fixés en place à l'aide des articles 5 et 6, puis le câblage doit être fileté sous l'unité arrière.
7. Les fils de clignotant et de feu de plaque d'immatriculation peuvent ensuite être recouverts à l'aide de l'article 3, comme indiqué sur la photo 2.
8. Fixez le connecteur fourni aux fils de feu de plaque d'immatriculation.

R&G

Unit 1, Shelley's Lane, East Worldham, Alton, Hampshire, GU34 3AQ

Tel: +44 (0)1420 89007 Fax: +44 (0)1420 87301 www.rg-racing.com Email: info@rg-racing.com



Fixation du support R&G

5. Présentez l'ensemble au-dessous de la moto et fixez les 3 connecteurs et faites passer les câbles des clignotants et de feu de plaque d'immatriculation dans la moto afin qu'ils ne soient pas écrasés.
6. Enfillez les 4 boulons M5 (articles 8 et 9) à travers l'ensemble du support arrière, les rondelles M5 et le sous-châssis un par un jusqu'à ce que les quatre soient suffisamment serrés pour maintenir l'ensemble en position. Assurez-vous que le joint en caoutchouc soit pris en sandwich entre la moto et le support arrière.
7. Vérifiez le fonctionnement des clignotants et des feux de plaque d'immatriculation - et que les clignotants gauche et droit soient dans la bonne direction.
8. Serrez les quatre boulons uniformément conformément au tableau général des réglages de couple.

IMPORTANT: SI VOUS INSTALLEZ UNE PLAQUE D'IMMATRICULATION DE TAILLE STANDARD ET QUE VOUS LA PLACEZ BASSE SUR LE SUPPORT DE PLAQUE D'IMMATRICULATION, IL Y A UN RISQUE POTENTIEL QUE LA PLAQUE D'IMMATRICULATION PUISSE HEURTER LA ROUE ARRIÈRE SOUS UNE LOURDE CHARGE ET SUR DE GROSSES BOSSES DE LA ROUTE. IL EST DE VOTRE RESPONSABILITÉ DE VÉRIFIER CETTE POSSIBILITÉ ET DE PRENDRE DES MESURES POUR L'ÉVITER. LE NON-RESPECT DE CE POINT PEUT ENTRAÎNER DES BLESSURES GRAVES.

ISSUE 1 - 17/01/2025 (MH)

CONSUMER NOTICE

The catalogue description and any exhibition of samples are only broad indications of the Products and R&G may make design changes which do not diminish their performance or visual appeal and supplying them in such state shall conform to the order. The Buyer acknowledges no representation or warranty (other than as to title) has been given or will apply to the Products other than those in R&G's order or confirmation and the Buyer confirms it has chosen the Products as being of merchantable quality and suitable for its particular purposes. Where R&G fits the Products or undertakes other services it shall exercise reasonable skill and care and rectify any fault free of charge unless the workmanship has been disturbed. The Buyer is responsible for ensuring that the warranty on the motorcycle is not affected by the fitting of the Products. On return of any defective Products R&G shall at its option either supply a replacement or refund the purchase money but shall not be liable if the Products have been modified or used or maintained otherwise than in accordance with R&G's or manufacturer's instructions and good engineering practice or if the defect arises from accident or neglect. Other than identified above and subject to R&G not limiting its liability for causing death and personal injury, it shall not be liable for indirect or consequential loss and otherwise its liability shall be limited to the amounts paid by the Buyer for the Products or the fitting or service concerned. These terms do not affect the Buyer's statutory rights.

R&G RACING RETURNS POLICY (NON-FAULTY GOODS)

Returns must be pre-authorized (if not pre-authorized the return will be rejected). Goods may only be returned direct to us if they were purchased direct from us (customer must prove if necessary). Otherwise to be returned to original vendor. Goods must be in re-sellable condition, in the opinion of R&G Racing. All returns are subject to a 25% restocking and handling fee (25% of the gross value exc. P&P - at the prevailing price at time of purchase). The customer must pay any and all carriage charges. No returns of discontinued products, unless within 14 days of purchase. This policy does not affect your statutory rights and does not refer to faulty goods.

R&G

Unit 1, Shelley's Lane, East Worldham, Alton, Hampshire, GU34 3AQ

Tel: +44 (0)1420 89007 Fax: +44 (0)1420 87301 www.rg-racing.com Email: info@rg-racing.com