



**FITTING INSTRUCTIONS FOR LP0329 LICENCE PLATE BRACKET**  
**KAWASAKI Z650RS 2022-**



**This kit contains the items pictured and labelled over page.**

**Some parts may be shown for clarity of instructions only.**

**Do not proceed until you are sure all parts are present.**

**Please read all instructions before proceeding.**

**IF IN ANY DOUBT WHEN FITTING OUR PRODUCTS, CONSULT ONE OF OUR DEALERS**  
**OR HAVE FITTED BY A QUALIFIED TECHNICIAN.**

Please note that the way the kit is packed does not necessarily represent the way of mounting to the bike.

In the event of rubber washers being used to hold components onto bolts, these rubber washers can be thrown away.

**DIGITAL COPIES OF THESE INSTRUCTIONS ARE AVAILABLE FROM**

**[WWW.RG-RACING.COM](http://WWW.RG-RACING.COM)**

R&G

Unit 1, Shelley's Lane, East Worldham, Alton, Hampshire, GU34 3AQ

Tel: +44 (0)1420 89007 Fax: +44 (0)1420 87301 [www.rg-racing.com](http://www.rg-racing.com) Email: [info@rg-racing.com](mailto:info@rg-racing.com)



<b><u>TOOLS REQUIRED</u></b>	<b><u>GENERAL TORQUE SETTINGS</u></b>
<ul style="list-style-type: none"> <li>• Set metric Allen keys.</li> <li>• Socket set to include 8, 10 ,12 and 13mm A/F socket and wrench.</li> <li>• Lose nose pliers</li> <li>• Phillips screwdriver.</li> <li>• Small flat head screwdriver.</li> <li>• Small amount of super glue.</li> </ul>	<p>M4 BOLT = 8Nm</p> <p>M5 BOLT = 12Nm</p> <p>M6 BOLT = 15Nm</p> <p>M8 BOLT = 20Nm</p> <p>M10 BOLT = 40Nm</p> <p>M12 BOLT = 40Nm</p>

### **LEGEND**

<b>ITEM No.</b>	<b>DESCRIPTION</b>	<b>QTY</b>
ITEM 1	TB0329 (LICENSE PLATE BRACKET)	1
ITEM 2	RG0037 (RUBBER GASKET)	1
ITEM 3	LA0002 (NUMBER PLATE LIGHT)	1
ITEM 4	IWC0002 (INDICATOR WIRING COVER)	2
ITEM 5	I0039 (INDICATOR ADAPTORS)	4
ITEM 6	M6 x 1.00 (NYLOC NUT)	4
ITEM 7	M6 WASHER (14mm OD)	8
ITEM 8	CON0060 (INDICATOR CONNECTORS)	2
ITEM 9	CON0007 (LICENSE PLATE ILLUMINATOR CONNECTOR)	1
ITEM 10	666-896 (200mm LENGTH OF HEAT SHRINK)	3
ITEM 11	CT75 (2.5mm WIDE x 75mm LONG CABLE TIES)	8
ITEM 12	CLIP1 (SELF ADHESIVE CABLE CLIPS)	4
ITEM 17	REFL3 (REFLECTOR)	1

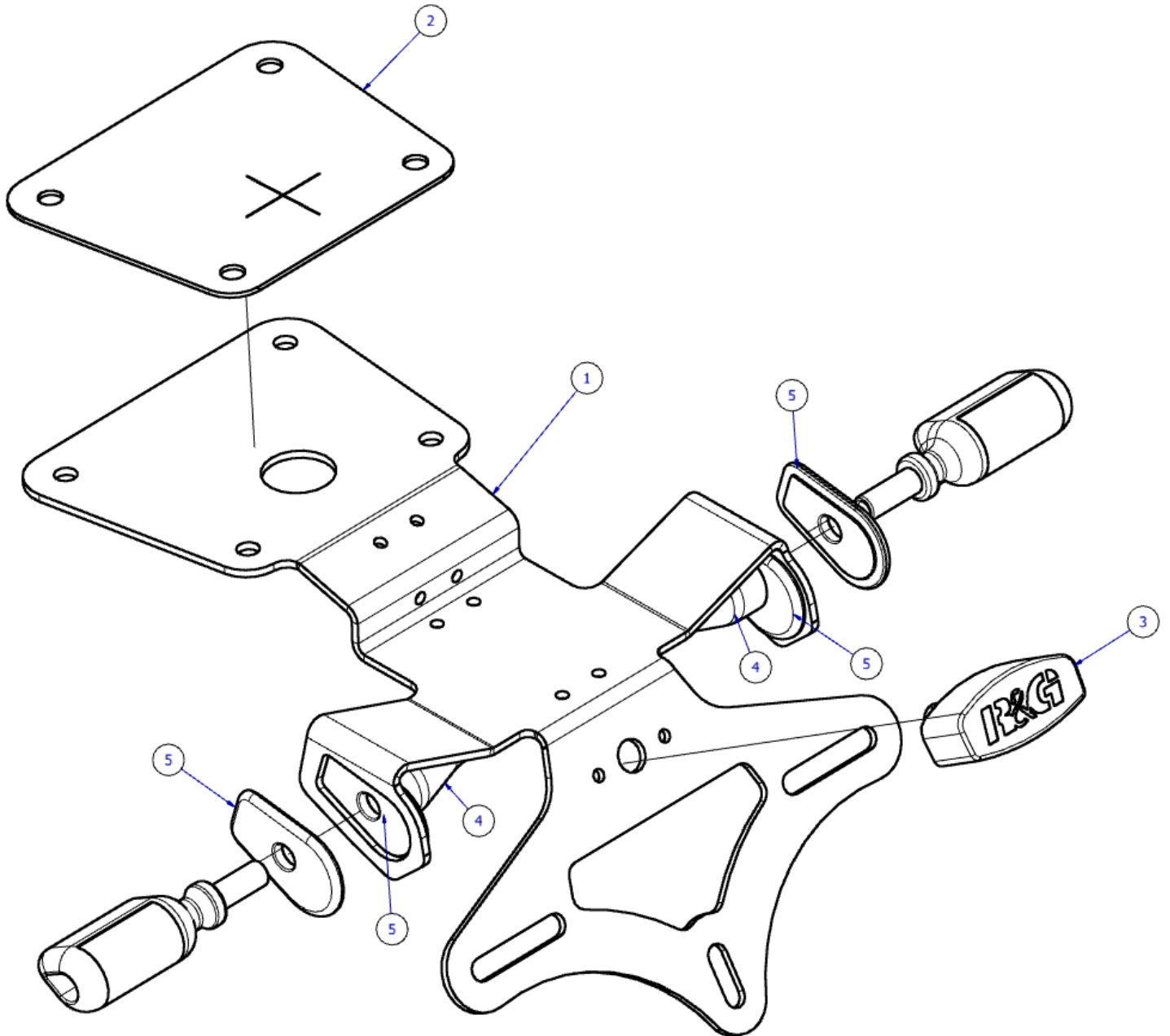
R&G

Unit 1, Shelley's Lane, East Worldham, Alton, Hampshire, GU34 3AQ

Tel: +44 (0)1420 89007 Fax: +44 (0)1420 87301 [www.rg-racing.com](http://www.rg-racing.com) Email: [info@rg-racing.com](mailto:info@rg-racing.com)



**ASSEMBLY DIAGRAM**



*\*Indicators not included in this kit.*



**FITTING PICTURES**



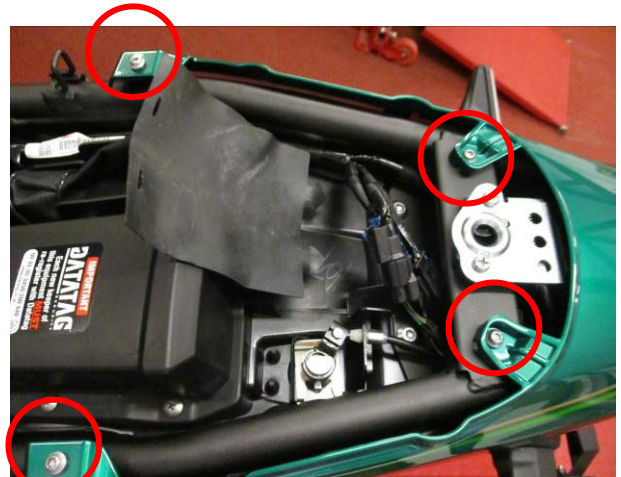
Picture 1



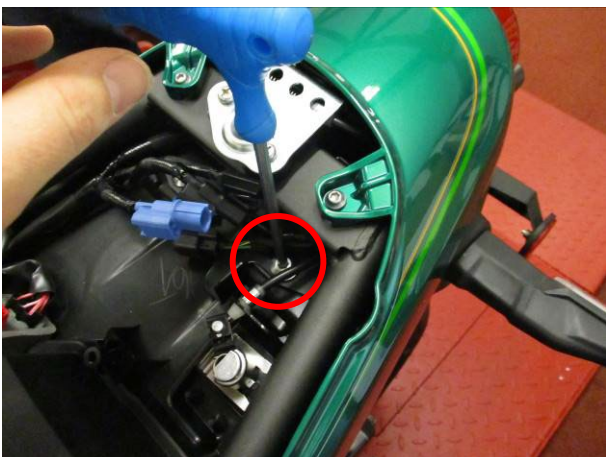
Picture 2



Picture 3



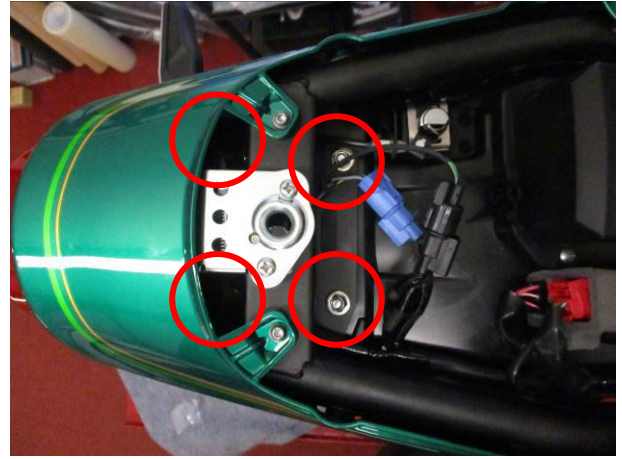
Picture 4





Picture 5

Picture 6



Picture 7

Picture 8



Picture 9

Picture 10



Picture 11

Picture 12



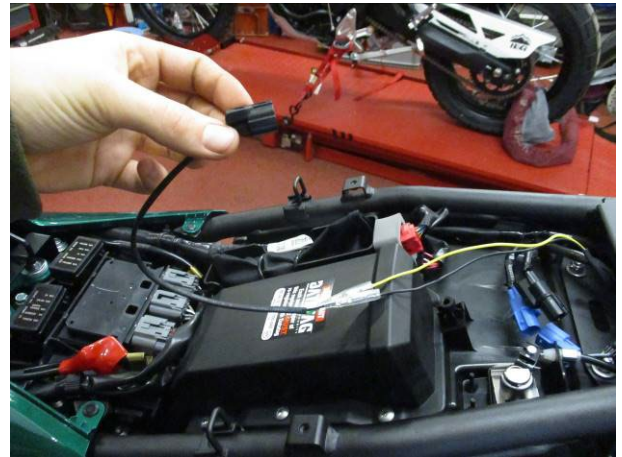
Picture 13



Picture 14



Picture 15



Picture 16



## **FITTING INSTRUCTIONS**

### **Removal of OEM license plate bracket**

- Begin by removing the seat using the key slot which has a rubber cover as shown in **Picture 1**.
- Remove the rubber cable sleeve as shown in **Picture 2** to expose the indicator and license plate illuminator connectors.
- Disconnect the 3 x connectors which were uncovered by the rubber cable sleeve as illustrated in **Picture 3**.
- To allow access to the rear 2 x license plate bracket mounting bolts, remove the rear seat cowl as shown in **Picture 4**.
- Remove the seat catch as shown in **Picture 5** and **Picture 6** to aid in remove the 4 x mounting bolts.
- Now the OEM license plate bracket mounting bolts can be removed allowing the bracket to be detached from the bike.

### **Assembly of R&G Tail Tidy**

- Present the R&G tail tidy to the underside of the bike and secure using the 4 x OEM mounting bolts from the underside of the bike as shown in **Picture 7** and **Picture 8** along with the 8 x washers (**item 7**) and 4 x nyloc nuts (**item 6**).
- Attach the license plate illuminator (**item 3**) as shown in the **Fitting Diagram** and connect to your OEM connector using the provided connector (**item 9**) as shown in **Picture 15**.
- To protect the cables, use 1 x length of the provided heat-shrink (**item 10**).
- Use the provided cable ties (**item 11**) to tidy the cable attaching it to the underside of the R&G tail tidy (**item 1**).
- Thread the cable from the license plate illuminator through the hole shown in **Picture 7** so it is presented in the cavity under the seat.

*Ensure that the wiring does not foul or become trapped during operation.*

### **If reusing the original indicators**

- Remove the 4 x fasteners as shown in **Picture 9**.
- You will be presented with an indicator housing as shown in **Picture 10**, remove the fastener highlighted in **Picture 10**.
- Now remove the plate as shown in **Picture 11**.
- Remove the next plate as shown in **Picture 12**.
- Lastly, remove the plastic cable guide as shown in **Picture 13** from inside the indicator with a pair of long nose pliers to make this easier.
- Simply push your OEM indicators into the allocated indicator stalk mounts on the R&G tail tidys as shown in **Picture 14** and re-assemble the indicator assembly as described above but in a reverse order.

R&G

Unit 1, Shelley's Lane, East Worldham, Alton, Hampshire, GU34 3AQ

Tel: +44 (0)1420 89007 Fax: +44 (0)1420 87301 [www.rg-racing.com](http://www.rg-racing.com) Email: [info@rg-racing.com](mailto:info@rg-racing.com)



- Re-connect your OEM indicators to the correct connectors and test your indicators are illuminating before riding. Tidy the cables by using the same method as the license plate illuminator (**item 3**) with the provided cable ties (**item 11**).

#### **If using R&G mini indicators**

- To fit the R&G Mini Indicators (R&G mini indicator product code RG371 for LED type or RG372 for Aero Style led type).
- Secure the R&G indicators as shown in the **Fitting Diagram** on page 3 using the supplied indicator adaptors (**item 5**).
- Use the indicator wiring covers (**item 4**) on both indicators to protect the nut and wiring as shown in the **Fitting Diagram**.
- Fit one length of heat-shrink (**item 10**) to the wires of each indicator so the heat-shrink fits over the stem of the nut/wire cover and gently heat until the heat-shrink contracts to the wiring and nut/wire cover.
- Attach the wiring to the tail bracket (**item 1**) using the supplied cable ties (**item 11**) into the slots provided.
- Connect the indicators to the original loom using the supplied connector adaptors (**item 8**) as shown in **Picture 16**. Ensure the connectors are the correct way around by testing the indicator flash pattern and which side is correctly flashing.
- Check all fasteners and connectors prior to riding the vehicle.

**IMPORTANT: IF FITTING A FULL-SIZE LICENCE PLATE AND PLACING IT FAR DOWN ON THE LICENCE PLATE HANGER, THERE IS A SMALL CHANCE OF THE LICENCE PLATE HITTING THE BACK WHEEL UNDER HEAVY LOAD AND OVER LARGE BUMPS IN THE ROAD. IT IS YOUR RESPONSIBILITY TO CHECK FOR THIS POSSIBILITY AND TAKE AVOIDING ACTION. FAILURE TO CHECK THIS COULD RESULT IN SERIOUS INJURY.**

ISSUE 1 - 25/01/2021 - (AO)

#### **CONSUMER NOTICE**

The catalogue description and any exhibition of samples are only broad indications of the Products and R&G may make design changes which do not diminish their performance or visual appeal and supplying them in such state shall conform to the order. The Buyer acknowledges no representation or warranty (other than as to title) has been given or will apply to the Products other than those in R&G's order or confirmation and the Buyer confirms it has chosen the Products as being of merchantable quality and suitable for its particular purposes. Where R&G fits the Products or undertakes other services it shall exercise reasonable skill and care and rectify any fault free of charge unless the workmanship has been disturbed. The Buyer is responsible for ensuring that the warranty on the motorcycle is not affected by the fitting of the Products. On return of any defective Products R&G shall at its option either supply a replacement or refund the purchase money but shall not be liable if the Products have been modified or used or maintained otherwise than in accordance with R&G's or manufacturer's instructions and good engineering practice or if the defect arises from accident or neglect. Other than identified above and subject to R&G not limiting its liability for causing death and personal injury, it shall not be liable for indirect or consequential loss and otherwise its liability shall be limited to the amounts paid by the Buyer for the Products or the fitting or service concerned. These terms do not affect the Buyer's statutory rights.

#### **R&G RACING RETURNS POLICY (NON-FAULTY GOODS)**

Returns must be pre-authorized (if not pre-authorized the return will be rejected). Goods may only be returned direct to us if they were purchased direct from us (customer must prove if necessary). Otherwise to be returned

R&G

Unit 1, Shelley's Lane, East Worldham, Alton, Hampshire, GU34 3AQ

Tel: +44 (0)1420 89007 Fax: +44 (0)1420 87301 [www.rg-racing.com](http://www.rg-racing.com) Email: [info@rg-racing.com](mailto:info@rg-racing.com)





to original vendor. Goods must be in re-sellable condition, in the opinion of R&G Racing. All returns are subject to a 25% restocking and handling fee (25% of the gross value exc. P&P – at the prevailing price at time of purchase). The customer must pay any and all carriage charges. No returns of discontinued products, unless within 14 days of purchase. This policy does not affect your statutory rights and does not refer to faulty goods.

R&G

Unit 1, Shelley's Lane, East Worldham, Alton, Hampshire, GU34 3AQ

Tel: +44 (0)1420 89007 Fax: +44 (0)1420 87301 [www.rg-racing.com](http://www.rg-racing.com) Email: [info@rg-racing.com](mailto:info@rg-racing.com)



**NOTICE DE MONTAGE POUR LP0329 SUPPORT DE PLAQUE**  
**KAWASAKI Z650RS 2022-**



**CE KIT CONTIENT LES ARTICLES ILLUSTRÉS ET ÉTIQUETES SUR LA PAGE.**

CERTAINES PARTIES PEUVENT ÊTRE PRÉSENTES UNIQUEMENT POUR LA CLARTÉ DES INSTRUCTIONS.

NE PAS PROCÉDER AU MONTAGE TANT QUE VOUS N'ÊTES PAS SÛR QUE TOUTES LES PIÈCES SOIENT PRÉSENTES.

**VEUILLEZ LIRE TOUTES LES INSTRUCTIONS AVANT DE CONTINUER.**

**EN CAS DE DOUTE LORS DU MONTAGE DE NOS PRODUITS, CONSULTEZ UN DE NOS REVENDEURS OU FAITES APPEL À UN TECHNICIEN QUALIFIÉ.**

VEUILLEZ NOTER QUE LA FAÇON DONT LE KIT EST EMBALLÉ NE REPRÉSENTE PAS NECESSAIREMENT LA MANIÈRE DE LE MONTER SUR LA MOTO.

SI DES RONDELLES EN CAOUTCHOUC SONT UTILISÉES POUR MAINTENIR LES COMPOSANTS SUR LES BOULONS, ELLES PEUVENT ÊTRE JETÉES.

**NOTICE DISPONIBLE AU TÉLÉCHARGEMENT SUR :**  
[WWW.RG-RACING.COM](http://WWW.RG-RACING.COM)

R&G

Unit 1, Shelley's Lane, East Worldham, Alton, Hampshire, GU34 3AQ  
Tel: +44 (0)1420 89007 Fax: +44 (0)1420 87301 [www.rg-racing.com](http://www.rg-racing.com) Email: [info@rg-racing.com](mailto:info@rg-racing.com)



<b><u>OUTILS REQUIS</u></b>	<b><u>VALEURS DE SERRAGE</u></b>
<ul style="list-style-type: none"> <li>• Clés Allen.</li> <li>• Clé à cliquet + douilles 8, 10 ,12 et 13mm.</li> <li>• Pince à bec large</li> <li>• Tournevis cruciforme .</li> <li>• Petit tournevis plat.</li> <li>• Un peu de superglue.</li> </ul>	<p>M4 BOULON = 8Nm</p> <p>M5 BOULON = 12Nm</p> <p>M6 BOULON = 15Nm</p> <p>M8 BOULON = 20Nm</p> <p>M10 BOULON = 40Nm</p> <p>M12 BOULON = 40Nm</p>

### **LÉGENDE**

<b>ARTICLE No.</b>	<b>DESCRIPTION</b>	<b>QTÉ</b>
ARTICLE 1	TB0329 (SUPPORT DE PLAQUE)	1
ARTICLE 2	RG0037 (JOINT EN CAOUTCHOUC)	1
ARTICLE 3	LA0002 (FEU DE PLAQUE)	1
ARTICLE 4	IWC0002 (CACHE FIL DE CLIGNOTANT)	2
ARTICLE 5	I0039 (ADAPTATEURS DE CLIGNOTANT)	4
ARTICLE 6	M6 x 1.00 (ÉCROU)	4
ARTICLE 7	M6 RONDELLE (14mm OD)	8
ARTICLE 8	CON0060 (CONNECTEURS DE CLIGNOTANT)	2
ARTICLE 9	CON0007 (CONNECTEUR DE FEU DE PLAQUE)	1
ARTICLE 10	666-896 (200mm LONGUEUR DE MANCHON THERMO RÉTRACTABLE)	3
ARTICLE 11	CT75 (2.5mm DE LARGE x 75mm COLLIERS DE SERRAGE)	8
ARTICLE 12	CLIP1 (CLIPS CÂBLE AUTOCOLLANTS)	4
ARTICLE 17	REFL3 (RÉFLECTEUR)	1

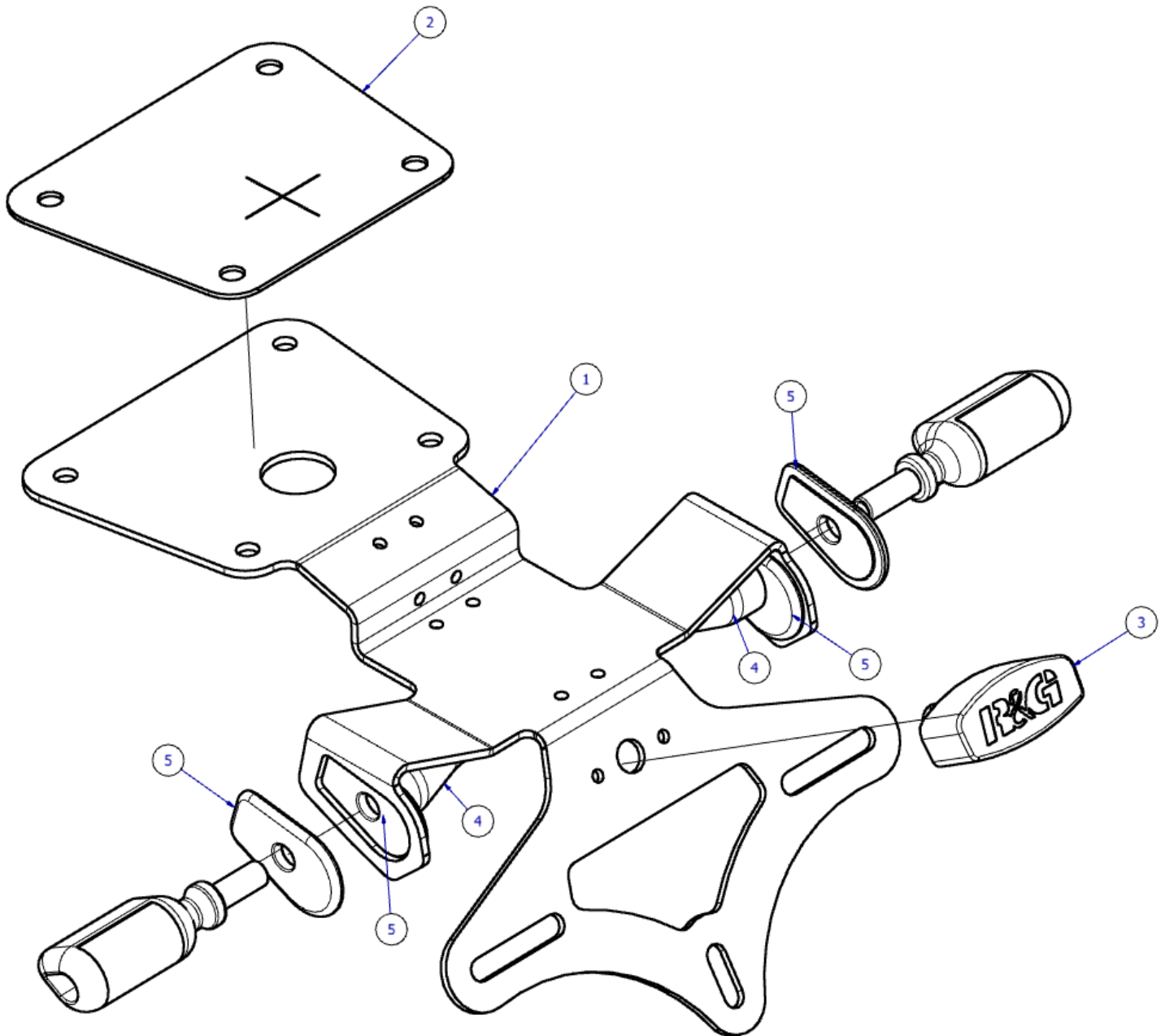
R&G

Unit 1, Shelley's Lane, East Worldham, Alton, Hampshire, GU34 3AQ

Tel: +44 (0)1420 89007 Fax: +44 (0)1420 87301 [www.rg-racing.com](http://www.rg-racing.com) Email: [info@rg-racing.com](mailto:info@rg-racing.com)



**SCHÉMA D'ENSEMBLE**



*\*Indicators not included in this kit.*



**PHOTOS DE MONTAGE**



Photo 1



Photo 2



Photo 3



Photo 4

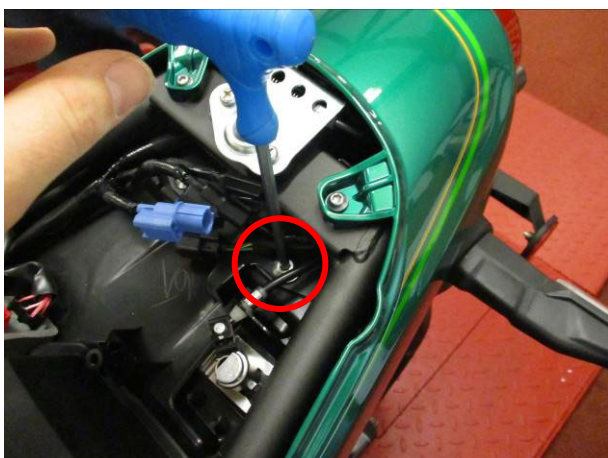


Photo 5



Photo 6

R&G



Photo 7



Photo 8



Photo 9



Photo 10



Photo 11



Photo 12



Photo 13



Photo 14

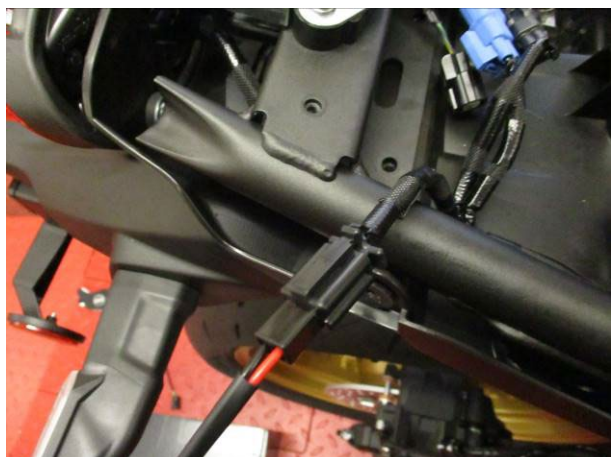


Photo 15

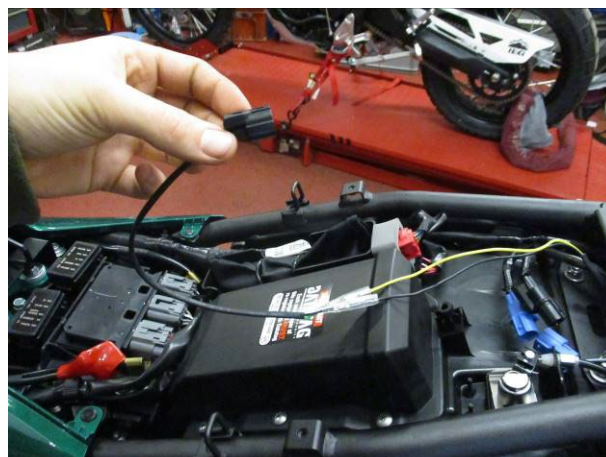


Photo 16

R&G

Unit 1, Shelley's Lane, East Worldham, Alton, Hampshire, GU34 3AQ

Tel: +44 (0)1420 89007 Fax: +44 (0)1420 87301 [www.rg-racing.com](http://www.rg-racing.com) Email: [info@rg-racing.com](mailto:info@rg-racing.com)



## **NOTICE DE MONTAGE**

### **Enlever le support de plaque d'origine**

- Commencez par retirer le siège à l'aide de la fente de clé qui a un couvercle en caoutchouc comme indiqué sur la photo 1.
- Retirez le manchon de câble en caoutchouc comme indiqué sur la photo 2 pour exposer les connecteurs de clignotant et de l'éclairage de la plaque d'immatriculation.
- Débranchez les 3 connecteurs qui ont été découverts par le manchon de câble en caoutchouc comme illustré sur la Photo 3.
- Pour permettre l'accès aux 2 boulons de montage du support de plaque d'immatriculation arrière, retirez le capot de siège arrière comme indiqué sur la photo 4.
- Retirez le loquet du siège comme indiqué sur la photo 5 et la photo 6 pour faciliter le retrait des 4 x boulons de montage.
- Maintenant, les boulons de montage du support de plaque d'immatriculation d'origine peuvent être retirés, ce qui permet de détacher le support de la moto.

### **Assembler le support de plaque R&G**

- Présentez le support arrière R&G au-dessous de la moto et fixez-le à l'aide des 4 boulons de montage d'origine au-dessous de la moto, comme indiqué sur la photo 7 et la photo 8, ainsi que des 8 rondelles (article 7) et des 4 écrous nyloc. (article 6).
- Fixez l'éclairage de la plaque d'immatriculation (article 3) comme indiqué sur le schéma de montage et connectez-le à votre connecteur d'origine à l'aide du connecteur fourni (article 9) comme indiqué sur la photo 15.
- Pour protéger les câbles, utilisez 1 x longueur de gaine thermo rétractable fournie (article 10).
- Utilisez les serre-câbles fournis (article 11) pour ranger le câble en le fixant sous le range-câbles R&G (article 1).
- Faites passer le câble de l'éclairage de la plaque d'immatriculation à travers le trou indiqué sur la photo 7 afin qu'il soit présenté dans la cavité sous le siège.

*Assurez-vous que le câblage ne s'encrasse pas ou ne se coince pas pendant le fonctionnement.*

### **Si vous réutilisez les clignotants d'origine**

- Retirez les 4 x attaches comme indiqué sur la Photo 9.
- Vous vous retrouverez avec un boîtier de clignotant comme indiqué sur la photo 10, retirez la fixation mise en évidence sur la photo 10.
- Retirez maintenant la plaque comme indiqué sur la Photo 11.
- Retirez la plaque suivante comme indiqué sur la Photo 12.
- Enfin, retirez le guide-câble en plastique comme indiqué sur la photo 13 de l'intérieur de clignotant avec une paire de pinces à bec long pour faciliter cette opération.

R&G

Unit 1, Shelley's Lane, East Worldham, Alton, Hampshire, GU34 3AQ

Tel: +44 (0)1420 89007 Fax: +44 (0)1420 87301 [www.rg-racing.com](http://www.rg-racing.com) Email: [info@rg-racing.com](mailto:info@rg-racing.com)





- Poussez simplement vos clignotants d'origine dans les supports de tige de clignotant attribués sur les supports R&G illustrés sur la photo 14 et réassemblez l'ensemble du clignotant comme décrit ci-dessus mais dans l'ordre inverse.
- Reconnectez vos clignotants d'origine aux bons connecteurs et vérifiez le bon fonctionnement de vos clignotants avant de rouler. Rangez les câbles en utilisant la même méthode que l'éclairage de plaque d'immatriculation (article 3) avec les serre-câbles fournis (article 11).

### **Si vous utilisez les mini clignotants R&G**

- Pour s'adapter aux mini-clignotants R&G (code produit du mini clignotant R&G RG371 pour le type LED ou RG372 pour le type LED latérale).
- Fixez les clignotants R&G comme indiqué sur le schéma de montage à la page 3 à l'aide des adaptateurs clignotants fournis (article 5).
- Utilisez les couvercles de câblage de clignotants (article 4) sur les deux clignotants pour protéger l'écrou et le câblage comme indiqué sur le schéma de montage.
- Installez une longueur de gaine thermo rétractable (article 10) sur les fils de chaque clignotant de manière à ce que la gaine thermo rétractable s'adapte sur la tige du couvercle de l'écrou/du fil et chauffez doucement jusqu'à ce que la gaine thermo rétractable se contracte sur le câblage et le couvercle de l'écrou/du fil .
- Fixez le câblage au support (article 1) à l'aide des serre-câbles fournis (article 11) dans les fentes prévues.
- Connectez les clignotants au faisceau d'origine à l'aide des adaptateurs de connecteurs fournis (article 8) comme indiqué sur la Photo 16. Assurez-vous que les connecteurs soient dans le bon sens en testant les clignotants afin de vérifier leur bon fonctionnement.
- Vérifiez toutes les fixations et tous les connecteurs avant d'utiliser la moto.

**IMPORTANT : SI VOUS INSTALLEZ UNE PLAQUE D'IMMATRICULATION DE GRANDE TAILLE ET LA PLACEZ LOIN VERS LE BAS SUR LE SUPPORT DE PLAQUE D'IMMATRICULATION, IL Y A UNE FAIBLE CHANCE QUE LA PLAQUE D'IMMATRICULATION FRAPPE LA ROUE ARRIÈRE SOUS L'EFFET D'UNE CHARGE LOURDE ET SUR DE GRANDES BOSSES SUR LA ROUTE. IL EST DE VOTRE RESPONSABILITÉ DE VÉRIFIER CETTE POSSIBILITÉ ET DE PRENDRE DES MESURES POUR L'ÉVITER. NE PAS VÉRIFIER CECI POURRAIT ENTRAÎNER DES BLESSURES GRAVES.**

ISSUE 1 - 25/01/2021 - (AO)

### **CONSUMER NOTICE**

The catalogue description and any exhibition of samples are only broad indications of the Products and R&G may make design changes which do not diminish their performance or visual appeal and supplying them in such state shall conform to the order. The Buyer acknowledges no representation or warranty (other than as to title) has been given or will apply to the Products other than those in R&G's order or confirmation and the Buyer confirms it has chosen the Products as being of merchantable quality and suitable for its particular purposes. Where R&G fits the Products or undertakes other services it shall exercise reasonable skill and care and rectify any fault free of charge unless the workmanship has been disturbed. The Buyer is responsible for ensuring that the warranty on the motorcycle is not affected by the fitting of the Products. On return of any defective Products R&G shall at its option either supply a replacement or refund the purchase money but shall not be liable if the Products have been modified or used or maintained otherwise than in accordance with R&G's or manufacturer's instructions and good engineering practice or if the defect arises from accident or neglect. Other than identified above and subject to R&G not limiting its liability for causing death and personal injury, it shall not be liable for indirect or consequential

R&G

Unit 1, Shelley's Lane, East Worldham, Alton, Hampshire, GU34 3AQ

Tel: +44 (0)1420 89007 Fax: +44 (0)1420 87301 [www.rg-racing.com](http://www.rg-racing.com) Email: [info@rg-racing.com](mailto:info@rg-racing.com)



loss and otherwise its liability shall be limited to the amounts paid by the Buyer for the Products or the fitting or service concerned. These terms do not affect the Buyer's statutory rights.

**R&G RACING RETURNS POLICY (NON-FAULTY GOODS)**

Returns must be pre-authorized (if not pre-authorized the return will be rejected). Goods may only be returned direct to us if they were purchased direct from us (customer must prove if necessary). Otherwise to be returned to original vendor. Goods must be in re-sellable condition, in the opinion of R&G Racing. All returns are subject to a 25% restocking and handling fee (25% of the gross value exc. P&P – at the prevailing price at time of purchase). The customer must pay any and all carriage charges. No returns of discontinued products, unless within 14 days of purchase. This policy does not affect your statutory rights and does not refer to faulty goods.

R&G

Unit 1, Shelley's Lane, East Worldham, Alton, Hampshire, GU34 3AQ

Tel: +44 (0)1420 89007 Fax: +44 (0)1420 87301 [www.rg-racing.com](http://www.rg-racing.com) Email: [info@rg-racing.com](mailto:info@rg-racing.com)



**MONTAGEANLEITUNG FÜR LP0329 KENNZEICHENHALTER**  
**KAWASAKI Z650RS 2022-**



**Alle Kit-Teile sind auf den nachfolgenden Seiten abgebildet und gekennzeichnet.**

**Die abgebildeten Teile dienen lediglich zur Erklärung.**

**Überprüfen Sie zuerst, dass alle Teile vorhanden sind.**

**Lesen Sie die Montageanleitung komplett durch, bevor Sie anfangen.**

**WENN SIE BEI DER MONTAGE DIESES PRODUKTES UNSICHER SIND, BITTE EINEN UNSERER HÄNDLER KONTAKTIEREN ODER DAS KIT VON EINEM QUALIFIZIERTEN ZWEIRAD-MECHANIKER MONTIEREN LASSEN.**

Die Verpackung der Teile stellt nicht die Reihenfolge der Montage dar.

Hinweis für Kits mit Plastikunterlegscheiben an den Schrauben –  
Diese Plastik-Unterlegscheiben werden nicht für den Einbau benötigt

**EINE DIGITALE VERSION DIESER MONTAGEANLEITUNG KANN AUF FOLGENDER SEITE HERUNTERGELADEN WERDEN:**

**[WWW.RG-RACING.COM](http://WWW.RG-RACING.COM)**

R&G

Unit 1, Shelley's Lane, East Worldham, Alton, Hampshire, GU34 3AQ

Tel: +44 (0)1420 89007 Fax: +44 (0)1420 87301 [www.rg-racing.com](http://www.rg-racing.com) Email: [info@rg-racing.com](mailto:info@rg-racing.com)



<b>SIE BENÖTIGEN FOLGENDES WEKZEUG</b>	<b>ALLGEM. ANZUGSDREHMOMENT</b>
<ul style="list-style-type: none"> <li>• Satz Inbusschlüssel</li> <li>• Steckschlüsselsatz inkl. 8, 10 ,12 und 13mm A/F</li> <li>• Spitzzange</li> <li>• Kreuzschlitzschraubenzieher</li> <li>• Kl. Flachklingenschraubenzieher</li> <li>• Kl. Menge Sekundenkleber</li> </ul>	<p>M4 SCHRAUBE = 8Nm</p> <p>M5 SCHRAUBE = 12Nm</p> <p>M6 SCHRAUBE = 15Nm</p> <p>M8 SCHRAUBE = 20Nm</p> <p>M10 SCHRAUBE = 40Nm</p> <p>M12 SCHRAUBE = 40Nm</p>

### **LIEFERUMFANG**

<b>ARTIKEL NR.</b>	<b>BESCHREIBUNG</b>	<b>MENGE</b>
ARTIKEL 1	TB0329 (KENNZEICHENHALTER)	1
ARTIKEL 2	RG0037 (GUMMIDICHTUNGSRING)	1
ARTIKEL 3	LA0002 (KENNZEICHENBELEUCHTUNG)	1
ARTIKEL 4	IWC0002 (ABDECKUNG VERKABELUNG BLINKER)	2
ARTIKEL 5	I0039 (ADAPTER - BLINKER)	4
ARTIKEL 6	M6 x 1.00 (SELBSTSICHERNDE MUTTER)	4
ARTIKEL 7	M6 UNTERLEGSCHIEBE (14mm OD)	8
ARTIKEL 8	CON0060 (VERBINDUNGEN BLINKER)	2
ARTIKEL 9	CON0007 (VERBINDUNG KENNZEICHENBELEUCHTUNG)	1
ARTIKEL 10	666-896 (200mm SCHRUMPFSCHLAUCH)	3
ARTIKEL 11	CT75 (KABELBINDER 2,5mm BREIT x 75mm LANG)	8
ARTIKEL 12	CLIP1 (SELBSTKLEBENDE KABELCLIPS)	4
ARTIKEL 17	REFL3 (RÜCKSTRAHLER)	1

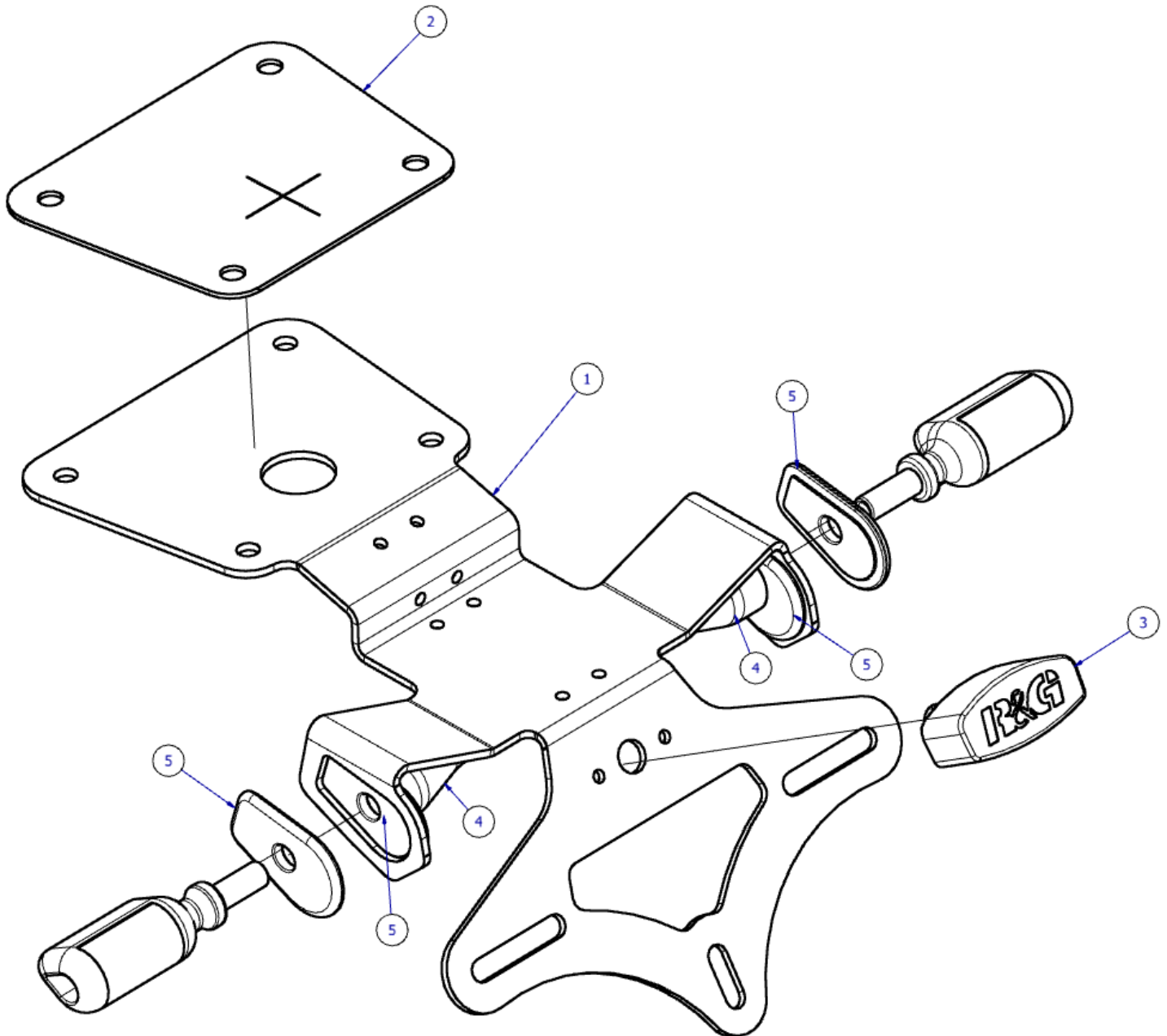
R&G

Unit 1, Shelley's Lane, East Worldham, Alton, Hampshire, GU34 3AQ

Tel: +44 (0)1420 89007 Fax: +44 (0)1420 87301 [www.rg-racing.com](http://www.rg-racing.com) Email: [info@rg-racing.com](mailto:info@rg-racing.com)



**ZEICHNUNG ZUSAMMENBAU**



*\*Indicators not included in this kit.*



**MONTAGE - ABBILDUNGEN**



Abbildung 1



Abbildung 2



Abbildung 3



Abbildung 4

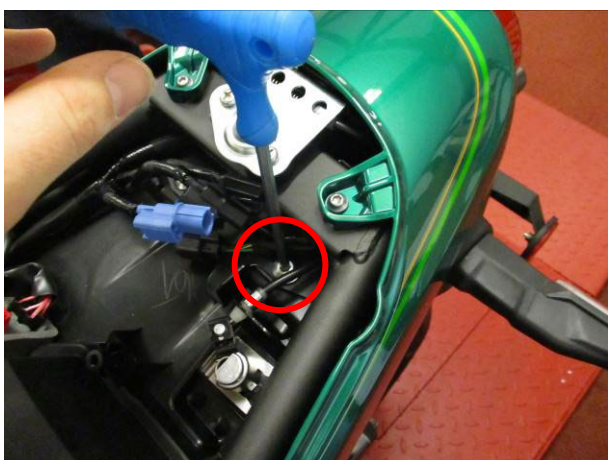


Abbildung 5



Abbildung 6

R&G

Unit 1, Shelley's Lane, East Worldham, Alton, Hampshire, GU34 3AQ

Tel: +44 (0)1420 89007 Fax: +44 (0)1420 87301 [www.rg-racing.com](http://www.rg-racing.com) Email: [info@rg-racing.com](mailto:info@rg-racing.com)



Abbildung 7



Abbildung 8



Abbildung 9



Abbildung 10



Abbildung 11



Abbildung 12



Abbildung 13



Abbildung 14



Abbildung 15

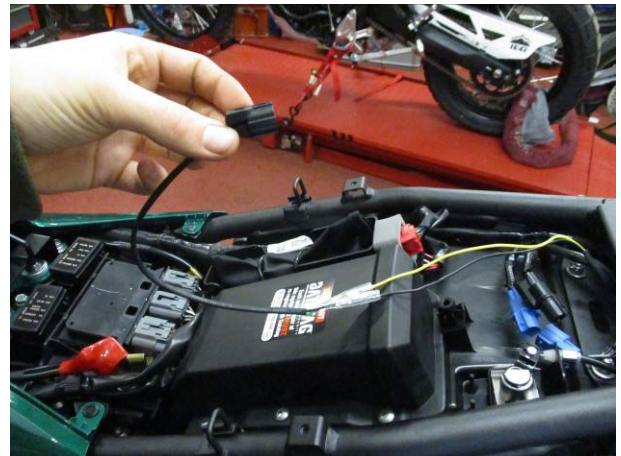


Abbildung 16





## MONTAGEANLEITUNG

### Entfernung des original Kennzeichenhalters

- Zuerst entfernen Sie den Sitz (der Schlüssel wird hierfür benötigt) – siehe **Abbildung 1**.
- Entfernen Sie die Kabelhülse aus Kunststoff wie in **Abbildung 2** abgebildet, um die Steckverbindungen für die Blinker und die Kennzeichenbeleuchtung freizulegen.
- Trennen Sie die 3 x Verbindungen, die unter der Kabelhülse waren wie in **Abbildung 3** abgebildet.
- Um Zugang zu den hinteren 2 x Schrauben des Kennzeichenhalters zu ermöglichen, entfernen Sie die hintere Heckverkleidung wie in **Abbildung 4** abgebildet.
- Entfernen Sie die Sitzverriegelung wie in **Abbildung 5** und **Abbildung 6** abgebildet, um die Entfernung der 4 x Montageschrauben zu vereinfachen.
- Jetzt können Montageschrauben des original Kennzeichenhalters entfernt werden und der Kennzeichenhalter vom Motorrad entfernt werden.

### Zusammenbau des Kennzeichenhalters

- Den R&G Kennzeichenhalter an die Unterseite des Motorrades ansetzen und, an der Unterseite beginnend, mit den 4 x Originalschrauben, 8 x Unterlegscheiben (**Artikel 7**) und 4 x selbstsichernden Muttern (**Artikel 6**) befestigen wie in **Abbildung 7** und **Abbildung 8** abgebildet.
- Den Kennzeichenhalter (**Artikel 3**) anbringen wie in der **Zeichnung Zusammenbau** abgebildet und die Originalverbindung mit der Verbindung vom Kit (**Artikel 9**) verbinden wie in **Abbildung 15** abgebildet.
- Benutzen Sie eine Länge Schrumpfschlauch (**Artikel 10**), um die Kabel zu schützen.
- Das Kabel ordentlich an der Unterseite des R&G Kennzeichenhalters (**Artikel 1**) mit den mitgelieferten Kabelbindern (**Artikel 11**) fixieren.
- Das Kabel für die Kennzeichenbeleuchtung vorsichtig durch die Öffnung und dann in den Freiraum unter dem Sitz einführen wie in **Abbildung 7** abgebildet.

Stellen Sie sicher, dass die Verkabelung nicht eingeklemmt werden kann.

### Wenn Sie die Originalblinker wieder montieren:

- Entfernen Sie die 4 x Fixierungen wie in **Abbildung 9** abgebildet.
- Danach sehen Sie das Gehäuse für die Blinker wie in **Abbildung 10** abgebildet – entfernen Sie die Fixierung, die in **Abbildung 10** gekennzeichnet ist.
- Nun entfernen Sie die Platte wie in **Abbildung 11** abgebildet.
- Danach entfernen Sie die nächste Platte wie in **Abbildung 12** abgebildet.
- Anschließend entfernen Sie die Kabelführung aus Kunststoff wie in **Abbildung 13** abgebildet – dies gelingt am einfachsten mit Hilfe einer Spitzzange.
- Die Originalblinker einfach in die vorgesehenen Halterungen am R&G Kennzeichenhalter eindrücken wie in **Abbildung 14** abgebildet die Blinker-Einheit wieder zusammenbauen wie oben beschrieben jedoch in umgekehrter Reihenfolge.
- Verbinden Sie die Originalblinker mit den gleichen Verbindungen wieder und überprüfen Sie, dass die Blinker ordnungsgemäß funktionieren, bevor Sie mit dem Motorrad fahren. Die Kabel

R&G

Unit 1, Shelley's Lane, East Worldham, Alton, Hampshire, GU34 3AQ

Tel: +44 (0)1420 89007 Fax: +44 (0)1420 87301 [www.rg-racing.com](http://www.rg-racing.com) Email: [info@rg-racing.com](mailto:info@rg-racing.com)



mit den Kabelbindern vom Kit (**Artikel 11**) ordentlich befestigen (wie zuvor bei der Kennzeichenbeleuchtung).

#### **Wenn Sie Miniblinker montieren:**

- Montage der R&G Miniblinker (R&G Artikel: RG371=LED oder RG372 = Aero LED):
- Sichern Sie die R&G Blinker mit den mitgelieferten Adaptern (**Artikel 5**) wie in der **Zeichnung Montage** auf Seite 3 abgebildet.
- Montieren Sie die Abdeckungen für die Blinker-Kabel (**Artikel 4**) an beiden Blinkern, um die Mutter und Kabel zu schützen wie in der **Zeichnung Zusammenbau** abgebildet.
- Eine Länge Schrumpfschlauch (**Artikel 10**) an den Kabeln für die Blinker anbringen, sodass der Schrumpfschlauch über den Stiel der Mutter-/Kabelabdeckung passt, dann vorsichtig erwärmen bis der Schrumpfschlauch passend geschrumpft ist.
- Die Verkabelung am Kennzeichenhalter (**Artikel 1**) anbringen und mit den mitgelieferten Kabelbindern (**Artikel 11**) fixieren (die Kabelbinder in die Schlitze einführen).
- Benutzen Sie die Verbindungen für die Blinker vom Kit (**Artikel 8**), um die Blinker mit dem Kabelbaum zu verbinden wie in **Abbildung 16** abgebildet. Stellen Sie sicher, dass die Blinker richtig herum angeschlossen sind (beim drücken des Schalters der gewünschte Blinker beginnt zu blinken / Blinkgeschwindigkeit passt).
- Überprüfen Sie, dass alle Fixierungen und Verbindungen ordnungsgemäß montiert sind, bevor Sie mit dem Motorrad fahren.

**WICHTIG: WENN EIN GROSSES KENNZEICHEN ZU WEIT NACH UNTEN MONTIERT WIRD, BESTEHT BEI SCHWERER LAST ODER DURCH GROSSE BODENWELLEN EIN GERINGES RISIKO, DASS DAS KENNZEICHEN AN DAS HINTERRAD STOSSEN KANN. ES LIEGT IN IHRER VERANTWORTUNG DIES ZU ÜBERPRÜFEN UND, WENN NOTWENDIG, VORBEUGENDE MASSNAHMEN ZU ERGREIFEN. DIE NICHTBEACHTUNG DIESER SICHERHEITSHINWEISES KANN ZU SCHWEREN VERLETZUNGEN FÜHREN.**

AUSGABE 1 - 25/01/2021 - (AO)

#### **CONSUMER NOTICE**

The catalogue description and any exhibition of samples are only broad indications of the Products and R&G may make design changes which do not diminish their performance or visual appeal and supplying them in such state shall conform to the order. The Buyer acknowledges no representation or warranty (other than as to title) has been given or will apply to the Products other than those in R&G's order or confirmation and the Buyer confirms it has chosen the Products as being of merchantable quality and suitable for its particular purposes. Where R&G fits the Products or undertakes other services it shall exercise reasonable skill and care and rectify any fault free of charge unless the workmanship has been disturbed. The Buyer is responsible for ensuring that the warranty on the motorcycle is not affected by the fitting of the Products. On return of any defective Products R&G shall at its option either supply a replacement or refund the purchase money but shall not be liable if the Products have been modified or used or maintained otherwise than in accordance with R&G's or manufacturer's instructions and good engineering practice or if the defect arises from accident or neglect. Other than identified above and subject to R&G not limiting its liability for causing death and personal injury, it shall not be liable for indirect or consequential loss and otherwise its liability shall be limited to the amounts paid by the Buyer for the Products or the fitting or service concerned. These terms do not affect the Buyer's statutory rights.

#### **R&G RACING RETURNS POLICY (NON-FAULTY GOODS)**

Returns must be pre-authorized (if not pre-authorized the return will be rejected). Goods may only be returned direct to us if they were purchased direct from us (customer must prove if necessary). Otherwise to be returned to original vendor. Goods must be in re-sellable condition, in the opinion of R&G Racing. All returns are subject to a 25% restocking and handling fee (25% of the gross value exc. P&P – at the prevailing price at time of purchase). The customer must pay any and all carriage charges. No returns of discontinued products, unless within 14 days of purchase. This policy does not affect your statutory rights and does not refer to faulty goods.

R&G

Unit 1, Shelley's Lane, East Worldham, Alton, Hampshire, GU34 3AQ

Tel: +44 (0)1420 89007 Fax: +44 (0)1420 87301 [www.rg-racing.com](http://www.rg-racing.com) Email: [info@rg-racing.com](mailto:info@rg-racing.com)