



**FITTING INSTRUCTIONS FOR LP0302BK LICENCE PLATE BRACKET  
FOR HONDA ADV150 2021-  
FOR ORIGINAL AND AFTERMARKET M8 INDICATORS**



**THIS KIT CONTAINS THE ITEMS PICTURED AND LABELLED OVER PAGE.**

SOME PARTS MAY BE SHOWN FOR CLARITY OF INSTRUCTIONS ONLY.

DO NOT PROCEED UNTIL YOU ARE SURE ALL PARTS ARE PRESENT.

**PLEASE READ ALL INSTRUCTIONS BEFORE PROCEEDING.**

**IF IN ANY DOUBT WHEN FITTING OUR PRODUCTS, CONSULT ONE OF  
OUR DEALERS OR HAVE FITTED BY A QUALIFIED TECHNICIAN.**

PLEASE NOTE THAT THE WAY THE KIT IS PACKED DOES NOT NECESSARILY REPRESENT THE  
WAY OF MOUNTING TO THE BIKE.

IN THE EVENT OF RUBBER WASHERS BEING USED TO HOLD COMPONENTS ONTO BOLTS,  
THESE RUBBER WASHERS CAN BE THROWN AWAY.

**DIGITAL COPIES OF THESE INSTRUCTIONS ARE AVAILABLE FROM:**

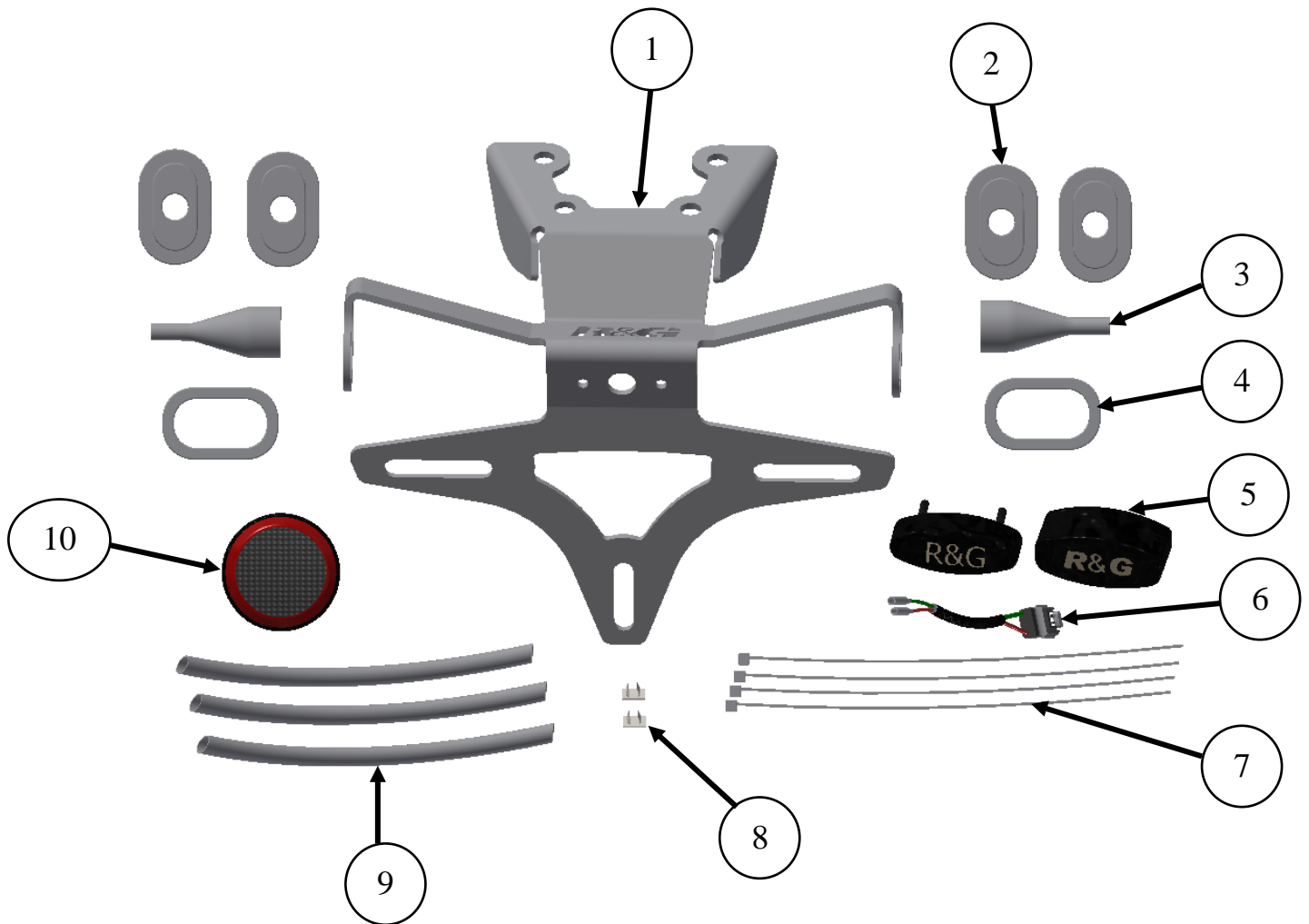
[WWW.RG-RACING.COM](http://WWW.RG-RACING.COM)



<b><u>TOOLS REQUIRED</u></b>	<b><u>GENERAL TORQUE SETTINGS</u></b>
<ul style="list-style-type: none"> <li>• Set of metric Allen keys.</li> <li>• Metric socket and wrench.               <ul style="list-style-type: none"> <li>• Phillips type driver.</li> </ul> </li> <li>• Cable cutters/ Electrical wire crimps.</li> </ul>	M4 BOLT = 8Nm M5 BOLT = 12Nm M6 BOLT = 15Nm M8 BOLT = 20Nm M10 BOLT = 40Nm M12 BOLT = 40Nm

### **LEGEND**

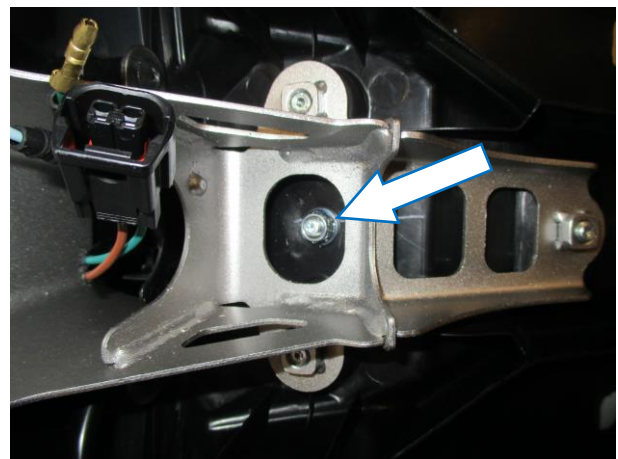
<b>ITEM NO.</b>	<b>DESCRIPTION</b>	<b>QTY</b>
ITEM 1	LICENCE PLATE BRACKET (TB0302)	1
ITEM 2	MINI INDICATOR INSERTS (I0065)	4
ITEM 3	INDICATOR WIRING COVERS (IWC0002)	2
ITEM 4	ORIGINAL INDICATOR INSERTS (I0032)	2
ITEM 5	LA0002 LICENCE PLATE ILLUMINATOR AND SHROUD	1
ITEM 6	LICENCE PLATE ILLUMINATOR CONNECTOR (CON0053)	1
ITEM 7	2.5mm CABLE TIES	4
ITEM 8	SELF-ADHESIVE CABLE CLIPS	2
ITEM 9	150mm LENGTH OF HEATSHRINK	3
ITEM 10	REFLECTOR (REFL 3)	1



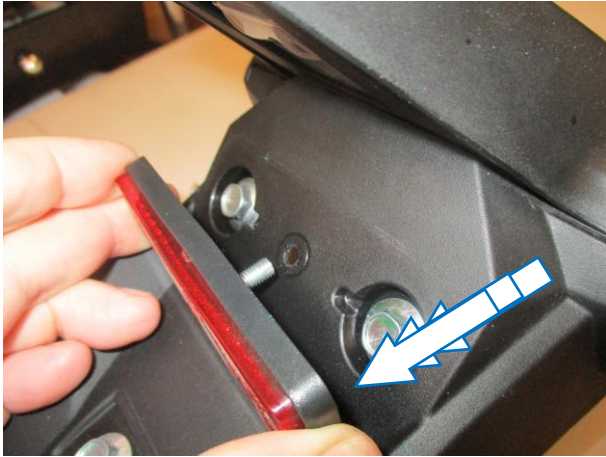
**Assembly Diagram**



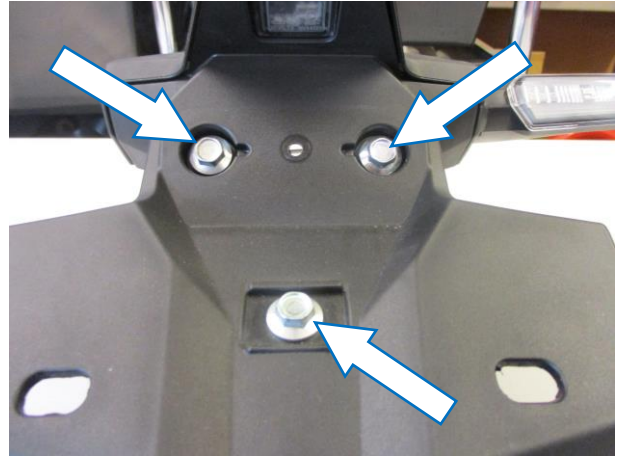
PICTURE 1



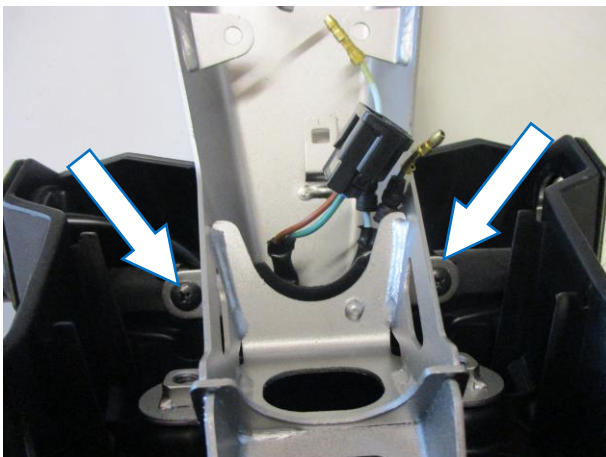
PICTURE 2



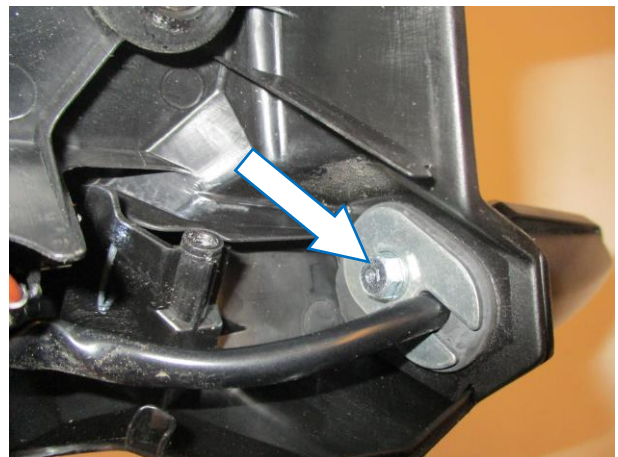
PICTURE 3



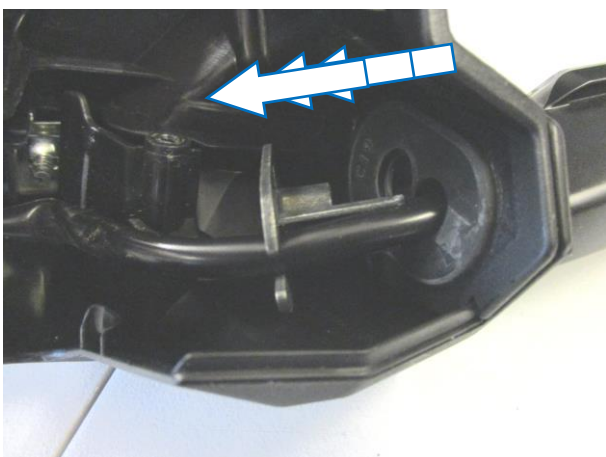
PICTURE 4



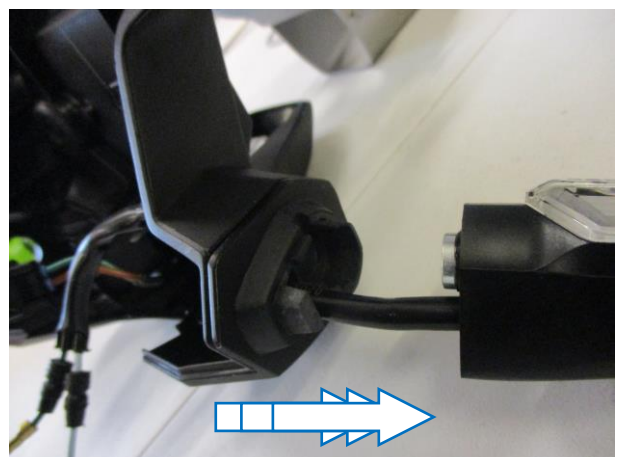
PICTURE 5



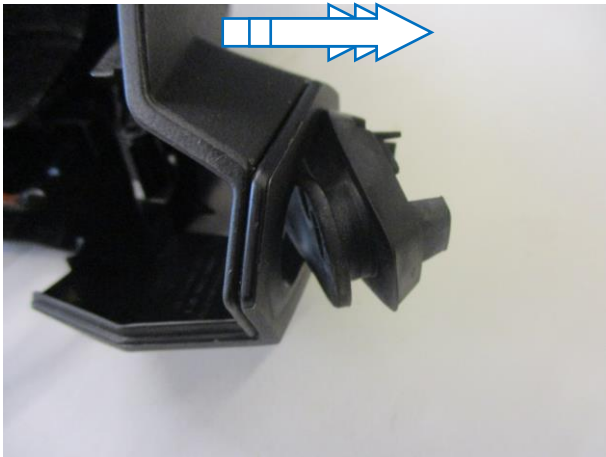
PICTURE 6



PICTURE 7



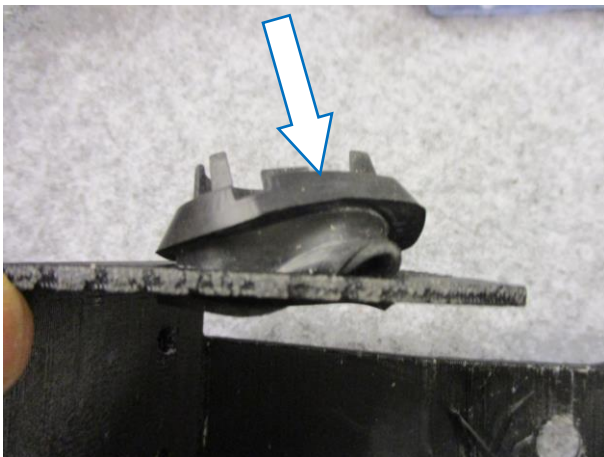
PICTURE 8



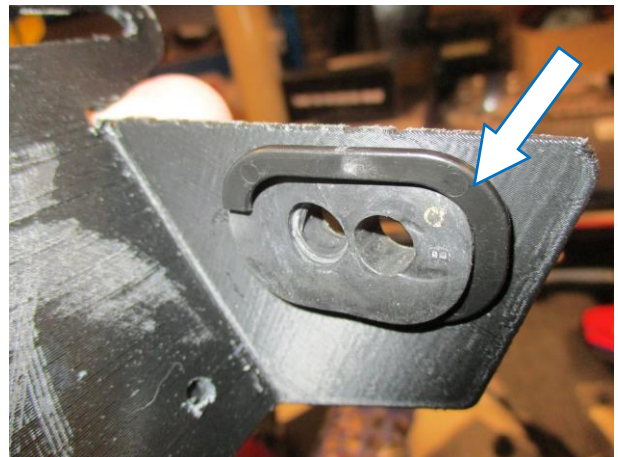
PICTURE 9



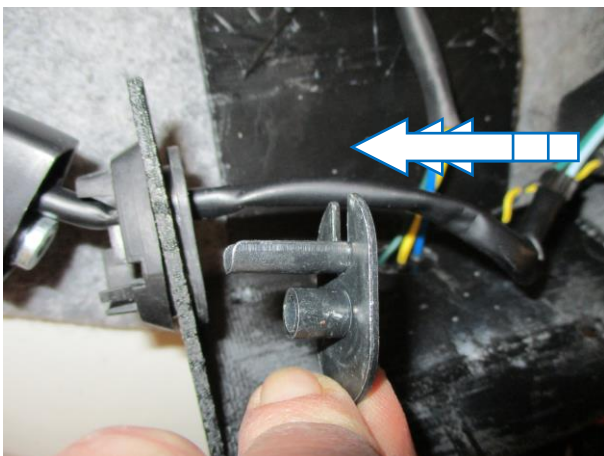
PICTURE 10



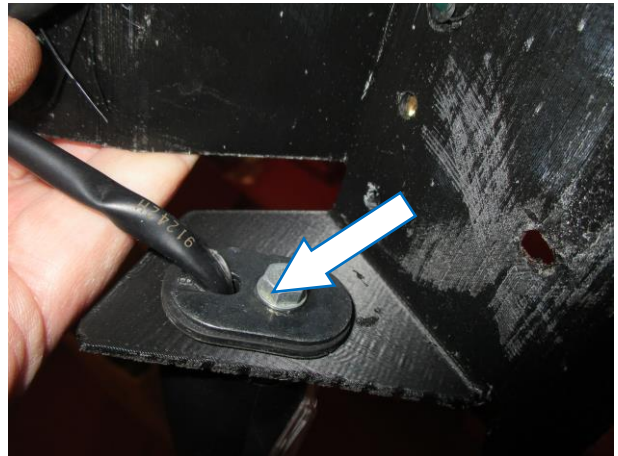
PICTURE 11



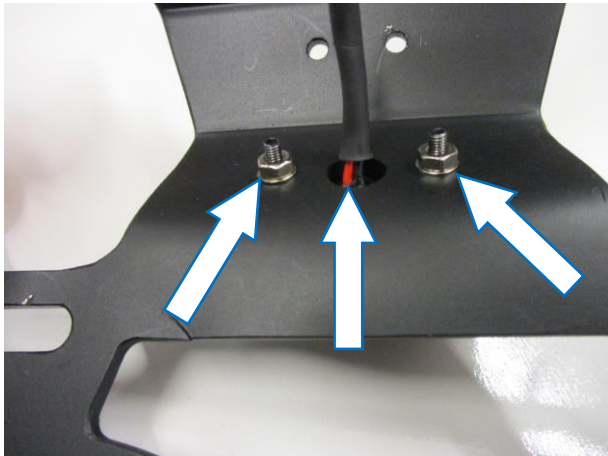
PICTURE 12



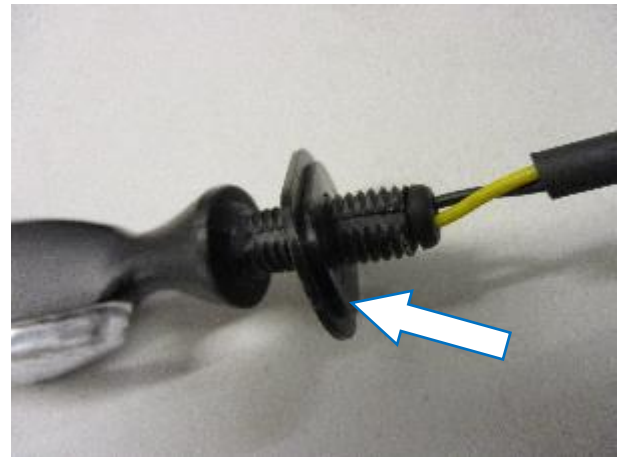
PICTURE 13



PICTURE 14



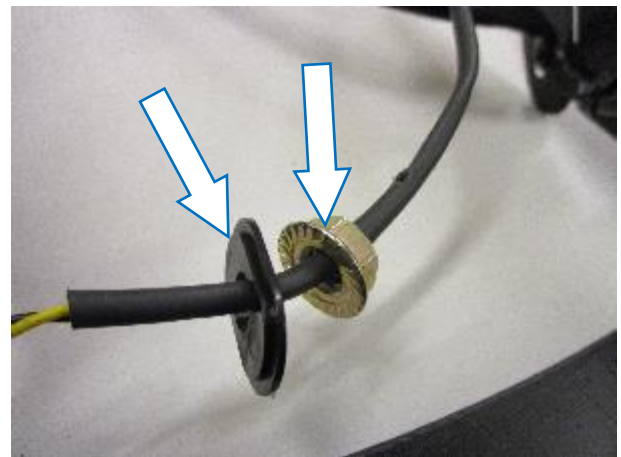
PICTURE 15



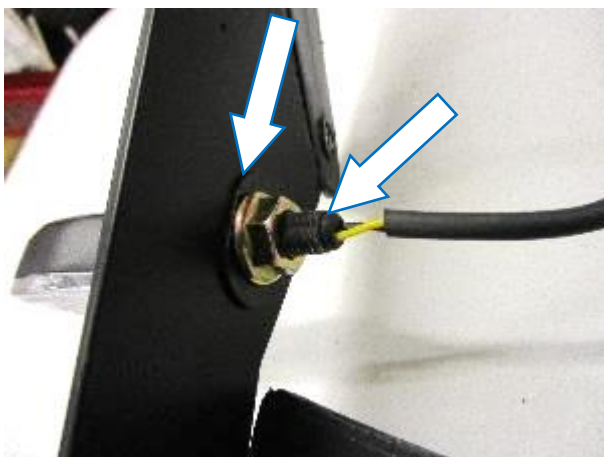
PICTURE 16



PICTURE 17



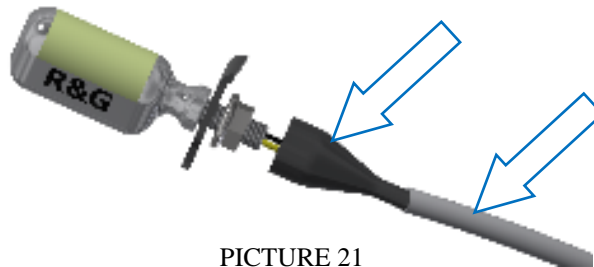
PICTURE 18



PICTURE 19



PICTURE 20



PICTURE 21

### **FITTING INSTRUCTIONS**

- Remove the four bolts arrowed in **picture 1**, then disconnect the indicator and licence plate illuminator wiring plug sockets, then carefully remove the original licence plate bracket.

### **If reusing the original indicators**

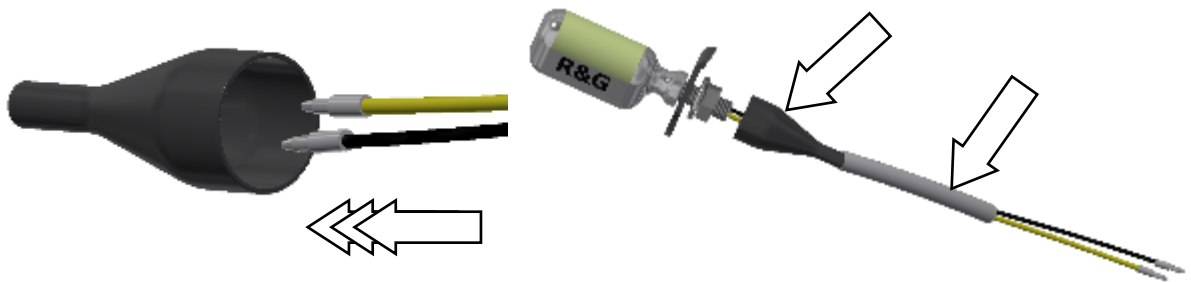
- Remove the bolt arrowed in **picture 2** then remove the original reflector as shown in **picture 3**.
- Remove the three bolts arrowed in **picture 4** and the two screws arrowed in **picture 5** then remove the metal mounting/support bracket.
- Remove the bolt arrowed in picture 6 then remove the cable guide/clamping bracket as shown in **picture 7**
- **Remove the indicator as shown in picture 8.**
- Cut the indicator spacer (**item 4**) as shown in **picture 10**.
- Gently squeeze the grommet and fit into the new licence plate bracket (**item 1**) as shown in **picture 11**, then use the cut spacer to tighten the location of the grommet as shown in **picture 12**.
- Refit the indicator into the grommet and refit the cable guide/clamping bracket as shown in **picture 13** and secure with the original bolt as shown in **picture 14**.
- Repeat the above for the opposite indicator.
- Fit the new licence plate illuminator (**item 5**) to the licence plate bracket and secure using the supplied nuts and washers as shown in **picture 15**.

### **If using the mini indicators**

- To fit the R&G Mini Indicators (R&G mini-indicator product code RG370 for bulb type, RG371 for LED type, RG373 for LED eyebrow or RG372 for Aero Style led type).
- Position one of the indicator adaptors (**item 2**) onto the wiring of each indicator as shown in **picture 16** (with the location spigot facing away from the indicator), place this assembly into the licence plate bracket as shown in **picture 17**.
- Place another of the adaptors onto the exposed wires (with the location spigot facing the bracket) and secure using the supplied nut as shown in **pictures 18 and 19**.
- Feed the indicator wiring through one of the nut/wire covers (**item 3**) as shown in **pictures below** and **picture 20** (it helps if a small amount of liquid detergent is used) and position the nut cover over the nut (repeat the above for the opposite indicator).



- Fit one length of heat-shrink (**item 9**) over the wires of each indicator so the heat-shrink fits over the stem of the nut/wire cover and gently heat until the heat-shrink contracts to the wiring and nut/wire cover as shown in **pictures below and pictures 20 and 21**.



- Offer the new licence plate bracket into position and secure using the original bolts.

#### **If using the original or R&G indicators**

- Connect the plug sockets to the wiring loom as original.

#### **To connect the new rear light**

- Use the supplied connector (**item 6**) to connect the indicator plug sockets as original (it is a good idea to check the operation of the licence plate illuminator and indicators at this stage if illumination fails please swap the bullet connectors over). You may also require resistors to achieve the correct flash rate (available separately).
- Use the supplied cable ties and clips (**items 7 and 8**) to neaten and tidy the wiring
- Refit licence plate (it may require drilling).
- **IMPORTANT: IF FITTING A FULL-SIZE LICENCE PLATE AND PLACING IT FAR DOWN ON THE LICENCE PLATE HANGER, THERE IS A SMALL CHANCE OF THE LICENCE PLATE HITTING THE BACK WHEEL UNDER HEAVY LOAD AND OVER LARGE BUMPS IN THE ROAD. IT IS YOUR RESPONSIBILITY TO CHECK FOR THIS POSSIBILITY AND TAKE AVOIDING ACTION. FAILURE TO CHECK THIS COULD RESULT IN SERIOUS INJURY.**
- Depending on local laws, attach enclosed reflector (**item 10**) in an appropriate location.
- Please retest all lights before riding.

ISSUE 1 09/04/2021 (NSY)

#### **CONSUMER NOTICE**

The catalogue description and any exhibition of samples are only broad indications of the Products and R&G may make design changes which do not diminish their performance or visual appeal and supplying them in such state shall conform to the order. The Buyer acknowledges no representation or warranty (other than as to title) has been given or will apply to the Products other than those in R&G's order or confirmation and the Buyer confirms it has chosen the Products as being of merchantable quality and suitable for its particular purposes. Where R&G fits the Products or undertakes other services it shall exercise reasonable skill and care and rectify any fault free of charge unless the workmanship has been disturbed. The Buyer is responsible for ensuring that the warranty on the motorcycle is not affected by the fitting of the Products. On return of any defective Products R&G shall at its option either supply a replacement or refund the purchase money but shall not be liable if the Products have been modified or used or maintained otherwise than in accordance with R&G's or manufacturer's instructions and good engineering practice or if the defect arises from accident or neglect. Other than identified above and subject to R&G not limiting its liability for causing death and personal injury, it shall not be liable for indirect or consequential loss and otherwise its liability shall be limited to the

R&G

Unit 1, Shelley's Lane, East Worldham, Alton, Hampshire, GU34 3AQ  
 Tel: +44 (0)1420 89007 Fax: +44 (0)1420 87301 [www.rg-racing.com](http://www.rg-racing.com) Email: [info@rg-racing.com](mailto:info@rg-racing.com)





amounts paid by the Buyer for the Products or the fitting or service concerned. These terms do not affect the Buyer's statutory rights.

**R&G RETURNS POLICY (NON-FAULTY GOODS)**

Returns must be pre-authorized (if not pre-authorized the return will be rejected). Goods may only be returned direct to us if they were purchased direct from us (customer must prove if necessary). Otherwise to be returned to original vendor. Goods must be in re-sellable condition, in the opinion of R&G. All returns are subject to a 25% restocking and handling fee (25% of the gross value exc. P&P – at the prevailing price at time of purchase). The customer must pay any and all carriage charges. No returns of discontinued products, unless within 14 days of purchase. This policy does not affect your statutory rights and does not refer to faulty goods.