



EH0085

**FITTING INSTRUCTIONS FOR EH0085BK EXHAUST HANGER**  
**KAWASAKI NINJA 400/250 2018-**

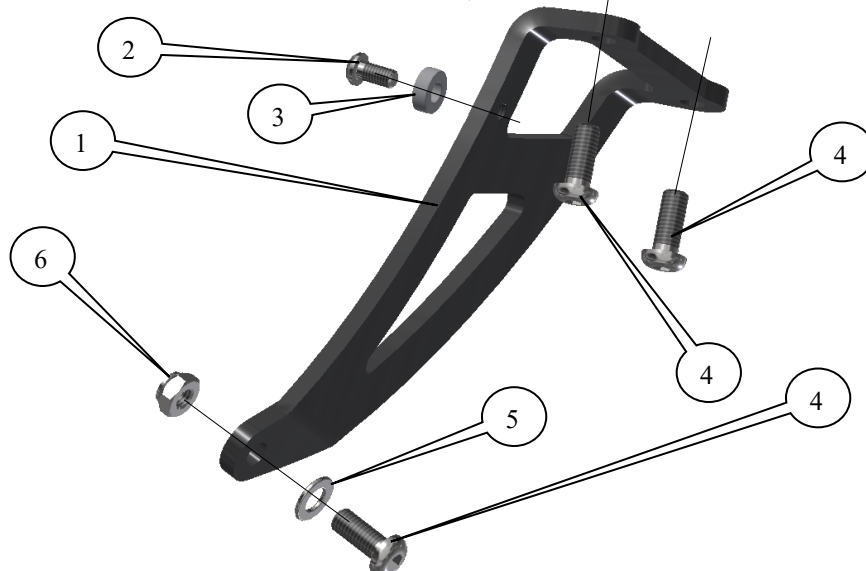
Page | 1



**THIS KIT CONTAINS THE ITEMS PICTURED AND LABELLED BELOW.**  
**DO NOT PROCEED UNTIL YOU ARE SURE ALL PARTS ARE PRESENT.**

Please note that the way the kit is packed does not necessarily represent the way of mounting to the bike.

THE PARTS SHOWN MAY BE REPRESENTATIVE ONLY (FOR CLARITY OF INSTRUCTIONS ONLY)





EH0085

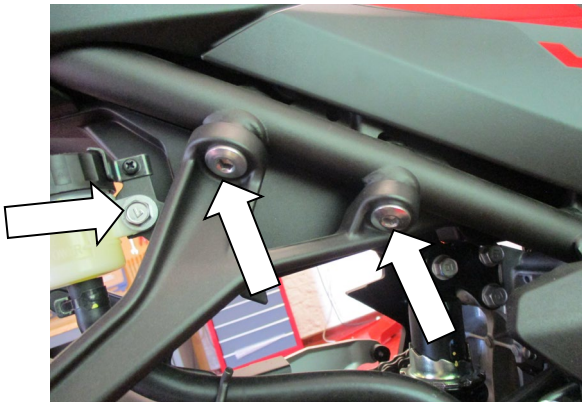
**LEGEND**

- ITEM 1 = EXHAUST HANGER (HB0085) (x1).
- ITEM 2 = M6 x 12mm LONG BUTTON HEAD BOLT (x1).
- ITEM 3 = SPACER 5mm WIDE (S0834) (x1).
- ITEM 4 = M8 x 20mm LONG BUTTON HEAD BOLTS (x3).
- ITEM 5 = M8 WASHER (x1).
- ITEM 6 = M8 NYLOC NUT (x1).

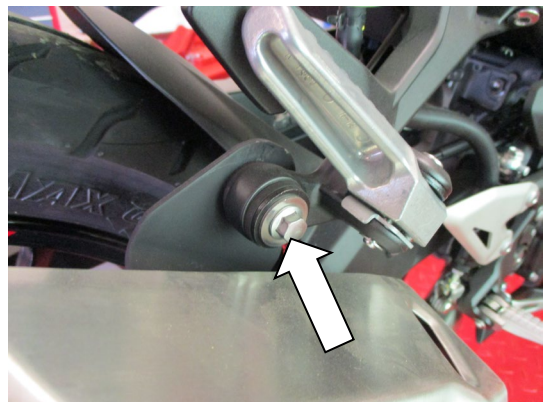
**TOOLS REQUIRED**

- Set of metric Allen keys to include 4, 5 & 6mm A/F sizes.
- Socket set to include 10, 12 & 13mm Spanners.

Please note that in cases where kits are packed with rubber washers holding the components onto the bolt – *the rubber washers should be thrown away!*



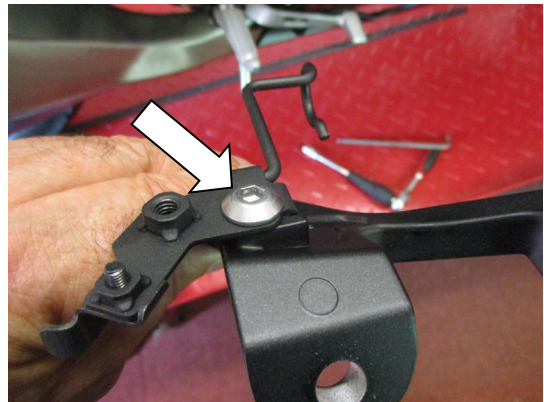
PICTURE 1



PICTURE 2



PICTURE 3



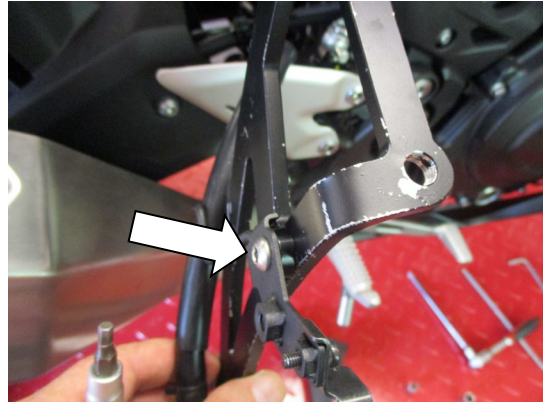
PICTURE 4



EH0085



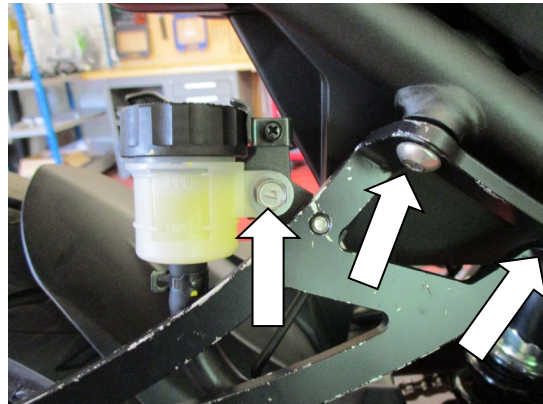
PICTURE 5



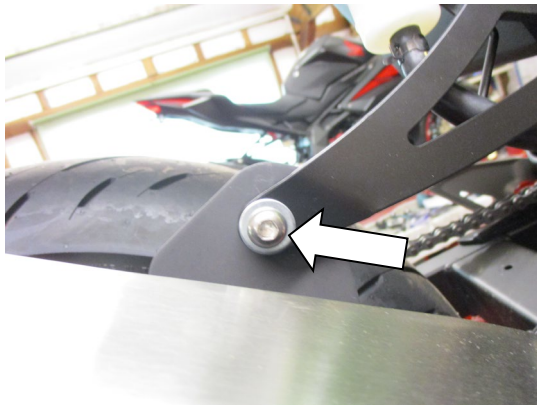
PICTURE 6



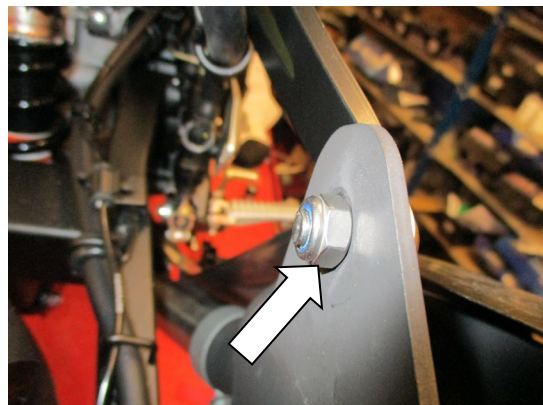
PICTURE 7



PICTURE 8



PICTURE 9



PICTURE 10



EH0085

## **FITTING INSTRUCTIONS**

- To fit the R&G Exhaust Hanger, the OEM pillion footrest mounting bracket needs to be removed.
- To do this, remove the two mounting bolts at the top of the pillion footrest mounting bracket and the reservoir bolt, as arrowed in picture 1.
- Remove the exhaust mounting nut and bolt (arrowed in pictures 2 and 3) and then remove the OEM pillion footrest mount from the bike.
- Remove the reservoir bracket bolt arrowed in picture 4 and remove the bracket as shown in picture 5.
- Place the M6 button head bolt (item 2) through the original reservoir mounting bracket as shown in picture 6.
- Place the spacer (item 3) over the exposed thread as shown in picture 6.
- Mount the reservoir bracket to the threaded hole in the new exhaust bracket (item 1) as shown in pictures 6, 7 and 8.
- Offer this assembly into position and secure the exhaust bracket to the rear sub-frame using two of the M8 bolts (item 4) as arrowed in picture 8.
- Remount and secure the reservoir using the original bolt as shown in picture 8.
- Place the M8 washer (item 5) onto the remaining M8 bolt (item 4), then through the lower hole in the exhaust hanger and the exhaust bracket and secure using the nyloc nut (item 6) as shown in pictures 9 and 10.
- Ensure the exhaust hanger is correctly fitted before tightening all bolts.
- Please ensure when the motorcycle is being used that no parts are in such a position that they may collide/damage other bike parts (this is particularly important if using after-market cans or exhaust systems).

***Please note that it is your responsibility to ensure that no part of the exhaust hanger or exhaust assembly fouls or comes into contact with other parts of the machine. Do not ride the motorcycle until this aspect has been verified and you have compressed the rear suspension (if appropriate to the design of the motorcycle) to test this thoroughly.***

ISSUE 1 09/07/2018 (NSY)

### **CONSUMER NOTICE**

The catalogue description and any exhibition of samples are only broad indications of the Products and R&G may make design changes which do not diminish their performance or visual appeal and supplying them in such state shall conform to the order. The Buyer acknowledges no representation or warranty (other than as to title) has been given or will apply to the Products other than those in R&G's order or confirmation and the Buyer confirms it has chosen the Products as being of merchantable quality and suitable for its particular purposes. Where R&G fits the Products or undertakes other services it shall exercise reasonable skill and care and rectify any fault free of charge unless the workmanship has been disturbed. The Buyer is responsible for ensuring that the warranty on the motorcycle is not affected by the fitting of the Products. On return of any defective Products R&G shall at its option either supply a replacement or refund the purchase money but shall not be liable if the Products have been modified or used or maintained otherwise than in accordance with R&G's or manufacturer's instructions and good engineering practice or if the defect arises from accident or neglect. Other than identified above and subject to R&G not limiting its liability for causing death and personal injury, it shall not be liable for indirect or consequential loss and otherwise its liability shall be limited to the amounts paid by the Buyer for the Products or the fitting or service concerned. These terms do not affect the Buyer's statutory rights.

### **R&G RACING RETURNS POLICY (NON-FAULTY GOODS)**

Returns must be pre-authorised (if not pre-authorised the return will be rejected). Goods may only be returned direct to us if they were purchased direct from us (customer must prove if necessary). Otherwise to be returned to original vendor. Goods must be in re-sellable condition, in the opinion of R&G Racing. All returns are subject to a 25% restocking and handling fee (25% of the gross value exc. P&P – at the prevailing price at time of purchase). The customer must pay any and all carriage charges. No returns of discontinued products, unless within 14 days of purchase. This policy does not affect your statutory rights and does not refer to faulty goods.

Racing Technique Ltd T/A R&G  
Unit 1, Shelley's Lane, East Worldham, Alton, Hampshire, GU34 3AQ  
Tel: +44 (0)1420 89007 Fax: +44 (0)1420 87301 [www.rg-racing.com](http://www.rg-racing.com) Email: [info@rg-racing.com](mailto:info@rg-racing.com)



EH0085

**NOTICE DE MONTAGE POUR EH0085BK SUPPORT POT D'ÉCHAPPEMENT  
KAWASAKI NINJA 400/250 2018-**

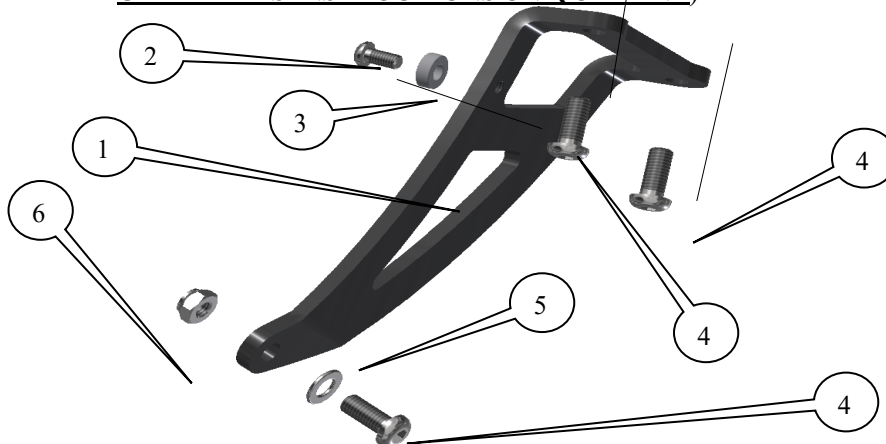
Page | 5



**Le kit contient les articles exposés ci-dessous, vérifier que toutes les pièces soient présentes avant de procéder au montage.**

**La façon dont le kit est emballé ne correspond pas forcément à la façon de monter les pièces sur la moto.**

**LES PARTIES PRESENTÉES PEUVENT ÊTRE UNIQUEMENT REPRESENTATIVES (POUR LA CLARTE DES INSTRUCTIONS UNIQUEMENT)**





EH0085

### **LÉGENDE**

- ARTICLE 1 = EXHAUST HANGER (HB0085) (x1).  
ARTICLE 2 = M6 x 12mm BOULON (x1).  
ARTICLE 3 = ENTRETOISE 5mm DE LARGE (S0834) (x1).  
ARTICLE 4 = M8 x 20mm BOULONS (x3).  
ARTICLE 5 = M8 RONDELLE (x1).  
ARTICLE 6 = M8 ÉCROU (x1).

Page | 6

### **OUTILS REQUIS**

- Clés Allen 4, 5 & 6mm.
- Clé à cliquet + douilles 10, 12 & 13mm Spanners.

Notez que si les kits sont emballés avec des rondelles en caoutchouc servant à tenir les composants, ces rondelles doivent être jetées !

### **NOTICE DE MONTAGE**

- Pour monter le support pot d'échappement R&G, le support de fixation de repose pied passager d'origine doit être enlevé.
- Pour cela, enlever les 2 boulons de fixation sur le haut du support de fixation de repose pied passager, voir photo 1.
- Enlever l'écrou de fixation d'échappement et le boulon (voir photos 2 et 3) puis enlever le support repose pied passage d'origine de la moto.
- Enlever le boulon de support de réservoir, voir photo 4, puis enlever le support visible sur la photo 5.
- Placer le boulon M6 (article 2) dans le support de fixation d'origine du réservoir, voir photo 6.
- Placer l'entretoise (article 3) sur l'extrémité du filetage, voir photo 6.
- Monter le support de réservoir sur le trou fileté du nouveau support (article 1), voir photos 6, 7 et 8.
- Monter l'ensemble en position puis fixer le support d'échappement sur le sous-cadre arrière en utilisant 2 boulons M8 (article 4), voir photo 8.
- Remonter puis fixer le réservoir en utilisant le boulon d'origine, voir photo 8.
- Placer la rondelle M8 (article 5) sur le boulon M8 restant (article 4), puis dans le trou inférieur du support d'échappement et du support de fixation d'échappement, puis fixer à l'aide de l'écrou (article 6), voir photos 9 et 10.
- Veiller à ce que le support de pot d'échappement soit correctement monté, avant de serrer tous les boulons.
- Veiller à ce qu'aucune partie de la moto ne puisse heurter d'autres parties de la moto lors de l'usage de la moto. (Cela est particulièrement important si le pot d'échappement n'est pas d'origine).



EH0085

*Il est de votre responsabilité de veiller à ce qu'aucune partie du support de pot d'échappement ne puisse entrer en contact avec d'autres parties de la moto. Ne pas utiliser la moto tant que ce point n'a pas été vérifié, en ayant compressé l'amortisseur arrière (si le design de la moto le permet).*

ISSUE 1 09/07/2018 (NSY)

Page | 7

#### CONSUMER NOTICE

The catalogue description and any exhibition of samples are only broad indications of the Products and R&G may make design changes which do not diminish their performance or visual appeal and supplying them in such state shall conform to the order. The Buyer acknowledges no representation or warranty (other than as to title) has been given or will apply to the Products other than those in R&G's order or confirmation and the Buyer confirms it has chosen the Products as being of merchantable quality and suitable for its particular purposes. Where R&G fits the Products or undertakes other services it shall exercise reasonable skill and care and rectify any fault free of charge unless the workmanship has been disturbed. The Buyer is responsible for ensuring that the warranty on the motorcycle is not affected by the fitting of the Products. On return of any defective Products R&G shall at its option either supply a replacement or refund the purchase money but shall not be liable if the Products have been modified or used or maintained otherwise than in accordance with R&G's or manufacturer's instructions and good engineering practice or if the defect arises from accident or neglect. Other than identified above and subject to R&G not limiting its liability for causing death and personal injury, it shall not be liable for indirect or consequential loss and otherwise its liability shall be limited to the amounts paid by the Buyer for the Products or the fitting or service concerned. These terms do not affect the Buyer's statutory rights.

#### R&G RACING RETURNS POLICY (NON-FAULTY GOODS)

Returns must be pre-authorised (if not pre-authorised the return will be rejected). Goods may only be returned direct to us if they were purchased direct from us (customer must prove if necessary). Otherwise to be returned to original vendor. Goods must be in re-sellable condition, in the opinion of R&G Racing. All returns are subject to a 25% restocking and handling fee (25% of the gross value exc. P&P – at the prevailing price at time of purchase). The customer must pay any and all carriage charges. No returns of discontinued products, unless within 14 days of purchase. This policy does not affect your statutory rights and does not refer to faulty goods.



EH0085

**MONTAGEANLEITUNG FÜR EH0085BK AUSPUFFHALTERUNG**  
**KAWASAKI NINJA 400/250 2018-**

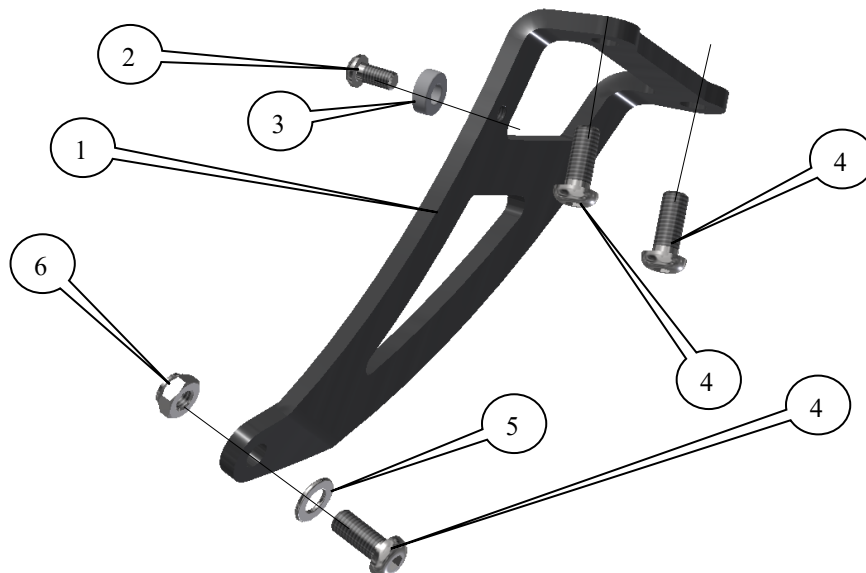
Page | 8



**ALLE KIT-TEILE SIND UNTEN ABGEBILDET UND GEKENNZEICHNET. BEVOR SIE MIT DER MONTAGE BEGINNEN, ÜBERPRÜFEN SIE, DASS ALLE TEILE VORHANDEN SIND.**

**Hinweis: Die Verpackung der Teile stellt nicht die Reihenfolge der Montage dar.**

**DIE UNTEN ABGEBILDETEN TEILE DIENEN LEDIGLICH ZUR ERKLÄRUNG**







EH0085

### **LIEFERUMFANG**

- ARTIKEL 1 = R&G AUSPUFFHALTERUNG (HB0085) (x1)
- ARTIKEL 2 = M6 x 12mm INBUSSCHRAUBE (x1)
- ARTIKEL 3 = DISTANZHALTER 5mm BREIT (S0834) (x1)
- ARTIKEL 4 = M8 x 20mm INBUSSCHRAUBE (x3)
- ARTIKEL 1 = M8 UNTERLEGSCHLEIBE (x1)
- ARTIKEL 5 = M8 SELBSTSICHERNDE MUTTER (x1)

Page | 9

### **SIE BENÖTIGEN FOLGENDES WERKZEUG**

- Satz Inbusschlüssel inkl. 4, 5 & 6mm Inbusschlüssel
- Satz Schraubenschlüssel mit 10, 12 & 13mm Schraubenschlüsseln

Hinweis für Kits mit Plastikunterlegscheiben an den Schrauben – *Diese Plastikunterlegscheiben werden nicht für den Einbau benötigt!*

### **MONTAGEANLEITUNG**

- Um die R&G Auspuffhalterung montieren zu können, müssen Sie die original Montagehalterung für die Beifahrer-Fußraste entfernen.
- Entfernen Sie daher die zwei Montageschrauben oben an den Montagehalterungen für die Beifahrer-Fußraste sowie die Schraube für den Flüssigkeitsbehälter – siehe Abbildung 1.
- Entfernen Sie die Montageschraube und Mutter für den Auspuff (in Abbildungen 2 und 3 gekennzeichnet), dann entfernen Sie die original Fußrastenhalterung für den Beifahrer vom Motorrad.
- Entfernen Sie die Schraube für die Flüssigkeitsbehälter-Halterung, die in Abbildung 4 markiert ist und entfernen Sie die Halterung, wie in Abbildung 5 abgebildet.
- Die M6 Inbusschraube (Artikel 2) in die Montagehalterung für den original Flüssigkeitsbehälter einführen, wie in Abbildung 6 abgebildet.
- Montieren Sie den Distanzhalter (Artikel 3) am hervorstehenden Gewinde – siehe Abbildung 6.
- Montieren Sie die Halterung für den Flüssigkeitsbehälter an der Gewindeöffnung in der neuen Auspuffhalterung (Artikel 1) wie in den Abbildungen 6, 7 und 8 abgebildet.
- Diese Einheit in Position bringen und die Auspuffhalterung mit den zwei M8 Schrauben (Artikel 4) am Hilfsrahmen befestigen – siehe Abbildung 8.
- Befestigen Sie den Flüssigkeitsbehälter mit der Originalschraube wieder – siehe Abbildung 8.
- Die M8 Unterlegscheibe (Artikel 5) an der übrigen M8 Schraube (Artikel 4) anbringen, dann die Schraube durch die untere Öffnung in der Auspuffhalterung und die Auspuffhalterung führen, und mit der selbstsichernden Mutter (Artikel 6) befestigen wie in den Abbildungen 9 und 10 abgebildet.
- Überprüfen Sie, dass die Auspuffhalterung ordnungsgemäß montiert ist, bevor Sie alle Schrauben festziehen.
- Bitte achten Sie darauf, dass keine Teile so angebaut werden, dass sie andere Teile des Motorrads beschädigen/berühren können (die ist besonders wichtig, wenn Sie einen Auspuff oder Endtopf aus dem Zubehörmarkt anbauen).



EH0085

***Wichtiger Hinweis: Es obliegt Ihrer Verantwortung sicherzustellen, dass keine Teile der Auspuffhalterung oder Auspuffanlage mit anderen Teilen des Motorrades in Berührung kommen und/oder sie beschädigen. Fahren Sie nicht mit dem Motorrad bis dies sorgfältig überprüft wurde und Sie den hinteren Federweg genau kontrolliert haben (falls zutreffend, Modellabhängig).***

Page | 10

AUSGABE 1 09/07/2018 (NSY)

**CONSUMER NOTICE**

The catalogue description and any exhibition of samples are only broad indications of the Products and R&G may make design changes which do not diminish their performance or visual appeal and supplying them in such state shall conform to the order. The Buyer acknowledges no representation or warranty (other than as to title) has been given or will apply to the Products other than those in R&G's order or confirmation and the Buyer confirms it has chosen the Products as being of merchantable quality and suitable for its particular purposes. Where R&G fits the Products or undertakes other services it shall exercise reasonable skill and care and rectify any fault free of charge unless the workmanship has been disturbed. The Buyer is responsible for ensuring that the warranty on the motorcycle is not affected by the fitting of the Products. On return of any defective Products R&G shall at its option either supply a replacement or refund the purchase money but shall not be liable if the Products have been modified or used or maintained otherwise than in accordance with R&G's or manufacturer's instructions and good engineering practice or if the defect arises from accident or neglect. Other than identified above and subject to R&G not limiting its liability for causing death and personal injury, it shall not be liable for indirect or consequential loss and otherwise its liability shall be limited to the amounts paid by the Buyer for the Products or the fitting or service concerned. These terms do not affect the Buyer's statutory rights.

**R&G RACING RETURNS POLICY (NON-FAULTY GOODS)**

Returns must be pre-authorized (if not pre-authorized the return will be rejected). Goods may only be returned direct to us if they were purchased direct from us (customer must prove if necessary). Otherwise to be returned to original vendor. Goods must be in re-sellable condition, in the opinion of R&G Racing. All returns are subject to a 25% restocking and handling fee (25% of the gross value exc. P&P - at the prevailing price at time of purchase). The customer must pay any and all carriage charges. No returns of discontinued products, unless within 14 days of purchase. This policy does not affect your statutory rights and does not refer to faulty goods.



BLP0084

**FITTING INSTRUCTIONS FOR BLP0084BK REAR FOOTREST BLANKING**

**PLATE**

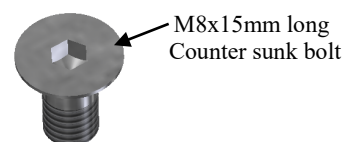
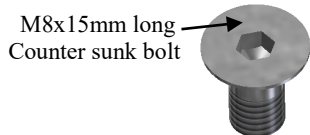
**KAWASAKI NINJA 250/400 2018-**



**Please note that the way the kit is packed does not necessarily represent the way of mounting to the bike**

THE PARTS SHOWN MAY BE REPRESENTATIVE ONLY (FOR CLARITY OF INSTRUCTIONS ONLY)

Please note that in cases where kits are packed with rubber washers holding the components onto the bolt – *the rubber washers should be thrown away!*



**TOOLS REQUIRED**

- 5 and 6mm A/F metric Allen key.

**FITTING INSTRUCTIONS**

- Remove rear footrest on the left side of the bike.
- Fit the two counter-sunk head bolts through the holes in the blanking plate.
- Offer assembly up to bike and engage both bolts as shown in top picture.
- Tighten evenly using 5mm Allen key.

ISSUE 1 30/05/2018 (NSY)

Racing Technique Ltd T/A R&G

Unit 1, Shelley's Lane, East Worldham, Alton, Hampshire, GU34 3AQ

Tel: +44 (0)1420 89007 Fax: +44 (0)1420 87301 [www.rg-racing.com](http://www.rg-racing.com) Email: [info@rg-racing.com](mailto:info@rg-racing.com)



BLP0084

#### **CONSUMER NOTICE**

The catalogue description and any exhibition of samples are only broad indications of the Products and R&G may make design changes which do not diminish their performance or visual appeal and supplying them in such state shall conform to the order. The Buyer acknowledges no representation or warranty (other than as to title) has been given or will apply to the Products other than those in R&G's order or confirmation and the Buyer confirms it has chosen the Products as being of merchantable quality and suitable for its particular purposes. Where R&G fits the Products or undertakes other services it shall exercise reasonable skill and care and rectify any fault free of charge unless the workmanship has been disturbed. The Buyer is responsible for ensuring that the warranty on the motorcycle is not affected by the fitting of the Products. On return of any defective Products R&G shall at its option either supply a replacement or refund the purchase money but shall not be liable if the Products have been modified or used or maintained otherwise than in accordance with R&G's or manufacturer's instructions and good engineering practice or if the defect arises from accident or neglect. Other than identified above and subject to R&G not limiting its liability for causing death and personal injury, it shall not be liable for indirect or consequential loss and otherwise its liability shall be limited to the amounts paid by the Buyer for the Products or the fitting or service concerned. These terms do not affect the Buyer's statutory rights.

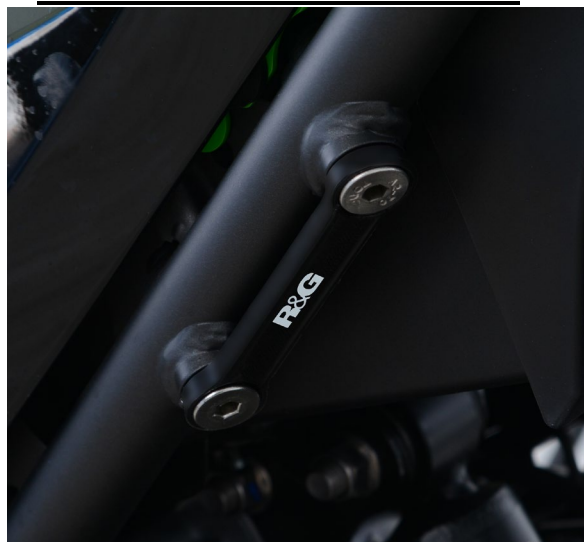
#### **R&G RETURNS POLICY (NON-FAULTY GOODS)**

Returns must be pre-authorised (if not pre-authorised the return will be rejected). Goods may only be returned direct to us if they were purchased direct from us (customer must prove if necessary). Otherwise to be returned to original vendor. Goods must be in re-sellable condition, in the opinion of R&G. All returns are subject to a 25% restocking and handling fee (25% of the gross value exc. P&P – at the prevailing price at time of purchase). The customer must pay any and all carriage charges. No returns of discontinued products, unless within 14 days of purchase. This policy does not affect your statutory rights and does not refer to faulty goods.



BLP0084

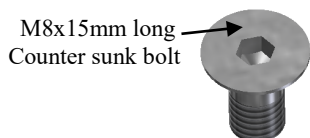
**NOTICE DE MONTAGE POUR BLP0084BK PLAQUE D'OBTURATION DU  
REPOSE PIED ARRIERE  
KAWASAKI NINJA 250/400 2018-**



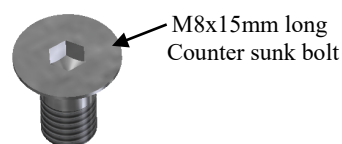
**La façon dont le kit est emballé ne correspond pas forcément à la façon de monter les pièces sur la moto.**

**LES PARTIES PRESENTEES PEUVENT ETRE UNIQUEMENT REPRESENTATIVES (POUR LA CLARTE DES INSTRUCTIONS UNIQUEMENT).**

**Notez que si les kits sont emballés avec des rondelles en caoutchouc servant à tenir les composants, ces rondelles doivent être jetées !**



M8x15mm long  
Counter sunk bolt



M8x15mm long  
Counter sunk bolt



**OUTILS REQUIS**

- Clés Allen 5 et 6mm.

**NOTICE DE MONTAGE**

- Enlever le repose pied arrière du côté gauche de la moto.
- Insérer les 2 boulons dans les trous de la plaque d'obturation.
- Monter l'ensemble sur la moto puis engager les 2 boulons comme sur la photo du haut.
- Serrer de façon égale à l'aide d'une clé Allen 5mm.



BLP0084

ISSUE 1 30/05/2018 (NSY)

#### **CONSUMER NOTICE**

The catalogue description and any exhibition of samples are only broad indications of the Products and R&G may make design changes which do not diminish their performance or visual appeal and supplying them in such state shall conform to the order. The Buyer acknowledges no representation or warranty (other than as to title) has been given or will apply to the Products other than those in R&G's order or confirmation and the Buyer confirms it has chosen the Products as being of merchantable quality and suitable for its particular purposes. Where R&G fits the Products or undertakes other services it shall exercise reasonable skill and care and rectify any fault free of charge unless the workmanship has been disturbed. The Buyer is responsible for ensuring that the warranty on the motorcycle is not affected by the fitting of the Products. On return of any defective Products R&G shall at its option either supply a replacement or refund the purchase money but shall not be liable if the Products have been modified or used or maintained otherwise than in accordance with R&G's or manufacturer's instructions and good engineering practice or if the defect arises from accident or neglect. Other than identified above and subject to R&G not limiting its liability for causing death and personal injury, it shall not be liable for indirect or consequential loss and otherwise its liability shall be limited to the amounts paid by the Buyer for the Products or the fitting or service concerned. These terms do not affect the Buyer's statutory rights.

#### **R&G RETURNS POLICY (NON-FAULTY GOODS)**

Returns must be pre-authorized (if not pre-authorized the return will be rejected). Goods may only be returned direct to us if they were purchased direct from us (customer must prove if necessary). Otherwise to be returned to original vendor. Goods must be in re-sellable condition, in the opinion of R&G. All returns are subject to a 25% restocking and handling fee (25% of the gross value exc. P&P – at the prevailing price at time of purchase). The customer must pay any and all carriage charges. No returns of discontinued products, unless within 14 days of purchase. This policy does not affect your statutory rights and does not refer to faulty goods.



BLP0084

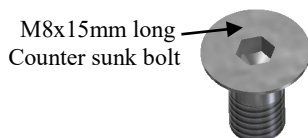
**MONTAGEANLEITUNG FÜR BLP0084BK**  
**ABDECKPLATTE FÜR DIE HINTERE FUSSRASTE**  
**KAWASAKI NINJA 250/400 2018-**



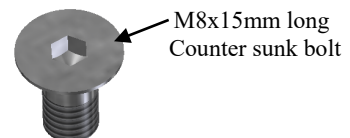
**Hinweis: Die Verpackung der Teile stellt nicht die Reihenfolge der Montage dar.**

DIE ABGEBILDETEN TEILE DIENEN LEDIGLICH ZUR ERKLÄRUNG.

Hinweis für Kits mit Plastikunterlegscheiben an den Schrauben – *Diese Plastikunterlegscheiben werden nicht für den Einbau benötigt!*



M8x15mm long  
Counter sunk bolt



M8x15mm long  
Counter sunk bolt



BLP0084

**SIE BENÖTIGEN FOLGENDES WERKZEUG**

- 5 und 6mm A/F Inbusschlüssel

**MONTAGEANLEITUNG**

- Entfernen Sie die hintere Fußraste an der linken Seite (in Fahrtrichtung) des Motorrads.
- Montieren Sie die zwei Senkschrauben an den Öffnungen an der Abdeckplatte.
- Die Einheit ans Motorrad ansetzen und beide Schrauben wie oben abgebildet anbringen.
- Benutzen Sie einen 5mm Inbusschlüssel, um alles gleichmäßig festzuziehen.

AUSGABE 1 30/05/2018 (NSY)

Racing Technique Ltd T/A R&G

Unit 1, Shelley's Lane, East Worldham, Alton, Hampshire, GU34 3AQ

Tel: +44 (0)1420 89007 Fax: +44 (0)1420 87301 [www.rg-racing.com](http://www.rg-racing.com) Email: [info@rg-racing.com](mailto:info@rg-racing.com)



BLP0084

#### **CONSUMER NOTICE**

The catalogue description and any exhibition of samples are only broad indications of the Products and R&G may make design changes which do not diminish their performance or visual appeal and supplying them in such state shall conform to the order. The Buyer acknowledges no representation or warranty (other than as to title) has been given or will apply to the Products other than those in R&G's order or confirmation and the Buyer confirms it has chosen the Products as being of merchantable quality and suitable for its particular purposes. Where R&G fits the Products or undertakes other services it shall exercise reasonable skill and care and rectify any fault free of charge unless the workmanship has been disturbed. The Buyer is responsible for ensuring that the warranty on the motorcycle is not affected by the fitting of the Products. On return of any defective Products R&G shall at its option either supply a replacement or refund the purchase money but shall not be liable if the Products have been modified or used or maintained otherwise than in accordance with R&G's or manufacturer's instructions and good engineering practice or if the defect arises from accident or neglect. Other than identified above and subject to R&G not limiting its liability for causing death and personal injury, it shall not be liable for indirect or consequential loss and otherwise its liability shall be limited to the amounts paid by the Buyer for the Products or the fitting or service concerned. These terms do not affect the Buyer's statutory rights.

#### **R&G RETURNS POLICY (NON-FAULTY GOODS)**

Returns must be pre-authorized (if not pre-authorized the return will be rejected). Goods may only be returned direct to us if they were purchased direct from us (customer must prove if necessary). Otherwise to be returned to original vendor. Goods must be in re-sellable condition, in the opinion of R&G. All returns are subject to a 25% restocking and handling fee (25% of the gross value exc. P&P – at the prevailing price at time of purchase). The customer must pay any and all carriage charges. No returns of discontinued products, unless within 14 days of purchase. This policy does not affect your statutory rights and does not refer to faulty goods.