



**FITTING INSTRUCTIONS FOR ECC0283 RHS ENGINE CASE COVER
FOR YAMAHA YZF-R125 2014-19**



THIS KIT CONTAINS THE ITEMS PICTURED AND LABELLED OVER PAGE.

SOME PARTS MAY BE SHOWN FOR CLARITY OF INSTRUCTIONS ONLY.

DO NOT PROCEED UNTIL YOU ARE SURE ALL PARTS ARE PRESENT.

PLEASE READ ALL INSTRUCTIONS BEFORE PROCEEDING.

**IF IN ANY DOUBT WHEN FITTING OUR PRODUCTS, CONSULT ONE OF
OUR DEALERS OR HAVE FITTED BY A QUALIFIED TECHNICIAN.**

PLEASE NOTE THAT THE WAY THE KIT IS PACKED DOES NOT NECESSARILY REPRESENT THE
WAY OF MOUNTING TO THE BIKE.

IN THE EVENT OF RUBBER WASHERS BEING USED TO HOLD COMPONENTS ONTO BOLTS,
THESE RUBBER WASHERS CAN BE THROWN AWAY.

DIGITAL COPIES OF THESE INSTRUCTIONS ARE AVAILABLE FROM:

WWW.RG-RACING.COM



<u>TOOLS REQUIRED</u>	<u>GENERAL TORQUE SETTINGS</u>
<ul style="list-style-type: none"> • Set of Metric Allen keys. • Metric Socket set. • Suitable Torque Wrench. 	<p>M4 BOLT = 8Nm M5 BOLT = 12Nm M6 BOLT = 15Nm M8 BOLT = 20Nm M10 BOLT = 40Nm M12 BOLT = 40Nm</p>

LEGEND

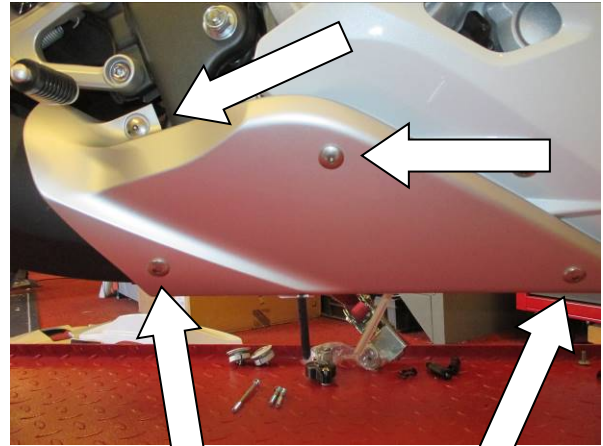
ITEM NO.	DESCRIPTION	QTY
ITEM 1	R&G ENGINE CASE COVER WITH SPACERS FITTED (ECC0283)	1
ITEM 2	M6 x 65mm LONG CAP HEAD BOLTS	3



PICTURE 1



Picture 2



Picture 3



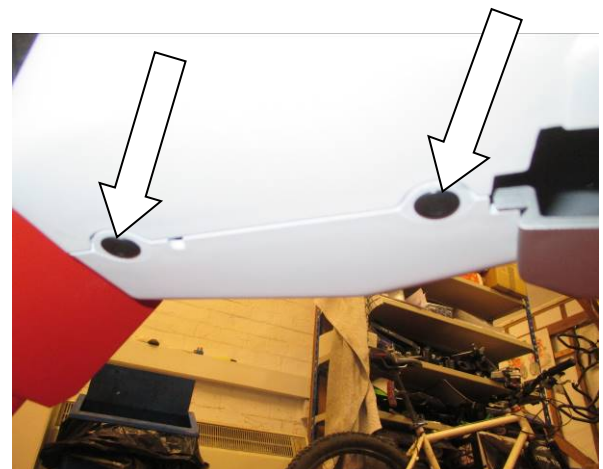
Picture 4



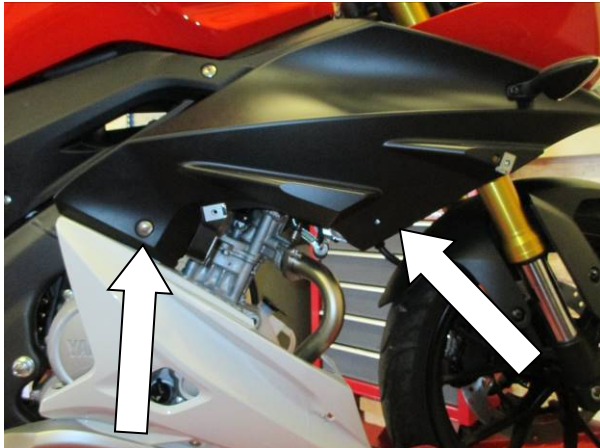
Picture 5



Picture 6



Picture 7



Picture 8



Picture 9



Picture 10



Picture 11

FITTING INSTRUCTIONS

- Please make sure the engine is cold before proceeding with the fitting of the R&G cover.
- To fit the R&G Engine Case Cover, the fairing needs to be removed. To do this, start by removing the three bolts shown and arrowed in **picture 2** and remove the side fairing from the bike.
- Remove the four bolts that mount the lower fairing in place, as arrowed in **picture 3**, before removing from the bike.
- Remove the two bolts that secure the black side infill panel in place, as shown in **picture 4**. Once removed, this part can be rotated outwards and clear of the side of the tank (it will still be attached underneath the seat).
- Remove the two bolts shown in **pictures 5 & 6** and the two push rivets on the underside, as shown in **picture 7** that attach the white internal panel in place.
- Remove the two bolts that are shown in **picture 8** on the black plastic piece, in order to access below the panel.

R&G

Unit 1, Shelley's Lane, East Worldham, Alton, Hampshire, GU34 3AQ

Tel: +44 (0)1420 89007 Fax: +44 (0)1420 87301 www.rg-racing.com Email: info@rg-racing.com



- Carefully pull the rear of the panel outwards to gain access to a push rivet that fits the white internal panel to the mounting bracket, as shown in **picture 9**. Remove this push rivet and the white internal panel can come clear of the bike.
- The engine case can now be clearly accessed.
- Remove the oil filler cap from the case as shown in **picture 10**.
- To fit the R&G engine case cover remove the three M6 engine case bolts in the positions arrowed in **picture 1**. Hold the cover loosely over the case to help identify the correct ones. **DO NOT REMOVE ALL OF THE CASE BOLTS**.
- Offer up the R&G cover to the engine and carefully fit it over the casing. Ensure that the three R&G bolts are lined up with the holes in the engine casing, and then push on as far as it will go as shown in **picture 11**.
- Fit the bolts through the Engine Case Cover and into the engine case.
- With a 5mm Allen key tighten the bolts equally so that they pull the cover into place. **DO NOT FULLY TIGHTEN**.
- Finally use a torque wrench set at 10 N/m (7 Lb/ft) to fully tighten.
- Re-fit the oil filler cap.
- Re-fit the fairings in a reverse procedure of how they were removed.
- It is suggested that you check the tightness of the mounting bolts on a regular basis i.e., when cleaning or once a month.
- NOTE for the cleaning of this product you should only use a soft polishing cloth and a mild general cleaning agent.
- **AVOID HARMFUL CHEMICALS. IF IN DOUBT DO NOT USE AS THEY COULD ALTER THE STRENGTH OF THE COVER.**
- R&G will accept no liability if the above procedure and torque settings are not followed.

ISSUE 1 19/08/2021 (NSY)

CONSUMER NOTICE

The catalogue description and any exhibition of samples are only broad indications of the Products and R&G may make design changes which do not diminish their performance or visual appeal and supplying them in such state shall conform to the order. The Buyer acknowledges no representation or warranty (other than as to title) has been given or will apply to the Products other than those in R&G's order or confirmation and the Buyer confirms it has chosen the Products as being of merchantable quality and suitable for its particular purposes. Where R&G fits the Products or undertakes other services it shall exercise reasonable skill and care and rectify any fault free of charge unless the workmanship has been disturbed. The Buyer is responsible for ensuring that the warranty on the motorcycle is not affected by the fitting of the Products. On return of any defective Products R&G shall at its option either supply a replacement or refund the purchase money but shall not be liable if the Products have been modified or used or maintained otherwise than in accordance with R&G's or manufacturer's instructions and good engineering practice or if the defect arises from accident or neglect. Other than identified above and subject to R&G not limiting its liability for causing death and personal injury, it shall not be liable for indirect or consequential loss and otherwise its liability shall be limited to the amounts paid by the Buyer for the Products or the fitting or service concerned. These terms do not affect the Buyer's statutory rights.

R&G RETURNS POLICY (NON-FAULTY GOODS)

Returns must be pre-authorized (if not pre-authorized the return will be rejected). Goods may only be returned direct to us if they were purchased direct from us (customer must prove if necessary). Otherwise to be returned to original vendor. Goods must be in re-sellable condition, in the opinion of R&G. All returns are subject to a 25% restocking and handling fee (25% of the gross value exc. P&P - at the prevailing price at time of purchase). The customer must pay any and all carriage charges. No returns of discontinued products, unless within 14 days of purchase. This policy does not affect your statutory rights and does not refer to faulty goods.

R&G

Unit 1, Shelley's Lane, East Worldham, Alton, Hampshire, GU34 3AQ

Tel: +44 (0)1420 89007 Fax: +44 (0)1420 87301 www.rg-racing.com Email: info@rg-racing.com



NOTICE DE MONTAGE POUR ECC0283
PROTECTION CARTER CÔTÉ DROIT
POUR YAMAHA YZF-R125 2014-19



CE KIT CONTIENT LES ARTICLES ILLUSTRÉS ET ÉTIQUETÉS SUR LA PAGE.

CERTAINES PARTIES PEUVENT ÊTRE PRÉSENTES UNIQUEMENT POUR LA CLARTÉ DES
INSTRUCTIONS.

NE PAS PROCÉDER AU MONTAGE TANT QUE VOUS N'ÊTES PAS SÛR QUE TOUTES LES PIÈCES
SOIENT PRÉSENTES.

VEUILLEZ LIRE TOUTES LES INSTRUCTIONS AVANT DE CONTINUER.

**EN CAS DE DOUTE LORS DU MONTAGE DE NOS PRODUITS, CONSULTEZ
UN DE NOS REVENDUEURS OU FAITES APPEL À UN TECHNICIEN
QUALIFIÉ.**

VEUILLEZ NOTER QUE LA FAÇON DONT LE KIT EST EMBALLÉ NE REPRÉSENTE PAS
NECESSAIREMENT LA MANIÈRE DE LE MONTER SUR LA MOTO.

SI DES RONDELLES EN CAOUTCHOUC SONT UTILISÉES POUR MAINTENIR LES COMPOSANTS
SUR LES BOULONS, ELLES PEUVENT ÊTRE JETÉES.

NOTICE DISPONIBLE AU TÉLÉCHARGEMENT SUR :

WWW.RG-RACING.COM

R&G

Unit 1, Shelley's Lane, East Worldham, Alton, Hampshire, GU34 3AQ
Tel: +44 (0)1420 89007 Fax: +44 (0)1420 87301 www.rg-racing.com Email: info@rg-racing.com



<u>OUTILS REQUIS</u>	<u>VALEURS DE SERRAGE</u>
<ul style="list-style-type: none"> • Clés Allen. • Clé métrique. • Clé dynamométrique. 	M4 BOULON = 8Nm M5 BOULON = 12Nm M6 BOULON = 15Nm M8 BOULON = 20Nm M10 BOULON = 40Nm M12 BOULON = 40Nm

LÉGENDE

ARTICLE NO.	DESCRIPTION	QTÉ
ARTICLE 1	PROTECTION CARTER MOTEUR R&G AVEC ENTRETOISES MONTÉES (ECC0283)	1
ARTICLE 2	M6 x 65mm BOULONS	3

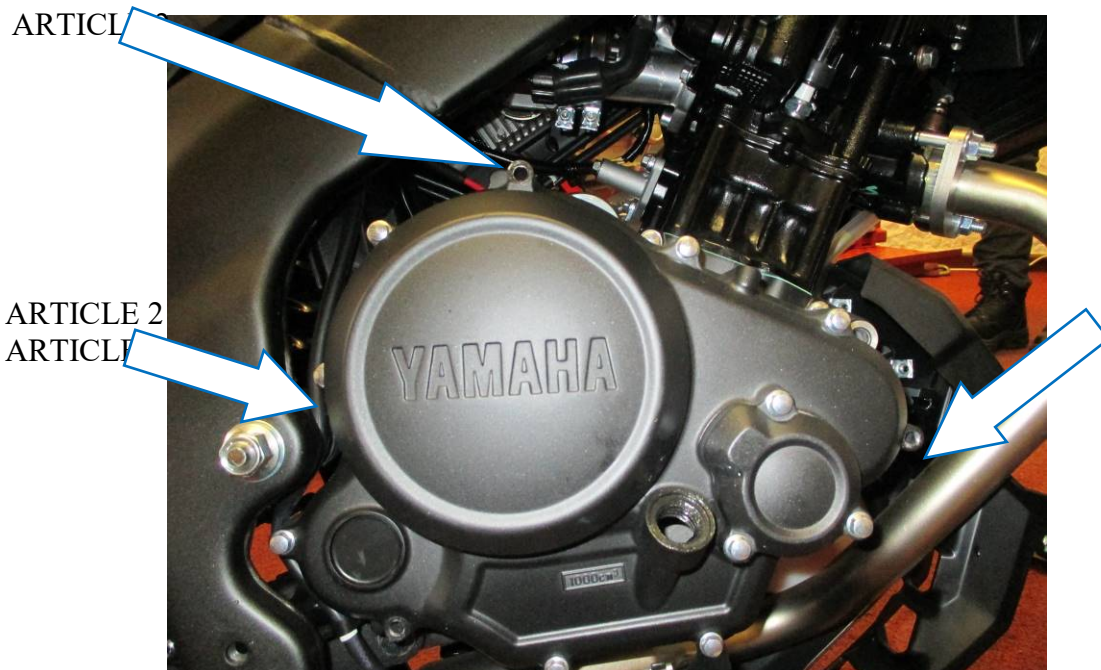


PHOTO 1



Photo 2

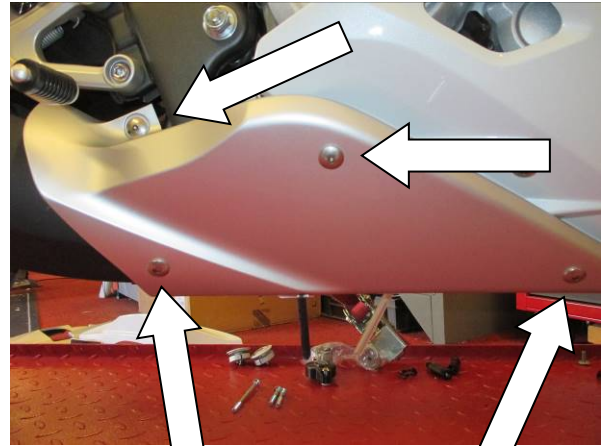


Photo 3



Photo 4

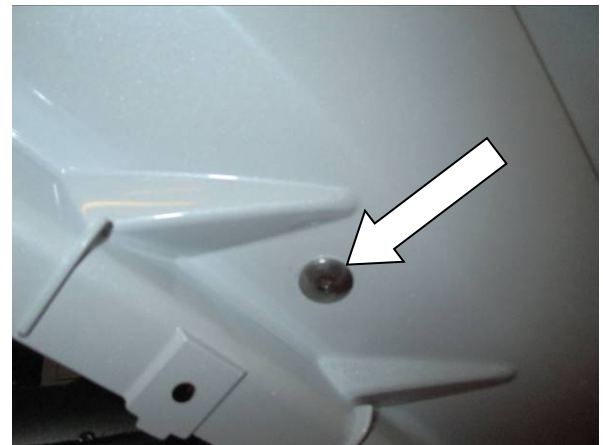


Photo 5



Photo 6

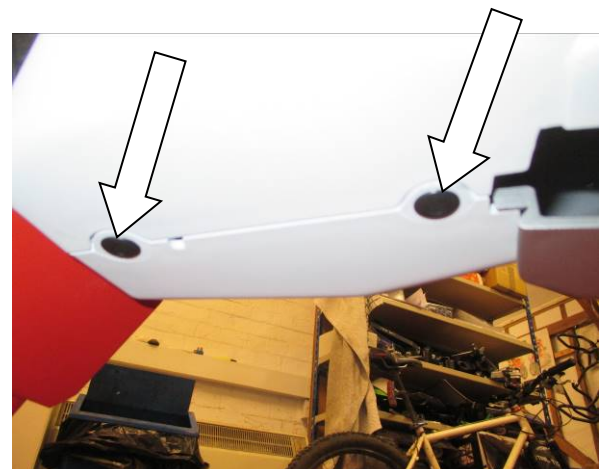


Photo 7

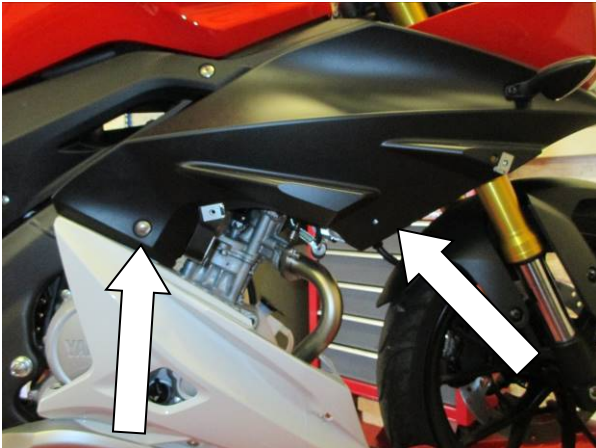


Photo 8



Photo 9



Photo 10



Photo 11

NOTICE DE MONTAGE

- Veuillez-vous assurer que le moteur soit froid avant de procéder au montage de la protection R&G.
- Pour installer la protection carter moteur R&G, le carénage doit être retiré. Pour ce faire, commencez par retirer les trois boulons indiqués et fléchés sur la photo 2 et retirez le carénage latéral de la moto.
- Retirez les quatre boulons qui fixent le carénage inférieur en place, comme indiqué sur la photo 3, avant de le retirer de la moto.
- Retirez les deux boulons qui fixent le panneau latéral noir en place, comme indiqué sur la photo 4. Une fois retirée, cette partie peut être tournée vers l'extérieur et dégagée du côté du réservoir (elle sera toujours fixée sous le siège).
- Retirez les deux boulons montrés sur les photos 5 et 6 et les deux rivets du dessous, comme montré sur la photo 7, qui fixent le panneau interne blanc en place.

R&G

Unit 1, Shelley's Lane, East Worldham, Alton, Hampshire, GU34 3AQ
 Tel: +44 (0)1420 89007 Fax: +44 (0)1420 87301 www.rg-racing.com Email: info@rg-racing.com



- Retirez les deux boulons illustrés à la photo 8 sur la pièce en plastique noir, afin d'accéder au-dessous du panneau.
- Tirez délicatement l'arrière du panneau vers l'extérieur pour accéder à un rivet qui ajuste le panneau interne blanc au support de montage, comme indiqué sur la photo 9. Retirez ce rivet poussoir et le panneau interne blanc peut se dégager de la moto.
- Le carter moteur est désormais clairement accessible.
- Retirez le bouchon de remplissage d'huile du carter comme indiqué sur la photo 10.
- Pour installer le couvercle du carter moteur R&G, retirez les trois boulons du carter moteur M6 dans les positions fléchées sur la photo 1. Tenez le couvercle sans serrer sur le carter pour aider à identifier les bons trous. **NE RETIREZ PAS TOUS LES BOULONS DU CARTER.**
- Présentez le couvercle R&G sur le moteur et placez-le soigneusement sur le carter. Assurez-vous que les trois boulons R&G soient alignés avec les trous dans le carter moteur, puis poussez aussi loin que possible comme indiqué sur la photo 11.
- Insérez les boulons à travers le couvercle du carter du moteur et dans le carter du moteur.
- À l'aide d'une clé Allen de 5 mm, serrez les boulons de manière égale afin qu'ils tirent la protection en place. **NE PAS SERRER COMPLÈTEMENT.**
- Enfin, utilisez une clé dynamométrique réglée à 10 N/m (7 Lb/ft) pour serrer complètement.
- Remonter le bouchon de remplissage d'huile.
- Remonter les carénages en procédant dans le sens inverse de la dépose.
- Il est suggéré de vérifier régulièrement le serrage des boulons de fixation, c'est-à-dire lors du nettoyage ou une fois par mois.
- NOTE : Pour le nettoyage de ce produit, vous ne devez utiliser qu'un chiffon de polissage doux et un agent de nettoyage général doux.
- **ÉVITER LES PRODUITS CHIMIQUES NOCIFS. EN CAS DE DOUTE, NE PAS UTILISER CAR ILS POURRAIENT ALTRÉRER LA RÉSISTANCE DE LA PROTECTION.**
- R&G n'acceptera aucune responsabilité si les procédures ci-dessus et le réglage du couple ne sont pas suivis.

ISSUE 1 19/08/2021 (NSY)

CONSUMER NOTICE

The catalogue description and any exhibition of samples are only broad indications of the Products and R&G may make design changes which do not diminish their performance or visual appeal and supplying them in such state shall conform to the order. The Buyer acknowledges no representation or warranty (other than as to title) has been given or will apply to the Products other than those in R&G's order or confirmation and the Buyer confirms it has chosen the Products as being of merchantable quality and suitable for its particular purposes. Where R&G fits the Products or undertakes other services it shall exercise reasonable skill and care and rectify any fault free of charge unless the workmanship has been disturbed. The Buyer is responsible for ensuring that the warranty on the motorcycle is not affected by the fitting of the Products. On return of any defective Products R&G shall at its option either supply a replacement or refund the purchase money but shall not be liable if the Products have been modified or used or maintained otherwise than in accordance with R&G's or manufacturer's instructions and good engineering practice or if the defect arises from accident or neglect. Other than identified above and subject to R&G not limiting its liability for causing death and personal injury, it shall not be liable for indirect or consequential loss and otherwise its liability shall be limited to the amounts paid by the Buyer for the Products or the fitting or service concerned. These terms do not affect the Buyer's statutory rights.

R&G

Unit 1, Shelley's Lane, East Worldham, Alton, Hampshire, GU34 3AQ
Tel: +44 (0)1420 89007 Fax: +44 (0)1420 87301 www.rg-racing.com Email: info@rg-racing.com



R&G RETURNS POLICY (NON-FAULTY GOODS)

Returns must be pre-authorized (if not pre-authorized the return will be rejected). Goods may only be returned direct to us if they were purchased direct from us (customer must prove if necessary). Otherwise to be returned to original vendor. Goods must be in re-sellable condition, in the opinion of R&G. All returns are subject to a 25% restocking and handling fee (25% of the gross value exc. P&P – at the prevailing price at time of purchase). The customer must pay any and all carriage charges. No returns of discontinued products, unless within 14 days of purchase. This policy does not affect your statutory rights and does not refer to faulty goods.

R&G

Unit 1, Shelley's Lane, East Worldham, Alton, Hampshire, GU34 3AQ
Tel: +44 (0)1420 89007 Fax: +44 (0)1420 87301 www.rg-racing.com Email: info@rg-racing.com