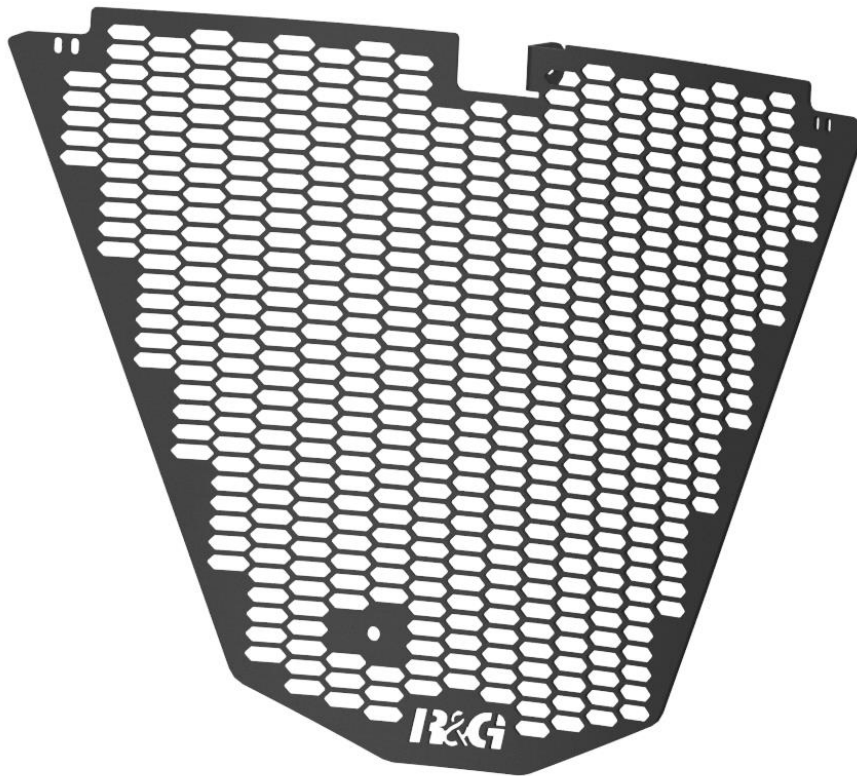




**FITTING INSTRUCTIONS FOR DG0060PRO**



**THIS KIT CONTAINS THE ITEMS PICTURED AND LABELLED OVER PAGE.**

SOME PARTS MAY BE SHOWN FOR CLARITY OF INSTRUCTIONS ONLY.

DO NOT PROCEED UNTIL YOU ARE SURE ALL PARTS ARE PRESENT.

**PLEASE READ ALL INSTRUCTIONS BEFORE PROCEEDING.**

**IF IN ANY DOUBT WHEN FITTING OUR PRODUCTS, CONSULT ONE OF OUR DEALERS  
OR HAVE FITTED BY A QUALIFIED TECHNICIAN.**

PLEASE NOTE THAT THE WAY THE KIT IS PACKED DOES NOT NECESSARILY REPRESENT THE WAY OF  
MOUNTING TO THE BIKE.

IN THE EVENT OF RUBBER WASHERS BEING USED TO HOLD COMPONENTS ONTO BOLTS,  
THESE RUBBER WASHERS CAN BE THROWN AWAY.

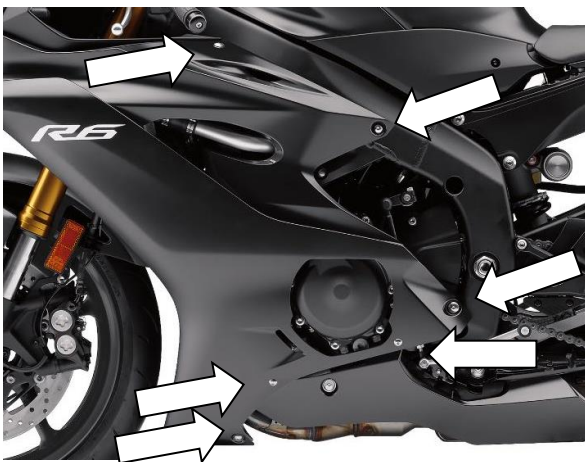


<b><u>TOOLS REQUIRED</u></b>	<b><u>GENERAL TORQUE SETTINGS</u></b>
<ul style="list-style-type: none"> <li>• SET OF ALLEN KEYS</li> <li>• SET OF METRIC SPANNERS</li> <li>• SMALL HEX BIT RATCHET WITH PHILIPS BIT ATTACHMENT</li> </ul>	M4 BOLT = 8Nm M5 BOLT = 12Nm M6 BOLT = 15Nm M8 BOLT = 20Nm M10 BOLT = 40Nm M12 BOLT = 40Nm

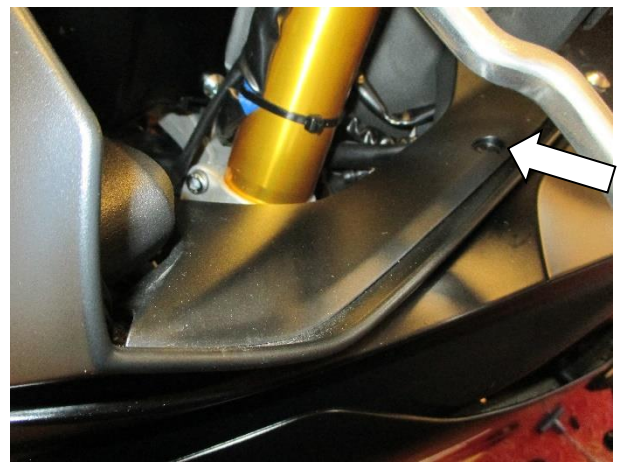
### **LEGEND**

<b>ITEM NO.</b>	<b>DESCRIPTION</b>	<b>QTY</b>
ITEM 1	DG0060PRO (DOWNPIPE GRILLE COMPONENT)	1
ITEM 2	CABLE TIES	2

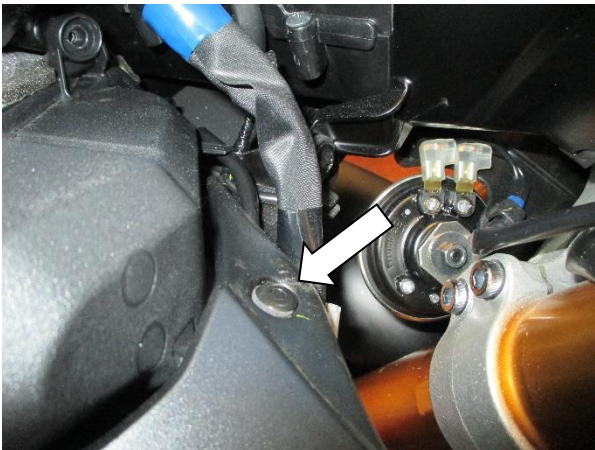
### **FITTING PICTURES**



Picture 1



Picture 2



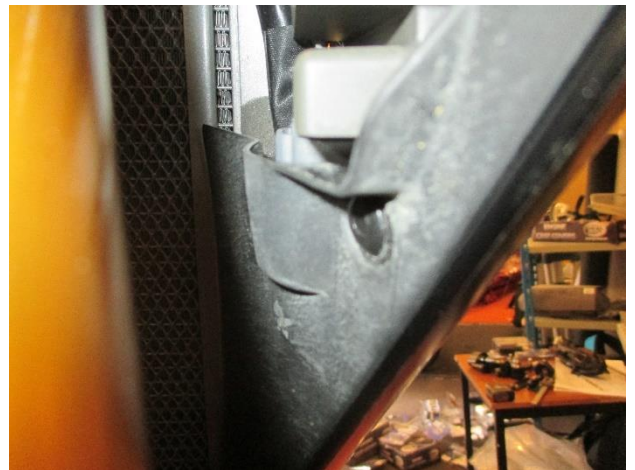
Picture 3



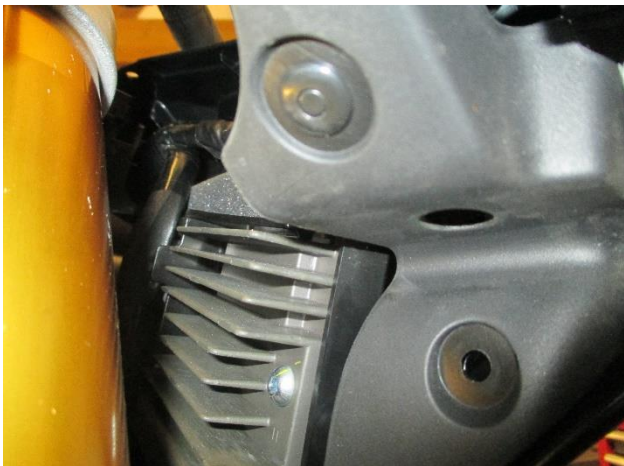
Picture 4



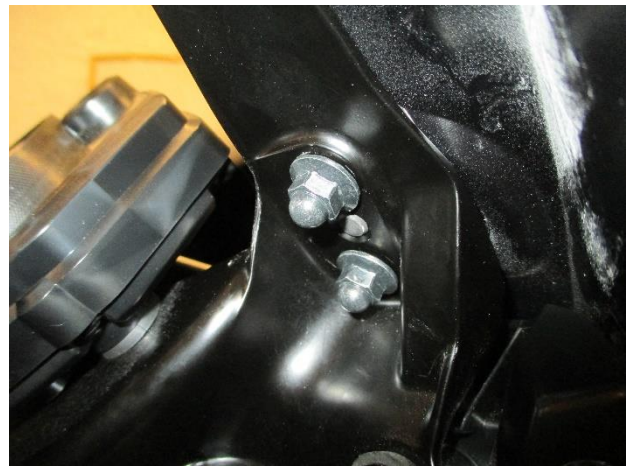
Picture 5



Picture 6



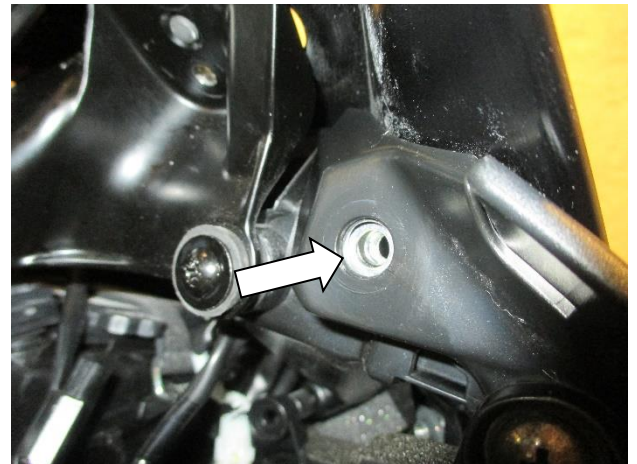
Picture 7



Picture 8



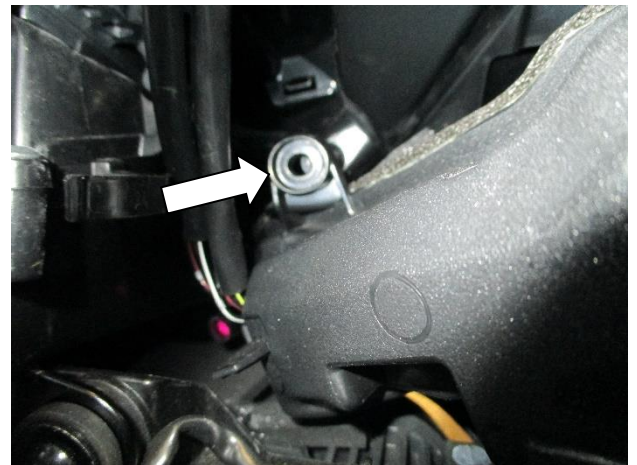
Picture 9



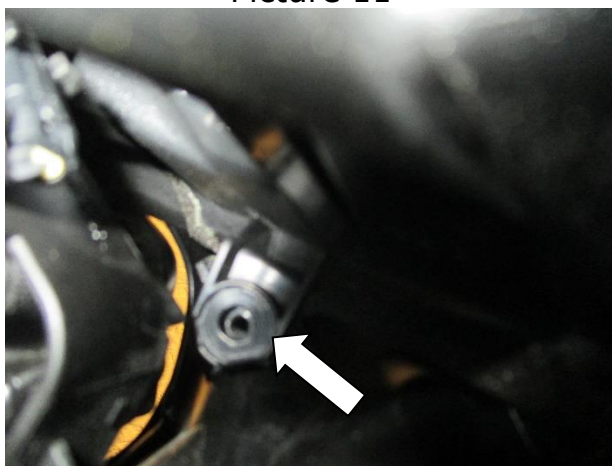
Picture 10



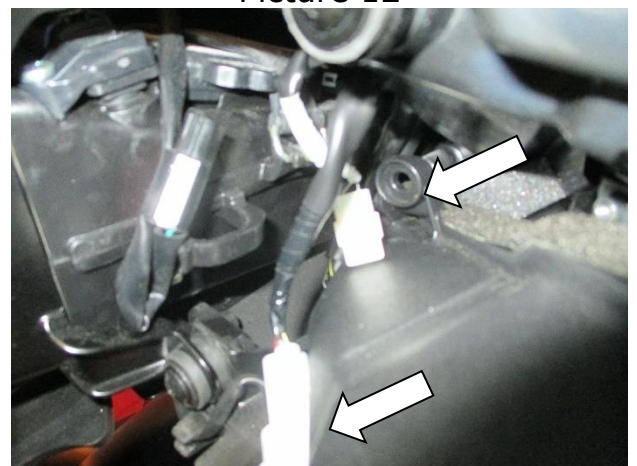
Picture 11



Picture 12



Picture 13



Picture 14



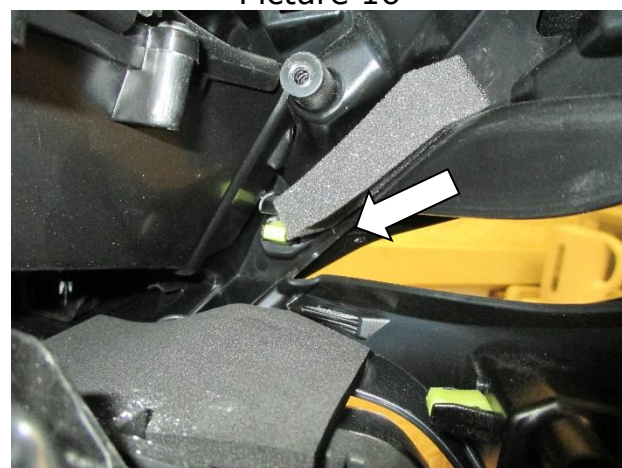
Picture 15



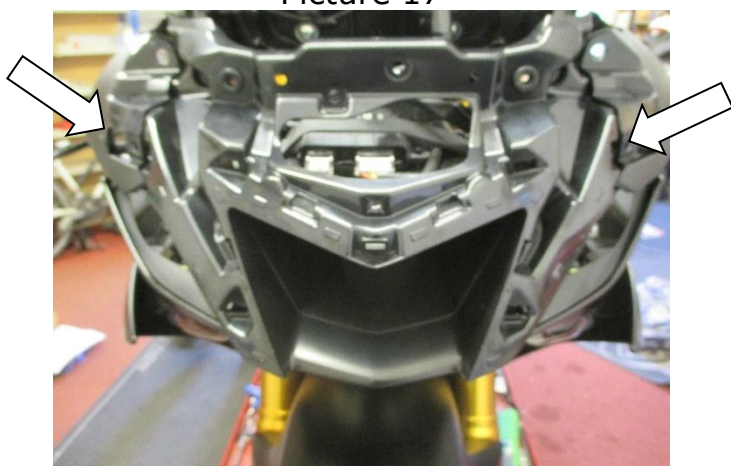
Picture 16



Picture 17



Picture 18



Picture 19



Picture 20



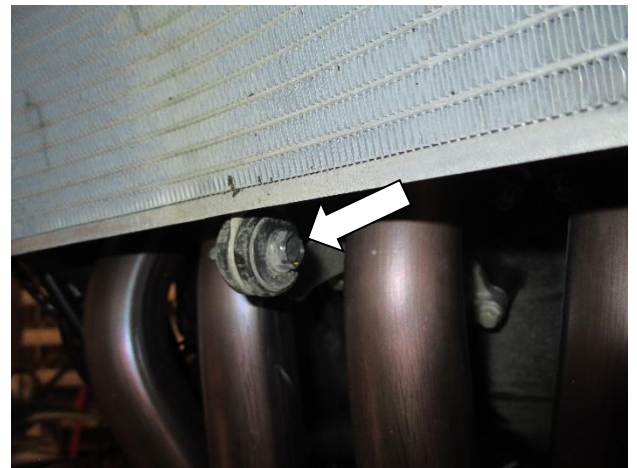
Picture 21



Picture 22



Picture 23



Picture 24



Picture 25

### **FITTING INSTRUCTIONS**

- To remove the left side fairing on the bike, remove the six bolts that are arrowed in picture 1.
- Remove the bolt that secures the rear of the infill panel, as arrowed in picture 2.
- Remove the push rivet on the front corner of the infill panel behind the headlights, as arrowed in picture 3.
- The infill panel can now be removed, as shown in picture 4. Repeat the above three stages to remove the fairing bolts and infill panel on the right side of the bike.
- Remove the four push rivets that secure the radiator cowl in place on the left side of the bike, as shown in pictures 5, 6 & 7, before removing the cowl from the bike. Repeat this procedure to remove the right side radiator cowl.

R&G Racing

Unit 1, Shelley's Lane, East Worldham, Alton, Hampshire, GU34 3AQ

Tel: +44 (0)1420 89007 Fax: +44 (0)1420 87301 [www.rg-racing.com](http://www.rg-racing.com) Email: [info@rg-racing.com](mailto:info@rg-racing.com)



- Remove the mirrors from the bike by disconnecting the wiring connector for the indicators and then removing the two nuts that secure the indicator in place, as shown in picture 8.
- Remove the mirror whilst feeding the connector and wiring out from the hole, as shown in picture 9. Repeat for the other side.
- On the right side of the bike, remove the bolt that is arrowed in picture 10.
- Remove the three bolts that secure the right side headlight unit in place, as arrowed in pictures 11, 12 & 13.
- Disconnect the two large white wiring connectors, as shown in pictures 14 & 15.
- The right side headlight unit can now be removed from the bike, as shown in picture 16.
- Repeat the above four stages to remove the left side headlight unit, as shown in picture 17 (there is only one large white connector to disconnect).
- The front fairing can now be removed (this is a little tricky and may require a second person). The fairing is held on by four yellow plastic clip mounts, as shown in pictures 18, 19 & 20. These need to be squeezed together whilst the fairing is gently pulled in order to release from their mounts. The best way to do this is by using long nose pliers or a screwdriver to squeeze the clip from inside the fairing, whilst an assistant gently pulls the fairing from the front in the immediate area around each clip.
- Once removed, access can be gained to the final two fairing bolts. Remove these, as shown on the right side in picture 21.
- The fairings can now be removed, by unclipping towards the front, releasing the yellow clip that is shown in picture 22 and removing from the bike, as shown in picture 23.
- Remove the lower mount radiator bolt as arrowed in Picture 24.
- Offer the new downpipe grille in position with its top mount being aligned with the radiator's lower mount, secure using the OEM bolt and washer. Do not fully tighten the bolt at this stage.
- Clip in downpipe's grille clamp onto the nearest exhaust pipe.
- Loop around a cable tie through the two designated holes located on top corner on either side of the downpipe grille. Finally loop the loose end of the cable tie around the infill panel bracket/ mount as arrowed in Picture 25 and secure in position. Repeat the procedure to the other side.
- Tighten the top mounting bolt to a manufacturer's specified torque setting.
- Ensure that the downpipe grille is correctly fitted.
- Re-fit the headlights, nose fairing, mirrors and infill panels in a reverse procedure of the first 16 steps.
- Check all components are secure and all bolts are tight before riding.

ISSUE 1 18/03/2024 MH

#### **CONSUMER NOTICE**

The catalogue description and any exhibition of samples are only broad indications of the Products and R&G may make design changes which do not diminish their performance or visual appeal and supplying them in such state shall conform to the order. The Buyer acknowledges no representation or warranty (other than as to title) has been given or will apply to the Products other than those in R&G's order or confirmation and the Buyer confirms it has chosen the Products as being of merchantable quality and suitable for its particular purposes. Where R&G fits the Products or undertakes other services it shall exercise reasonable skill and care and rectify any fault free of charge unless the workmanship has been disturbed. The Buyer is responsible for ensuring that the warranty on the motorcycle is not affected by the fitting of the Products. On return of any defective Products R&G shall at its option either supply a replacement or refund the purchase money but shall not be liable if the Products have been modified or used or maintained otherwise than in accordance with R&G's or manufacturer's instructions and good engineering practice or if the defect arises from accident or neglect. Other than identified above and subject to R&G not limiting its liability for causing death and personal injury, it shall not be liable for indirect or consequential loss and otherwise its liability shall be limited to the amounts paid by the Buyer for the Products or the fitting or service concerned. These terms do not affect the Buyer's statutory rights.

#### **R&G RACING RETURNS POLICY (NON-FAULTY GOODS)**

Returns must be pre-authorized (if not pre-authorized the return will be rejected). Goods may only be returned direct to us if they were purchased direct from us (customer must prove if necessary). Otherwise to be returned to original vendor. Goods must be in re-sellable condition, in the opinion of R&G Racing. All returns are subject to a 25% restocking and handling fee (25% of the

R&G Racing

Unit 1, Shelley's Lane, East Worldham, Alton, Hampshire, GU34 3AQ

Tel: +44 (0)1420 89007 Fax: +44 (0)1420 87301 [www.rg-racing.com](http://www.rg-racing.com) Email: [info@rg-racing.com](mailto:info@rg-racing.com)



gross value exc. P&P – at the prevailing price at time of purchase). The customer must pay any and all carriage charges. No returns of discontinued products, unless within 14 days of purchase. This policy does not affect your statutory rights and does not refer to faulty goods.