



FITTING INSTRUCTIONS FOR CP0545BL
AERO CRASH PROTECTORS



THIS KIT CONTAINS THE ITEMS PICTURED AND LABELLED OVER PAGE.

SOME PARTS MAY BE SHOWN FOR CLARITY OF INSTRUCTIONS ONLY.

DO NOT PROCEED UNTIL YOU ARE SURE ALL PARTS ARE PRESENT.

PLEASE READ ALL INSTRUCTIONS BEFORE PROCEEDING.

**IF IN ANY DOUBT WHEN FITTING OUR PRODUCTS, CONSULT ONE OF OUR DEALERS OR
HAVE FITTED BY A QUALIFIED TECHNICIAN.**

PLEASE NOTE THAT THE WAY THE KIT IS PACKED DOES NOT NECESSARILY REPRESENT THE WAY OF
MOUNTING TO THE BIKE.

IN THE EVENT OF RUBBER WASHERS BEING USED TO HOLD COMPONENTS ONTO BOLTS,
THESE RUBBER WASHERS CAN BE THROWN AWAY.

DIGITAL COPIES OF THESE INSTRUCTIONS ARE AVAILABLE TO DOWNLOAD FROM

WWW.RG-RACING.COM

R&G

Unit 1, Shelley's Lane, East Worldham, Alton, Hampshire, GU34 3AQ

Tel: +44 (0)1420 89007 Fax: +44 (0)1420 87301 www.rg-racing.com Email: info@rg-racing.com

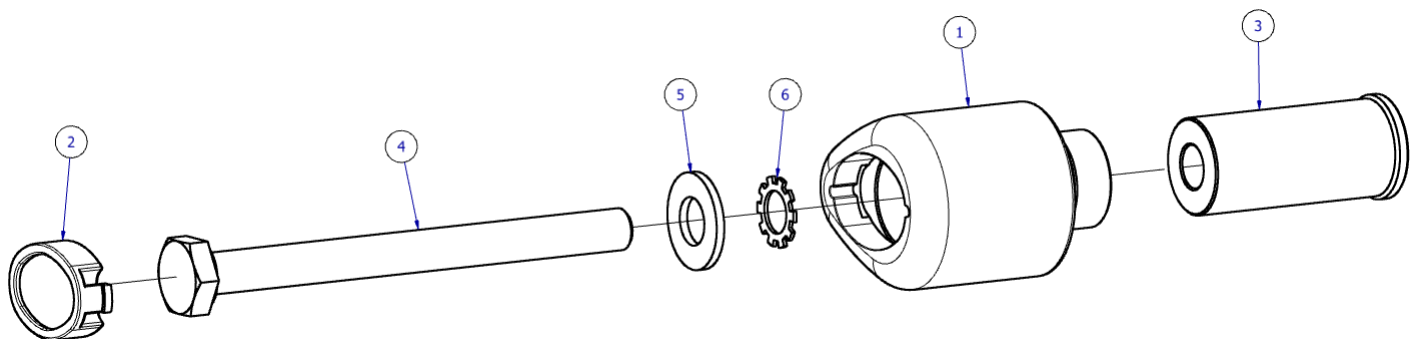


<u>TOOLS REQUIRED</u>	<u>GENERAL TORQUE SETTINGS</u>
<ul style="list-style-type: none"> • T55 TORX BIT • 17mm AND 19mm SOCKET AND EITHER A 3/8" OR 1/2" WRENCH. • TORQUE WRENCH CAPABLE OF 40Nm. • SUITABLE JACK WITH SOFT SUPPORT AREA (TO SUPPORT ENGINE WHILE MOUNTING BOLTS REMOVED). 	<p>M4 BOLT = 8Nm M5 BOLT = 12Nm M6 BOLT = 15Nm M8 BOLT = 20Nm M10 BOLT = 40Nm M12 BOLT = 40Nm</p>

LEGEND

ITEM NO.	DESCRIPTION	QTY
ITEM 1	B0431 WITH CS340 (BOBBIN)	2
ITEM 2	BC0002 (BOBBIN CAP)	2
ITEM 3	S1429 (BOBBIN SPACER)	2
ITEM 4	M12 x 1.50 x 140mm HEX HEAD BOLT (BOBBIN BOLT)	2
ITEM 5	M12 x 25mm OD WASHER	2
ITEM 6	LW0001 (M12 EXTERNAL SHAKEPROOF WASHER)	2

ASSEMBLY DIAGRAM – BOTH SIDES





AERO-STYLE CRASH PROTECTOR ORIENTATION



FITTING PICTURES



Picture 1



Picture 2



FITTING INSTRUCTIONS

PLEASE NOTE THAT BEFORE BEGINNING, YOU WILL NEED A SUITABLE JACK TO SUPPORT THE ENGINE WHEN REMOVING OEM ENGINE BOLTS. IF YOU ARE NOT COMFORTABLE CARRYING OUT THIS PROCEDURE, HAVE FITTED BY A QUALIFIED TECHNICIAN. READ ALL STEPS BEFORE PROCEEDING.

- Place the jack underneath the engine in a central position and apply a light pressure to the underside of the engine **NOT** the exhaust or any other tubing (Please use a semi soft material (rubber/wood etc) as a bumper between the jack support area & the engine to cushion/spread the load which will prevent any damage to the under-side of the engine).
- As shown in **Picture 1** please remove the LHS OEM engine bolt.
- Construct the LHS assembly as shown above in **ASSEMBLY DIAGRAM – BOTH SIDES**.
- Attach the LHS assembly using the M12 x 1.50 x 140mm bolt provided (**Item 4**) tightening to the torque spec noted above.
- As shown in **Picture 2** please remove the RHS OEM engine bolt.
- Construct the RHS assembly as shown above in **ASSEMBLY DIAGRAM – BOTH SIDES**.
- Attach the RHS assembly using the M12 x 1.50 x 140mm bolt provided (**Item 4**), tightening to the torque spec noted above.
- Lastly, please ensure all bolts are correctly tightened before riding the motorcycle.

ISSUE 1 - 12/09/2022 (AO)

CONSUMER NOTICE

The catalogue description and any exhibition of samples are only broad indications of the Products and R&G may make design changes which do not diminish their performance or visual appeal and supplying them in such state shall conform to the order. The Buyer acknowledges no representation or warranty (other than as to title) has been given or will apply to the Products other than those in R&G's order or confirmation and the Buyer confirms it has chosen the Products as being of merchantable quality and suitable for its particular purposes. Where R&G fits the Products or undertakes other services it shall exercise reasonable skill and care and rectify any fault free of charge unless the workmanship has been disturbed. The Buyer is responsible for ensuring that the warranty on the motorcycle is not affected by the fitting of the Products. On return of any defective Products R&G shall at its option either supply a replacement or refund the purchase money but shall not be liable if the Products have been modified or used or maintained otherwise than in accordance with R&G's or manufacturer's instructions and good engineering practice or if the defect arises from accident or neglect. Other than identified above and subject to R&G not limiting its liability for causing death and personal injury, it shall not be liable for indirect or consequential loss and otherwise its liability shall be limited to the amounts paid by the Buyer for the Products or the fitting or service concerned. These terms do not affect the Buyer's statutory rights.

R&G RETURNS POLICY (NON-FAULTY GOODS)

Returns must be pre-authorized (if not pre-authorized the return will be rejected). Goods may only be returned direct to us if they were purchased direct from us (customer must prove if necessary). Otherwise to be returned to original vendor. Goods must be in re-sellable condition, in the opinion of R&G. All returns are subject to a 25% restocking and handling fee (25% of the gross value exc. P&P – at the prevailing price at time of purchase). The customer must pay any and all carriage charges. No returns of discontinued products, unless within 14 days of purchase. This policy does not affect your statutory rights and does not refer to faulty goods.

R&G

Unit 1, Shelley's Lane, East Worldham, Alton, Hampshire, GU34 3AQ

Tel: +44 (0)1420 89007 Fax: +44 (0)1420 87301 www.rg-racing.com Email: info@rg-racing.com



NOTICE DE MONTAGE POUR CP0545BL
PROTECTIONS CRASH



CE KIT CONTIENT LES ARTICLES ILLUSTRÉS ET ÉTIQUETES SUR LA PAGE.

CERTAINES PARTIES PEUVENT ÊTRE PRÉSENTES UNIQUEMENT POUR LA CLARTÉ DES INSTRUCTIONS.

NE PAS PROCÉDER AU MONTAGE TANT QUE VOUS N'ÊTES PAS SÛR QUE TOUTES LES PIÈCES SOIENT PRÉSENTES.

VEUILLEZ LIRE TOUTES LES INSTRUCTIONS AVANT DE CONTINUER.

**EN CAS DE DOUTE LORS DU MONTAGE DE NOS PRODUITS, CONSULTEZ UN DE NOS
REVENDEURS OU FAITES APPEL À UN TECHNICIEN QUALIFIÉ.**

VEUILLEZ NOTER QUE LA FAÇON DONT LE KIT EST EMBALLÉ NE REPRÉSENTE PAS NECESSAIREMENT LA
MANIÈRE DE LE MONTER SUR LA MOTO.

SI DES RONDELLES EN CAOUTCHOUC SONT UTILISÉES POUR MAINTENIR LES COMPOSANTS SUR LES
BOULONS, ELLES PEUVENT ÊTRE JETÉES.

NOTICE DISPONIBLE AU TÉLÉCHARGEMENT SUR :
WWW.RG-RACING.COM

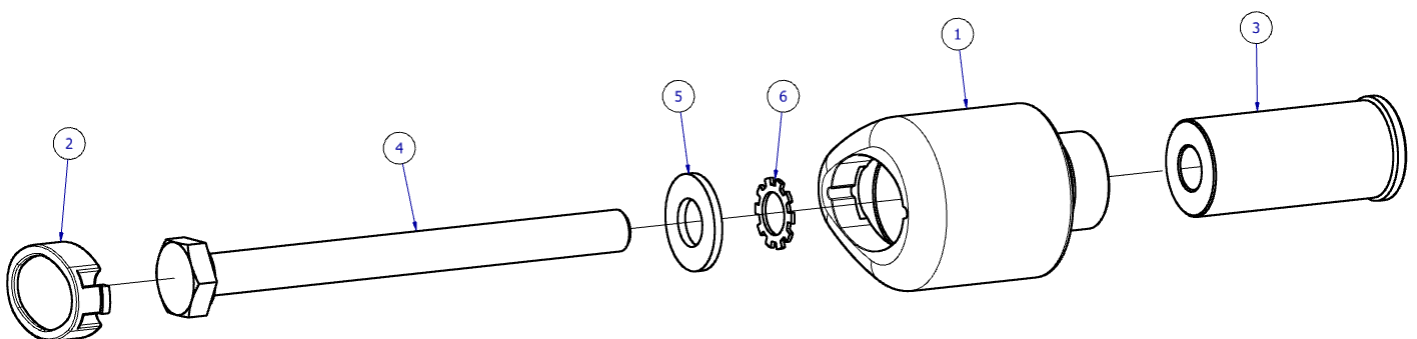


OUTILS REQUIS	VALEURS DE SERRAGE
<ul style="list-style-type: none"> • CLÉ TORX T55 • CLÉ À CLIQUET 17mm ET 19mm À 3/8" OU 1/2" . • CLÉ DYNAMOMÉTRIQUE 40Nm. • PRISE ADAPTÉE POUR SUPPORTER LE MOTEUR LORSQUE LES BOULONS SERONT ENLEVÉS 	M4 BOULON = 8Nm M5 BOULON = 12Nm M6 BOULON = 15Nm M8 BOULON = 20Nm M10 BOULON = 40Nm M12 BOULON = 40Nm

LÉGENDE

ARTICLE NO.	DESCRIPTION	QTÉ
ARTICLE 1	B0431 AVEC CS340 (PROTECTION)	2
ARTICLE 2	BC0002 (CAPUCHON DE PROTECTION)	2
ARTICLE 3	S1429 (ENTRETOISE DE PROTECTION)	2
ARTICLE 4	M12 x 1.50 x 140mm BOULON (BOULON DE PROTECTION)	2
ARTICLE 5	M12 x 25mm OD RONDELLE	2
ARTICLE 6	LW0001 (M12 RONDELLE ANTI VIBRATION EXTERNE)	2

SCHÉMA D'ASSEMBLAGE – DES 2 CÔTÉS



R&G

Unit 1, Shelley's Lane, East Worldham, Alton, Hampshire, GU34 3AQ

Tel: +44 (0)1420 89007 Fax: +44 (0)1420 87301 www.rg-racing.com Email: info@rg-racing.com



ORIENTATION DE LA PROTECTION CRASH



PHOTOS DE MONTAGE



Photo 1



Photo 2



NOTICE DE MONTAGE

VEUILLEZ NOTER QU'AVANT DE COMMENCER, VOUS AUREZ BESOIN D'UN CRIC APPROPRIÉ POUR SOUTENIR LE MOTEUR LORS DU DÉMONTAGE DES BOULONS DE MOTEUR D'ORIGINE. SI VOUS N'ÊTES PAS À L'AISE, FAITES L'INSTALLATION PAR UN TECHNICIEN QUALIFIÉ. LISEZ TOUTES LES ÉTAPES AVANT DE CONTINUER.

- Placez le cric sous le moteur dans une position centrale et appliquez une légère pression sur le dessous du moteur MAIS PAS sur l'échappement ou tout autre tube (veuillez utiliser un matériau semi-souple (caoutchouc/bois, etc.) comme pare-chocs entre la zone de support du cric & le moteur pour amortir/répartir la charge ce qui évitera tout dommage au-dessous du moteur).
- Comme indiqué sur la photo 1, veuillez retirer le boulon du moteur d'origine côté gauche.
- Construisez l'assemblage côté gauche comme indiqué ci-dessus sur le SCHÉMA D'ASSEMBLAGE – DES DEUX CÔTÉS.
- Fixez l'ensemble du côté gauche à l'aide du boulon M12 x 1,50 x 140 mm fourni (article 4) en serrant au couple indiqué ci-dessus.
- Comme indiqué sur la photo 2, veuillez retirer le boulon du moteur d'origine côté droit.
- Construisez l'assemblage côté droit comme indiqué ci-dessus sur le SCHÉMA D'ASSEMBLAGE – DES DEUX CÔTÉS.
- Fixez l'ensemble côté droit à l'aide du boulon M12 x 1,50 x 140 mm fourni (article 4), en serrant au couple indiqué ci-dessus.
- Enfin, assurez-vous que tous les boulons soient correctement serrés avant de conduire la moto.

ISSUE 1 - 12/09/2022 (AO)

CONSUMER NOTICE

The catalogue description and any exhibition of samples are only broad indications of the Products and R&G may make design changes which do not diminish their performance or visual appeal and supplying them in such state shall conform to the order. The Buyer acknowledges no representation or warranty (other than as to title) has been given or will apply to the Products other than those in R&G's order or confirmation and the Buyer confirms it has chosen the Products as being of merchantable quality and suitable for its particular purposes. Where R&G fits the Products or undertakes other services it shall exercise reasonable skill and care and rectify any fault free of charge unless the workmanship has been disturbed. The Buyer is responsible for ensuring that the warranty on the motorcycle is not affected by the fitting of the Products. On return of any defective Products R&G shall at its option either supply a replacement or refund the purchase money but shall not be liable if the Products have been modified or used or maintained otherwise than in accordance with R&G's or manufacturer's instructions and good engineering practice or if the defect arises from accident or neglect. Other than identified above and subject to R&G not limiting its liability for causing death and personal injury, it shall not be liable for indirect or consequential loss and otherwise its liability shall be limited to the amounts paid by the Buyer for the Products or the fitting or service concerned. These terms do not affect the Buyer's statutory rights.

R&G RETURNS POLICY (NON-FAULTY GOODS)

Returns must be pre-authorized (if not pre-authorized the return will be rejected). Goods may only be returned direct to us if they were purchased direct from us (customer must prove if necessary). Otherwise to be returned to original vendor. Goods must be in re-sellable condition, in the opinion of R&G. All returns are subject to a 25% restocking and handling fee (25% of the gross value exc. P&P – at the prevailing price at time of purchase). The customer must pay any and all carriage charges. No returns of discontinued products, unless within 14 days of purchase. This policy does not affect your statutory rights and does not refer to faulty goods.

R&G

Unit 1, Shelley's Lane, East Worldham, Alton, Hampshire, GU34 3AQ

Tel: +44 (0)1420 89007 Fax: +44 (0)1420 87301 www.rg-racing.com Email: info@rg-racing.com



MONTAGEANLEITUNG FÜR CP0545BL
AERO STURZPADS



ALLE KIT-TEILE SIND AUF DEN NACHFOLGENDEN SEITEN ABGEBILDET UND GEKENNZEICHNET.

DIE ABGEBILDETEN TEILE DIENEN LEDIGLICH ZUR ERKLÄRUNG.

ÜBERPRÜFEN SIE ZUERST, DASS ALLE TEILE VORHANDEN SIND.

LESEN SIE DIE MONTAGEANLEITUNG KOMPLETT DURCH, BEVOR SIE ANFANGEN.

**WENN SIE BEI DER MONTAGE DIESES PRODUKTES UNSICHER SIND, BITTE EINEN
UNSERER HÄNDLER KONTAKTIEREN ODER DAS KIT VON EINEM QUALIFIZIERTEN
ZWEIRAD-MECHANIKER MONTIEREN LASSEN.**

DIE VERPACKUNG DER TEILE STELLT NICHT DIE REIHENFOLGE DER MONTAGE DAR.

HINWEIS FÜR KITS MIT PLASTIKUNTERLEGSCHLEIBEN AN DEN SCHRAUBEN –
DIESE PLASTIK-UNTERLEGSCHLEIBEN WERDEN NICHT FÜR DEN EINBAU BENÖTIGT.

**EINE DIGITALE VERSION DIESER MONTAGEANLEITUNG KANN AUF FOLGENDER SEITE
HERUNTERGELADEN WERDEN:**

WWW.RG-RACING.COM

R&G

Unit 1, Shelley's Lane, East Worldham, Alton, Hampshire, GU34 3AQ

Tel: +44 (0)1420 89007 Fax: +44 (0)1420 87301 www.rg-racing.com Email: info@rg-racing.com

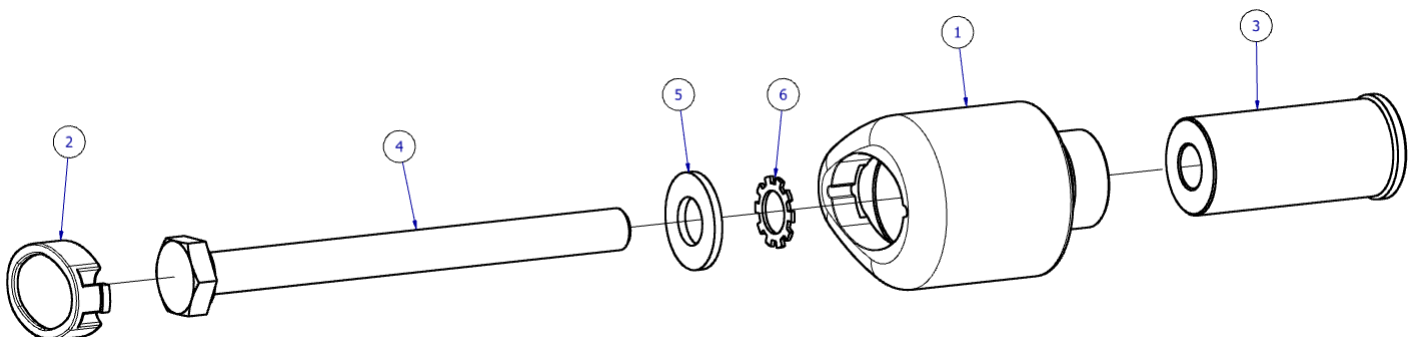


SIE BENÖTIGEN FOLGENDES WERKZEUG	ALLGEM. ANZUGSDREHMOMENT
<ul style="list-style-type: none"> • T55 TORX-EINSATZ • 17mm & 19mm STECKSCHLÜSSEL und 3/8" ODER 1/2" SCHRAUBENSCHLÜSSEL • DREHMOMENTSCHLÜSSEL BIS 40Nm • PASSENDEN MOTORRADHEBER MIT WEICHEM STÜTZBEREICH (UM DEN MOTOR ZU STÜTZEN WÄHREND DER ENTFERUNG DER MOTOR-SCHRAUBEN) 	<p>M4 SCHRAUBE = 8Nm M5 SCHRAUBE = 12Nm M6 SCHRAUBE = 15Nm M8 SCHRAUBE = 20Nm M10 SCHRAUBE = 40Nm M12 SCHRAUBE = 40Nm</p>

LIEFERUMFANG

ARTIKEL NR.	BESCHREIBUNG	MENGE
ARTIKEL 1	B0431 MIT CS340 (STURZPAD)	2
ARTIKEL 2	BC0002 (STURZPAD-KAPPE)	2
ARTIKEL 3	S1429 (DISTANZHALTER STURZPAD)	2
ARTIKEL 4	M12 x 1.50 x 140mm SECHSKANTSCHRAUBE (SCHRAUBE STURZPAD)	2
ARTIKEL 5	M12 x 25mm UNTERLEGSCHIEBE	2
ARTIKEL 6	LW0001 (M12 EXT. ZAHNSCHIEBE)	2

ZEICHNUNG ZUSAMMENBAU – BEIDE SEITEN



R&G

Unit 1, Shelley's Lane, East Worldham, Alton, Hampshire, GU34 3AQ

Tel: +44 (0)1420 89007 Fax: +44 (0)1420 87301 www.rg-racing.com Email: info@rg-racing.com



AERO-STYLE STURZPADS ORIENTIERUNG



MONTAGE ABBILDUNGEN



Abbildung 1



Abbildung 2



MONTAGEANLEITUNG

HINWEIS: BEVOR SIE ANFANGEN, BENÖTIGEN SIE EINEN GEEIGNETEN HEBER, UM DEN MOTOR WÄHREND DER ENTFERNUNG DER SCHRAUBEN AM MOTOR ZU STÜTZEN. WENN SIE UNSICHER SIND, LASSEN SIE DAS KIT VON EINEM QUALIFIZIERTEN ZWEIRAD-MECHANIKER MONTIEREN. LESEN SIE DIE KOMPLETTE ANLEITUNG DURCH, BEVOR SIE MIT DER MONTAGE BEGINNEN.

- Einen passenden Motorradheber oder Montageständer mittig unter den Motor stellen und etwas Druck an der Unterseite des Motors anwenden **NICHT** am Auspuff oder am Rohr (bitte ein mittelweiches Material (Holz / Kunststoff usw.) als Puffer zwischen dem Stützbereich des Hebers und dem Motor benutzen, um es zu federn/das Gewicht zu verteilen und eventuelle Beschädigungen an der Unterseite des Motors zu verhindern).
- Wie in **Abbildung 1** abgebildet, entfernen Sie die Originalschraube an der linken Seite des Motors.
- Die Einheit für die linke Seite zusammenbauen wie oben abgebildet (**ZEICHNUNG ZUSAMMENBAU – BEIDE SEITEN**).
- Die Einheit an der linken Seite mit der M12 x 1.50 x 140mm Schraube vom Kit fixieren (**Artikel 4**) und mit dem oben angegebenen Anzugsdrehmoment befestigen.
- Wie in **Abbildung 2** abgebildet, entfernen Sie die Originalschraube am Motor für die rechte Seite.
- Die Einheit für die rechte Seite zusammenbauen wie oben abgebildet (**ZEICHNUNG ZUSAMMENBAU – BEIDE SEITEN**).
- Die Einheit an der rechten Seite mit der M12 x 1.50 x 140mm Schraube vom Kit fixieren (**Artikel 4**) und mit dem oben angegebenen Anzugsdrehmoment befestigen.
- Anschließend überprüfen Sie, dass alle Schrauben ordnungsgemäß festgezogen sind, bevor Sie mit dem Motorrad fahren.

AUSGABE 1 - 12/09/2022 (AO)

CONSUMER NOTICE

The catalogue description and any exhibition of samples are only broad indications of the Products and R&G may make design changes which do not diminish their performance or visual appeal and supplying them in such state shall conform to the order. The Buyer acknowledges no representation or warranty (other than as to title) has been given or will apply to the Products other than those in R&G's order or confirmation and the Buyer confirms it has chosen the Products as being of merchantable quality and suitable for its particular purposes. Where R&G fits the Products or undertakes other services it shall exercise reasonable skill and care and rectify any fault free of charge unless the workmanship has been disturbed. The Buyer is responsible for ensuring that the warranty on the motorcycle is not affected by the fitting of the Products. On return of any defective Products R&G shall at its option either supply a replacement or refund the purchase money but shall not be liable if the Products have been modified or used or maintained otherwise than in accordance with R&G's or manufacturer's instructions and good engineering practice or if the defect arises from accident or neglect. Other than identified above and subject to R&G not limiting its liability for causing death and personal injury, it shall not be liable for indirect or consequential loss and otherwise its liability shall be limited to the amounts paid by the Buyer for the Products or the fitting or service concerned. These terms do not affect the Buyer's statutory rights.

R&G

Unit 1, Shelley's Lane, East Worldham, Alton, Hampshire, GU34 3AQ

Tel: +44 (0)1420 89007 Fax: +44 (0)1420 87301 www.rg-racing.com Email: info@rg-racing.com

**R&G RETURNS POLICY (NON-FAULTY GOODS)**

Returns must be pre-authorized (if not pre-authorized the return will be rejected). Goods may only be returned direct to us if they were purchased direct from us (customer must prove if necessary). Otherwise to be returned to original vendor. Goods must be in re-sellable condition, in the opinion of R&G. All returns are subject to a 25% restocking and handling fee (25% of the gross value exc. P&P – at the prevailing price at time of purchase). The customer must pay any and all carriage charges. No returns of discontinued products, unless within 14 days of purchase. This policy does not affect your statutory rights and does not refer to faulty goods.

R&G

Unit 1, Shelley's Lane, East Worldham, Alton, Hampshire, GU34 3AQ

Tel: +44 (0)1420 89007 Fax: +44 (0)1420 87301 www.rg-racing.com Email: info@rg-racing.com